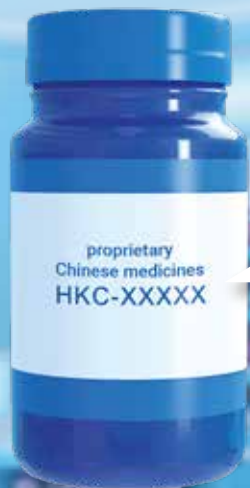





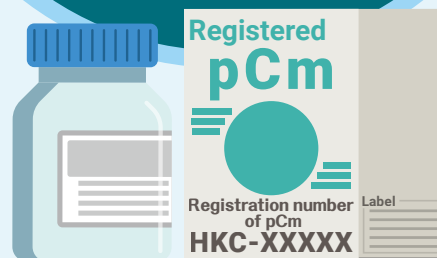
Points to note when purchasing proprietary Chinese medicines



proprietary
Chinese medicines
HKC-XXXXX

What are proprietary Chinese medicines (pCm)?

-  pCm generally refers to proprietary product composed solely of materials of Chinese medicines as active ingredients;
-  formulated in a finished dose form; and
-  known or claimed to be used for the diagnosis, treatment, prevention or alleviation of any disease or any symptom of a disease in human beings, or for the regulation of the functional states of the human body.



The registration system for pCm is a regulatory measure established according to the Chinese Medicine Ordinance, with the aim of ensuring the **safety, quality and efficacy** of pCm.

According to Section 119 of the Chinese Medicine Ordinance

All pCm must be registered before they can be sold, imported or possessed in Hong Kong.

Any person who sells, imports or possesses unregistered pCm commits an offence, including pCm sold online, imported from overseas, or purchased by members of the public while travelling abroad and brought back into Hong Kong.

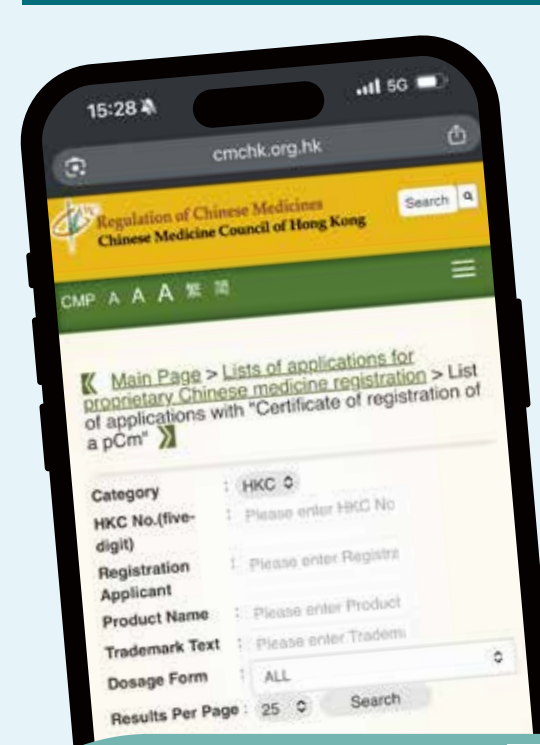
All registered pCm in Hong Kong has met the following registration requirements :

-  Safety
-  Quality
-  Efficacy

Registration number of pCm

The package of pCm must be labelled with its registration number. Members of the public are advised to take note of this when purchasing pCm.

The registration number is in the format of **HKC-XXXXX**, consisting of the letters HKC followed by five digits.



Department of Health

Visit the website of the Chinese Medicine Council of Hong Kong
<http://www.cmchk.org.hk>
for information on registered pCm.





Consult Chinese Medicine Practitioner first

The use of Chinese medicines should be tailored to the individual's constitution, cause of disease and medical conditions. Members of the public should seek professional advice from **Chinese Medicine Practitioners (CMPs)** before purchasing pCm, to ensure the pCm and treatment are appropriate for their needs. For example, curative pCm are generally not suitable for long-term use.



Individual's constitution



Cause of disease



Medical conditions

When the need arises, you should :

1 Collect Information :

Collect information about the brand before purchasing. Do not be credulous of exaggerated or false claims.



2 Choose Retailer :

Shop from reputable retailers. Do not purchase pCm from unknown sources.



3 Pay attention to product information before purchasing

- Name of medicine
- Name of the manufacturer or registration holder
- Registration number
- Active ingredients
- Batch number
- Expiry date

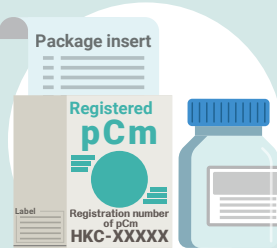


The public are advised to use pCm safely according to the instructions of qualified CMPs or the directions on the package insert.

If in doubt, consult a health care professional.

Label and package insert of pCm

Sections 143 and 144 of the Chinese Medicine Ordinance



Registered pCm should be **labelled in the prescribed manner**, and with a **package insert** that complies with the prescribed requirements.

The container or package of a registered pCm must be properly labelled, and the product must be supplied with a package insert.

Contents of label

- Name of medicine
- Name of active ingredients
- Country of origin
- Registration number
- Name of registration holder
- Packing specification
- Dosage and method of usage
- Expiry date
- Batch number



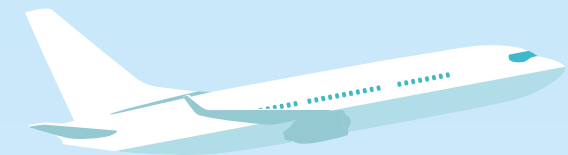
Contents of package insert

- Name of medicine
- Name and quantity of active ingredients
- Dosage and method of usage
- Functions/pharmacological action
- Name of registration holder/manufacturer
- Indications (if any)
- Contraindications, side effects/toxic effects (if any)
- Precautions (if any)
- Storage instructions
- Packing specification



Purchasing pCm online

- Do not be credulous of exaggerated or false claims on the Internet
- Choose registered pCm to ensure the quality, safety, and efficacy of the pCm



Purchasing pCm while traveling abroad

- You should first consult a qualified healthcare professional if you experience any discomfort while traveling abroad
- When purchasing pCm, it is advisable to follow the instructions of a qualified CMP
- Do not be credulous of exaggerated or false claims
- Shop from reputable retailers. Do not purchase pCm from unknown sources
- The public should not import or possess unregistered pCm upon returning to Hong Kong - it is an offence
- The public should not consume any unregistered pCm or pCm from unknown sources
- The public should check whether the pCm have been registered

