

Macroscopic and Microscopic Identification of Cortex type of  
Decoction Pieces Commonly Found in Hong Kong



**Jasmini Giraldii Cortex**

**Source** The dried root bark of *Jasminus floridum* Bunge subsp. *giraldii* (Diels) Miao in the family Oleaceae

**Property and Flavour** Warm; bitter

**Actions** To transform stasis and alleviate pain

**Production Area** Mainly produced in Shaanxi, Ganshu, Henan, etc.

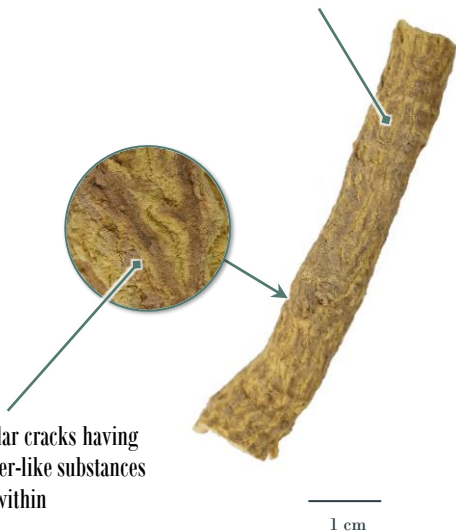




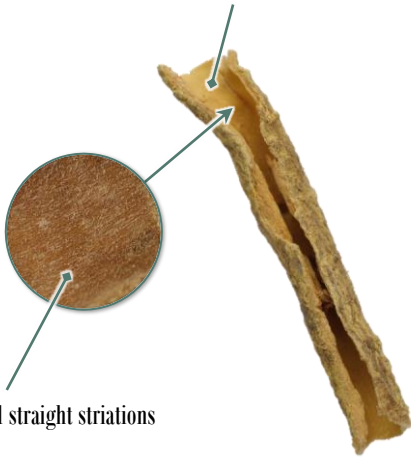
## Macroscopic Identification Features

**Shape** Quilled or slightly curled slices, varies in size

Cork on the outer surface is brown or yellowish-brown, hard in texture and not easily exfoliated. No lenticels



Inner surface is yellow, light brown or deep brown



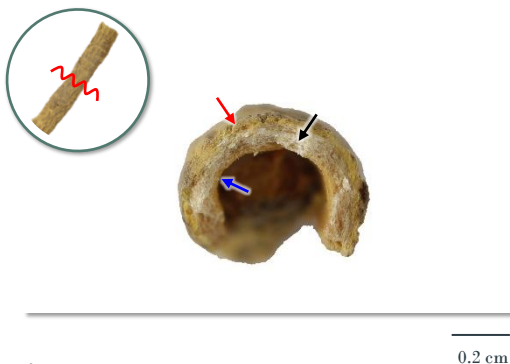
With fine and straight striations

1 cm



**Texture** Hard and fragile, easily broken

**Fracture** Frequently found to be in several layers. Outer layer (→) is usually yellow. Middle layer (→) is usually light brown or greyish-white. Inner layer (→) is usually brown. Granular



**Odour** Strong

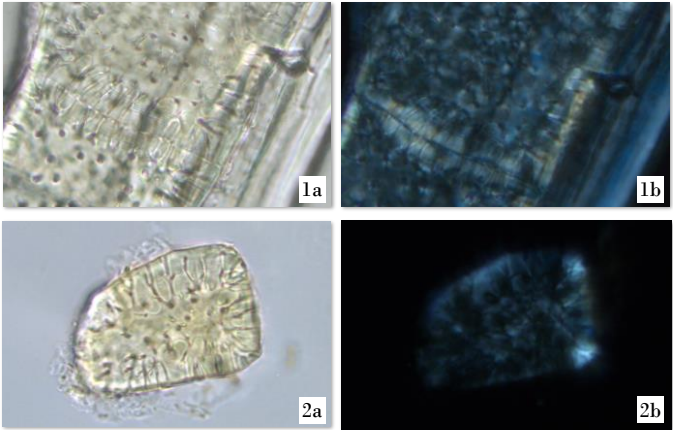
0.2 cm



# Feature of Simplified Powder Microscopic Identification

## - Sclerenchyma -

### Stone cell



50  $\mu\text{m}$

Frequently found, usually present in groups (1), occasionally singly scattered (2), appears sub-rounded, sub-rectangular, sub-polygonal or irregular, wall is thick or extremely thick, distinct pit canals and pits. Some adhere to fibre; bright white or polychromatic under polarized light microscope

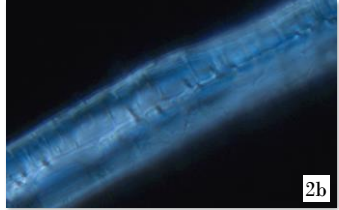
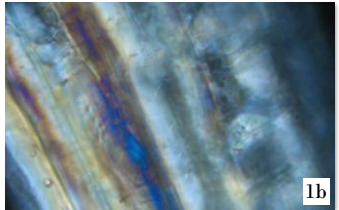
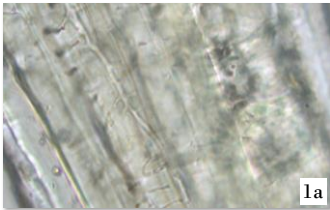
*a. features under bright field; b. features under polarized light*



# Additional Features of Powder Microscopic Identification

## - Sclerenchyma -

### Fibre



50  $\mu$ m

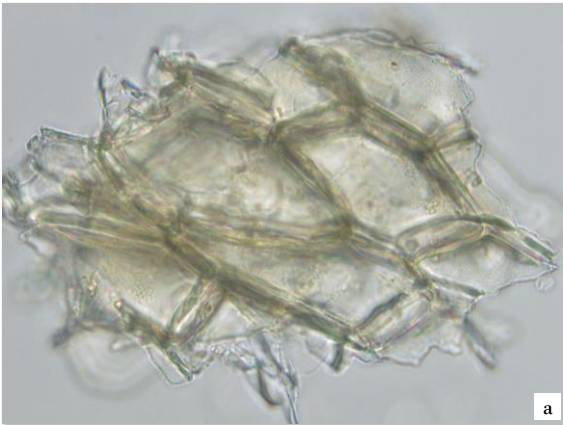
In bundles (1) or singly scattered (2), wall is extremely thick, some with sparse pit canals. Some adhere to stone cell; bright white or polychromatic under polarized light microscope

a. features under bright field; b. features under polarized light



- Protective tissue -

Cork cell



50  $\mu$ m

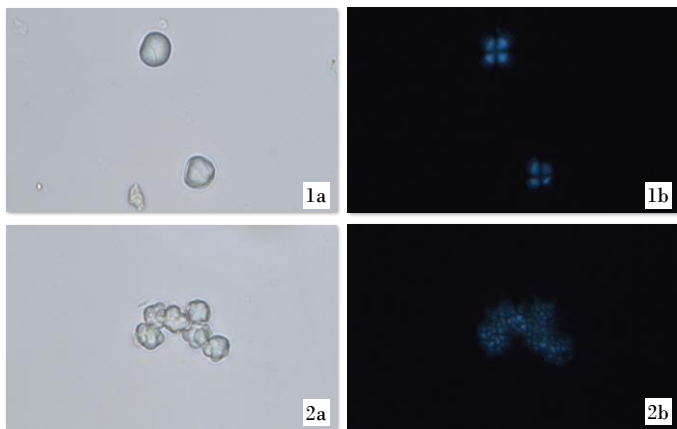
Colourless or light yellowish-brown, appears sub-rounded or sub-polygonal in surface view

*a. features under bright field; b. features under polarized light*



- Starch -

Starch granule



50 μm

Barely found, simple granule (1) appears sub-rounded, some with distinct dotted hilum; compound granule (2) consists of 2-4 units; black and cruciate-shaped under polarized light microscope

a. features under bright field; b. features under polarized light





## Key Identification Features

### - Macroscopic features -

- ◇ Cork on the outer surface is brown or yellowish-brown and has irregular cracks having yellow powder-like substances within
- ◇ Fracture is frequently found to be in several layers. Outer layer is usually yellow. Middle layer is usually light brown or greyish-white. Inner layer is usually brown. Granular

### - Powder microscopic feature -

- ◇ Stone cell is frequently found, usually present in groups and occasionally singly scattered, wall is thick or extremely thick with distinct pit canals and pits. Some adhere to fibre

Government Chinese Medicines Testing Institute

Department of Health

Enquiry hotline: 2509 5809

Website: [www.cmro.gov.hk](http://www.cmro.gov.hk)

The information in this pamphlet may be re-disseminated or reproduced, provided that the Government Chinese Medicines Testing Institute (GCMTI), as the source of information, is acknowledged and that the re-dissemination or reproduction is for non-commercial use. Any reproduction, adaptation, distribution, dissemination or making available of the information in this pamphlet for commercial use is strictly prohibited unless prior written authorisation is obtained from the GCMTI.