

Caulis Sinomenii versus Herba Paederiae



Source

*Caulis Sinomenii

is the dried stem of
Sinomenium acutum (Thunb.) Rehd. et Wils. or
S. acutum (Thunb.) Rehd. et Wils. var. *cinereum* Rehd. et Wils.
in the family Menispermaceae

Herba Paederiae

is the dried whole part of
Paederia scandens (Lour.) Merr.
in the family Rubiaceae

Overview

Both the Caulis Sinomenii and Herba Paederiae are listed in Schedule 2 of the Chinese Medicine Ordinance, whilst the former is also listed in the Chinese Pharmacopoeia (2020). According to the *Zhong yao cai pin zhong lun shu*, there are many different species found under the commodity name “*Qing feng teng*”. In general, plant sources in most areas of China are *Sinomenium acutum* and *S. acutum* var. *cinereum* in the family Menispermaceae, but the plant source commonly found in Fujian is *Paederia scandens* in the family Rubiaceae. According to the Chinese Pharmacopoeia, the functions of Caulis Sinomenii are dispelling wind-dampness, unblock the meridians and collaterals, and promote diuresis. As stated in *Zhong hua ben cao*, the functions of Herba Paederiae are dispelling wind and eliminating dampness, resolve accumulation and promote digestion, detoxifying and dispersing swelling, activating blood and relieving pain. Due to the differences in functions of the two Chinese Materia Medica, they should be used accordingly.

Note:

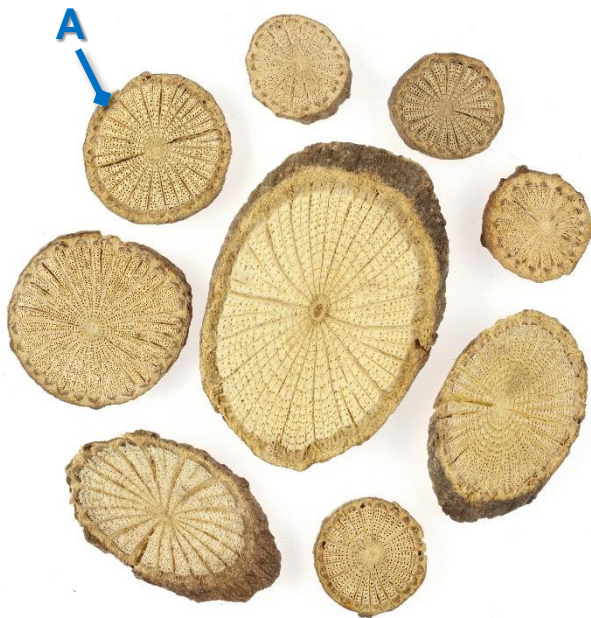
*Its name in the Chinese Pharmacopoeia (2020) is “Sinomenii Caulis”.

Key identification features

Macroscopic features of Caulis Sinomenii decoction pieces



◆ Flat slices



1 cm

◆ Slight odour



Surface is greenish-brown or brown and some with longitudinal wrinkles



Sub-rounded or sub-elliptical cut surface

Narrow bark

Yellowish-white or whitish pith

Wood is yellowish-white, dark yellowish-white or light brown and has distinct radial striations

In between the striations, numerous holes are observed, which are mostly annularly arranged and sometimes with dark red substance

1 cm

Micro-morphological features

A1: Bark is yellowish-brown. Phloem(→) is observable in deeper colour and crescentic or semi-circular in shape

A2: Without exposed fibres



(Cut surface)

1 mm

Macroscopic features of Herba Paederiae decoction pieces



- ◆ Irregular sections, mainly lianoid stem, mostly appear flattened cylindrical and slightly twisted



1 cm

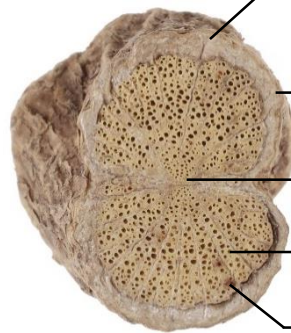
- ◆ Characteristic odour



Surface is greyish-brown, light greyish-brown or deep brown and has longitudinal wrinkles

Appears dark red at the exfoliated area of the periderm

1 cm



Centre of both sides of the cut surface is frequently dented inward which appears slightly in the shape of figure "8"

Narrow bark

Pith is light brownish-white while a few is dark red. Some are indistinct

Wood is yellowish-white or whitish and has less distinct radial striations

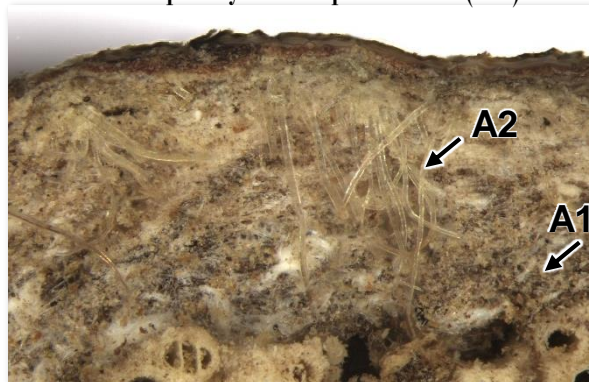
In between the striations, numerous holes are observed, and sometimes with dark red substance

5 mm

Micro-morphological features

A1: Bark is light brown or dark brown. Some phloems(→) are in deeper colour and arranged in connected ring

A2: Frequently with exposed fibres(→)

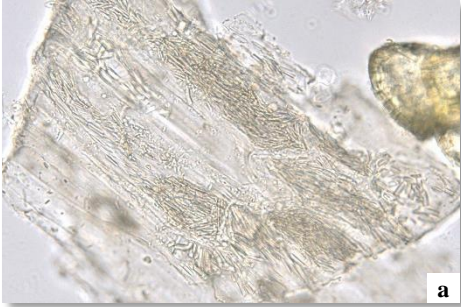
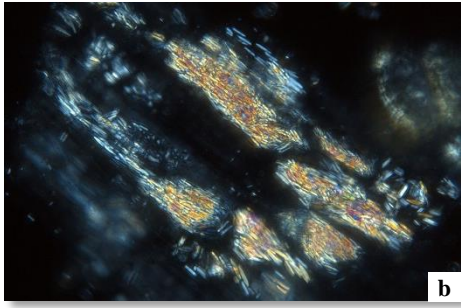

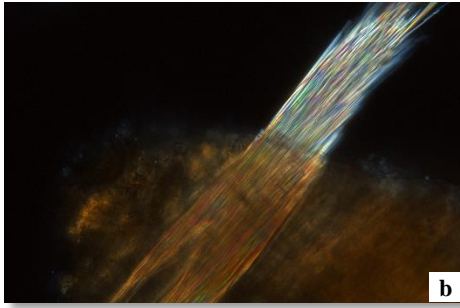


(Cut surface)

200 μm

Microscopic feature comparison of
Caulis Sinomenii decoction pieces and
Herba Paederiae decoction pieces powder



	Caulis Sinomenii decoction pieces	Herba Paederiae decoction pieces
Raphide of calcium oxalate	<div> <p>Numerous, relatively short, scattered or present in cell; bright white or polychromatic under the polarized light microscope</p></div>	<div> <p>Numerous, relatively long, scattered or present in bundles in cell; bright white or polychromatic under the polarized light microscope</p></div>

a. features under bright field; b. features under polarized light

50 μm

Summary

Major differences in the features between Caulis Sinomenii decoction pieces and Herba Paederiae decoction pieces :

		Caulis Sinomenii decoction pieces	Herba Paederiae decoction pieces
Macroscopic and micro-morphological features	Cut surface	Sub-rounded or sub-elliptical	Appears slightly in the shape of figure “8”
	Odour	Slight	Characteristic
	Cut surface of bark	Without exposed fibres	Frequently with exposed fibres
Microscopic feature	Raphide of calcium oxalate	Relatively short	Relatively long



Government Chinese Medicines Testing Institute
Department of Health
Enquiry Hotline: 3188 8079
Website: www.cmro.gov.hk

The information in this pamphlet may be re-disseminated or reproduced, provided that the Government Chinese Medicines Testing Institute (GCMTI), as the source of information, is acknowledged and that the re-dissemination or reproduction is for non-commercial use. Any other reproduction, adaptation, distribution, dissemination or making available of the information in this pamphlet for commercial use is strictly prohibited unless prior written authorization is obtained from the GCMTI.