

# Pollen Typhae versus Pollen Pini



## Source

**\*Pollen Typhae**  
is the dried pollen of  
*Typha angustifolia* L.,  
*T. orientalis* Presl or  
plants of the same genus  
in the family Typhaceae

**Pollen Pini<sup>#</sup>**  
is the dried pollen of  
*Pinus massoniana* Lamb.,  
*P. tabulaeformis* Carr. or  
plants of the same genus  
in the family Pinaceae

## Overview

Pollen Typhae and Pollen Pini are listed in both Schedule 2 of the Chinese Medicine Ordinance and Chinese Pharmacopoeia (2020). According to *Zhong hua ben cao*, Pollen Typhae had been recorded since *Shen nong ben cao jing* as the yellow pollen on flowers of *Typha* genus; while Pollen Pini had been record since *Xin xiu ben cao*. “Pollen Pini is called ‘*Song huang*’, similar to Pollen Typhae when swept with fingers”. This shows that the ancients have long believed that there are similarities between the appearances of the two Chinese Materia Medica. According to the Chinese Pharmacopoeia, Pollen Typhae can stop bleeding, resolve stasis and relieve strangury; while Pollen Pini has astringent hemostatic properties and dry dampness and heal wound. Despite both are yellow pollens, there are variations in the source and efficacy and thus should be used accordingly.

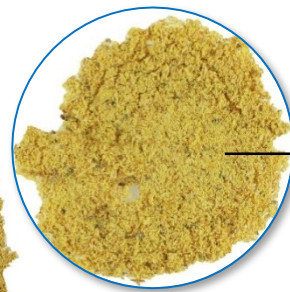
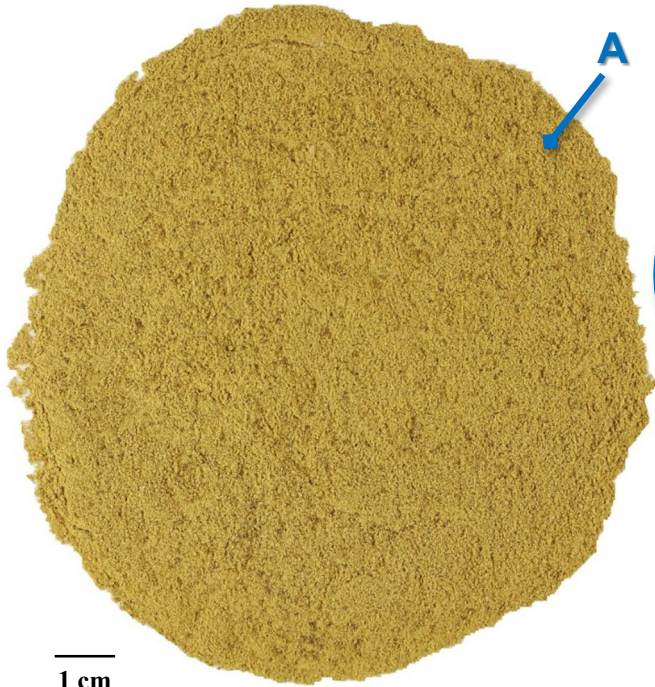
Note:

\*Its name in Chinese Pharmacopoeia (2020) is “Typhae Pollen”.

<sup>#</sup>Its name in the Chinese Pharmacopoeia (2020) is “Pini Pollen”.

## Key identification features

### Macroscopic features of Pollen Typhae

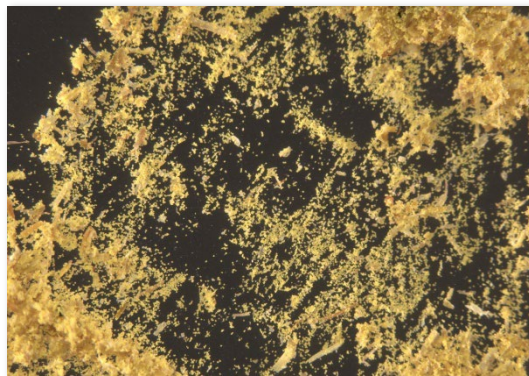


Yellow powder

◆ Light, satiny when rubbed and easily adsorbed on fingers

### Micro-morphological feature

A: Mainly yellow spherical pollen grains, relatively small



(Overall)

500 μm

## Macroscopic features of Pollen Pini

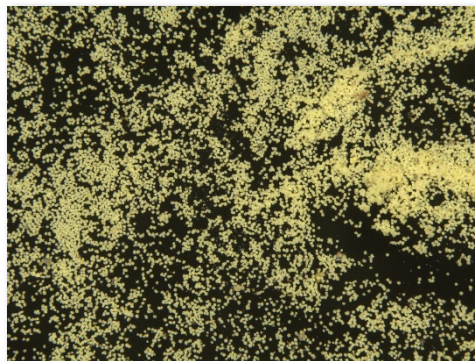


Light yellow powder

- ◆ Light, extremely easily wafted, satiny when rubbed and easily adsorbed on fingers

### Micro-morphological feature

A: Mainly light yellow spherical or sub-reniform pollen grains, relatively large




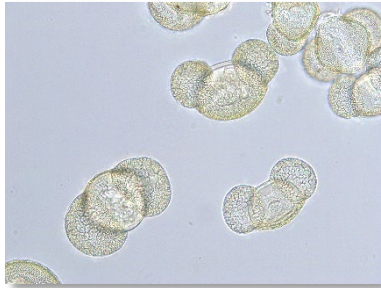
(Overall)

500  $\mu$ m



**Microscopic feature comparison of  
Pollen Typhae and Pollen Pini powder**



	<b>Pollen Typhae</b>	<b>Pollen Pini</b>
<b>Pollen grain</b>	 <p>Sub-rounded or elliptical, with reticulate striations on the exine, single pore, indistinct</p>	 <p>Consists of corpus and 2 sacci. Elliptical or sub-rounded corpus with fine and dense granular striations on the exine; saccus occasionally broken, intact saccus appears sub-reniform and with distinct reticulate striations on the exine</p>

50  $\mu$ m

## Summary

### Major differences in the features between Pollen Typhae and Pollen Pini:

		Pollen Typhae	Pollen Pini
Macroscopic and micro-morphological features	Texture	Light	Light, extremely easily wafted
	Overall	Mainly yellow spherical pollen grain, relatively small	Mainly light yellow spherical or sub-reniform pollen grain, relatively large
Microscopic feature	Pollen grain	Without sacci	With sacci



Government Chinese Medicines Testing Institute  
 Department of Health  
 Enquiry Hotline: 3188 8079  
 Website: www.cmro.gov.hk

*The information in this pamphlet may be re-disseminated or reproduced, provided that the Government Chinese Medicines Testing Institute (GCMTI), as the source of information, is acknowledged and that the re-dissemination or reproduction is for non-commercial use. Any other reproduction, adaptation, distribution, dissemination or making available of the information in this pamphlet for commercial use is strictly prohibited unless prior written authorization is obtained from the GCMTI.*