

# Herba Lophatheri versus Folium Phyllostachydis Henonis



## Source

**\*Herba Lophatheri**  
is the dried stem and leaf of  
*Lophatherum gracile* Brongn.  
in the family Gramineae

**Folium Phyllostachydis Henonis**  
is the dried leaf of  
*Phyllostachys nigra* (Lodd.ex Lindl.) Munro  
var. *henonis* (Mitf.) Stapf ex Rendle (etc)  
in the family Gramineae

## Overview

Herba Lophatheri is listed in Schedule 2 of the Chinese Medicine Ordinance and the Chinese Pharmacopoeia (2020); Folium Phyllostachydis Henonis on the other hand has not been listed in either references. These two Chinese Materia Medica (CMM) are often confused due to similarity between the names of the CMM and the source plant. According to the Chinese Pharmacopoeia, Herba Lophatheri can clear heat and purge fire, relieve agitation and relieve thirst, and promote diuresis to relieve strangury. On the other hand, *Zhong hua ben cao* stated that Folium Phyllostachydis Henonis has heat clearing and agitation relieving, fluid engendering and strangury relieving properties. As these two CMM differ in the source and functions, they should be used accordingly.

Note:

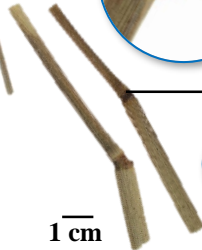
\*Its name in the Chinese Pharmacopoeia (2020) is “Lophatheri Herba”.

## Key identification features

### Macroscopic features of Herba Lophatheri decoction pieces

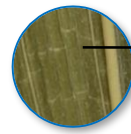


- ◆ Mostly in irregular sections, blade usually shriveled and curved



Blade has acuminate or acute apex

Intact blade appears lanceolate and has light green or yellowish-green upper surface when flattened



Parallel vein with horizontal veinlets forming rectangular reticulate striations, and is particularly distinct at the lower surface

With lighter colour at the lower surface

Attenuate base in stalk-like



Cylindrical stem has node and light yellowish-green surface

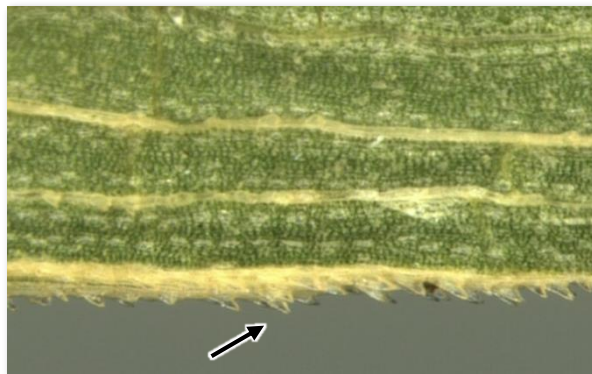
Hollow in fracture

1 cm

1 cm

### Micro-morphological feature

A: Serrulate on both sides



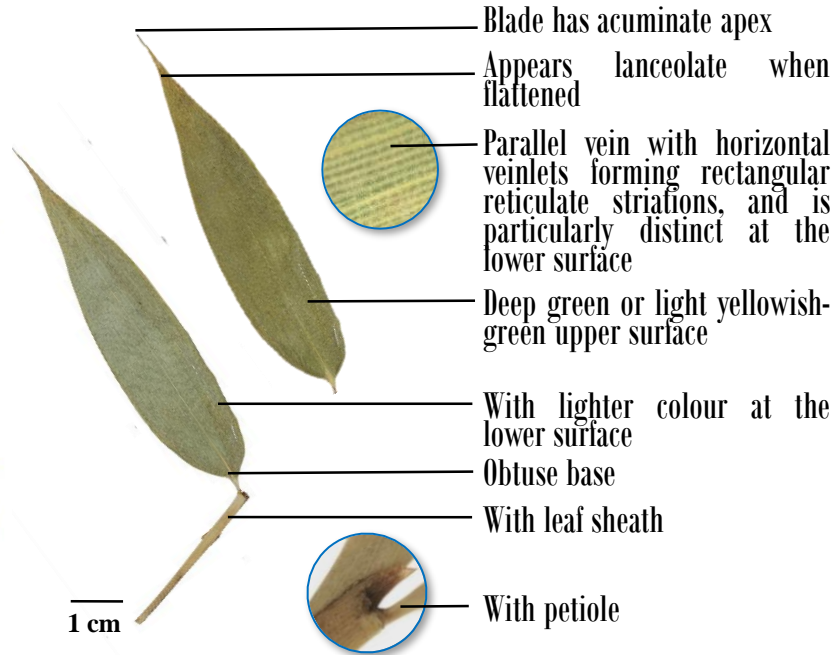
(Leaf margin)

0.1 mm

## Macroscopic features of Folium Phyllostachydis Henonis

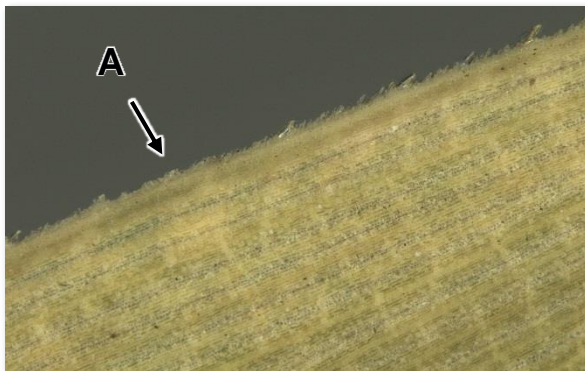


◆ Blade is mostly intact and usually shriveled and curved



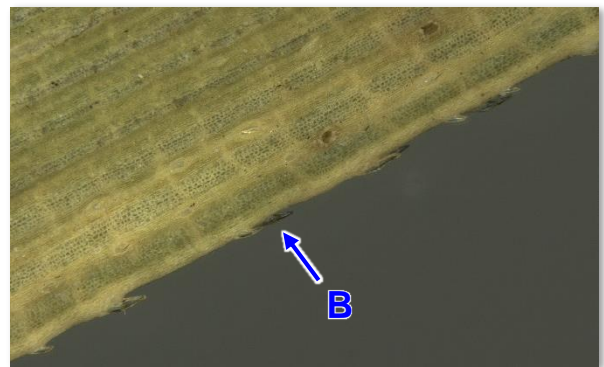
### Micro-morphological features

A, B: Serrulate on both sides. One side is denser(→), while the other side is sparser(←)



(Leaf margin)

0.5 mm

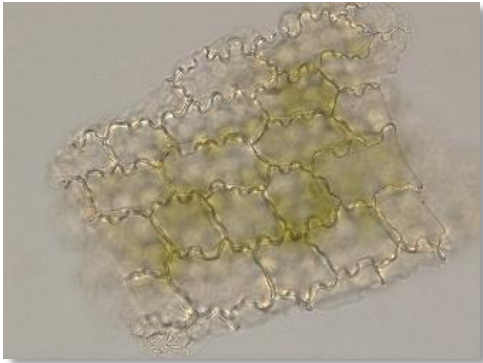
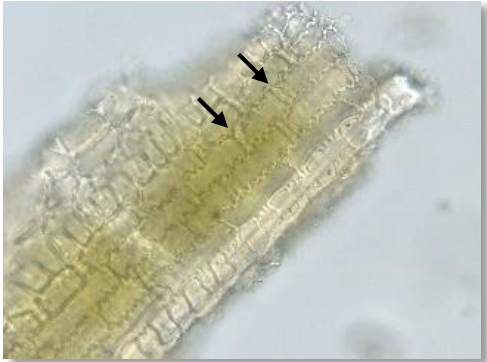
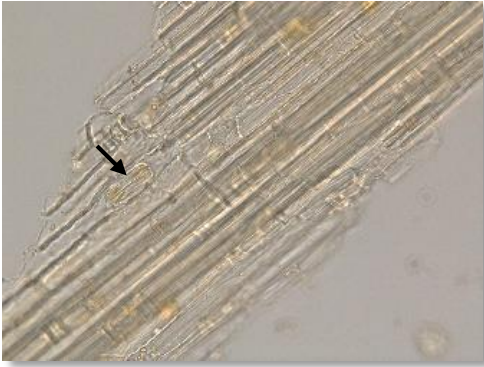



(Leaf margin)

0.5 mm

**Microscopic feature comparison of Herba Lophatheri decoction pieces and Folium Phyllostachydis Henonis powder**



	<b>Herba Lophatheri decoction pieces</b>	<b>Folium Phyllostachydis Henonis</b>
<b>Upper epidermal cell of leaf</b>	 <p>Sub-rectangular or sub-square, thin and sinuous anticlinal wall</p>	 <p>Long cell appears long strip-shaped, sinuous anticlinal wall, with short cell (→) in between</p>
<b>Epidermal cell of stem</b>	 <p>Appears long sub-rectangular, stomata (→) occasionally found</p>	 <p>Absent</p>

50 μm

## Summary

Major differences in the features between Herba Lophatheri decoction pieces and Folium Phyllostachydis Henonis :

		Herba Lophatheri decoction pieces	Folium Phyllostachydis Henonis
Macroscopic and micro-morphological features	Stem	Present	Absent
	Petiole	Absent	Present
	Leaf margin	Serrulate on both sides	Serrulate on both sides. One side is denser, while the other side is sparser
Microscopic features	Upper epidermal cell of leaf	Sub-rectangular or sub-square	Long cell appears long strip-shaped, with short cell in between
	Epidermal cell of stem	Present	Absent

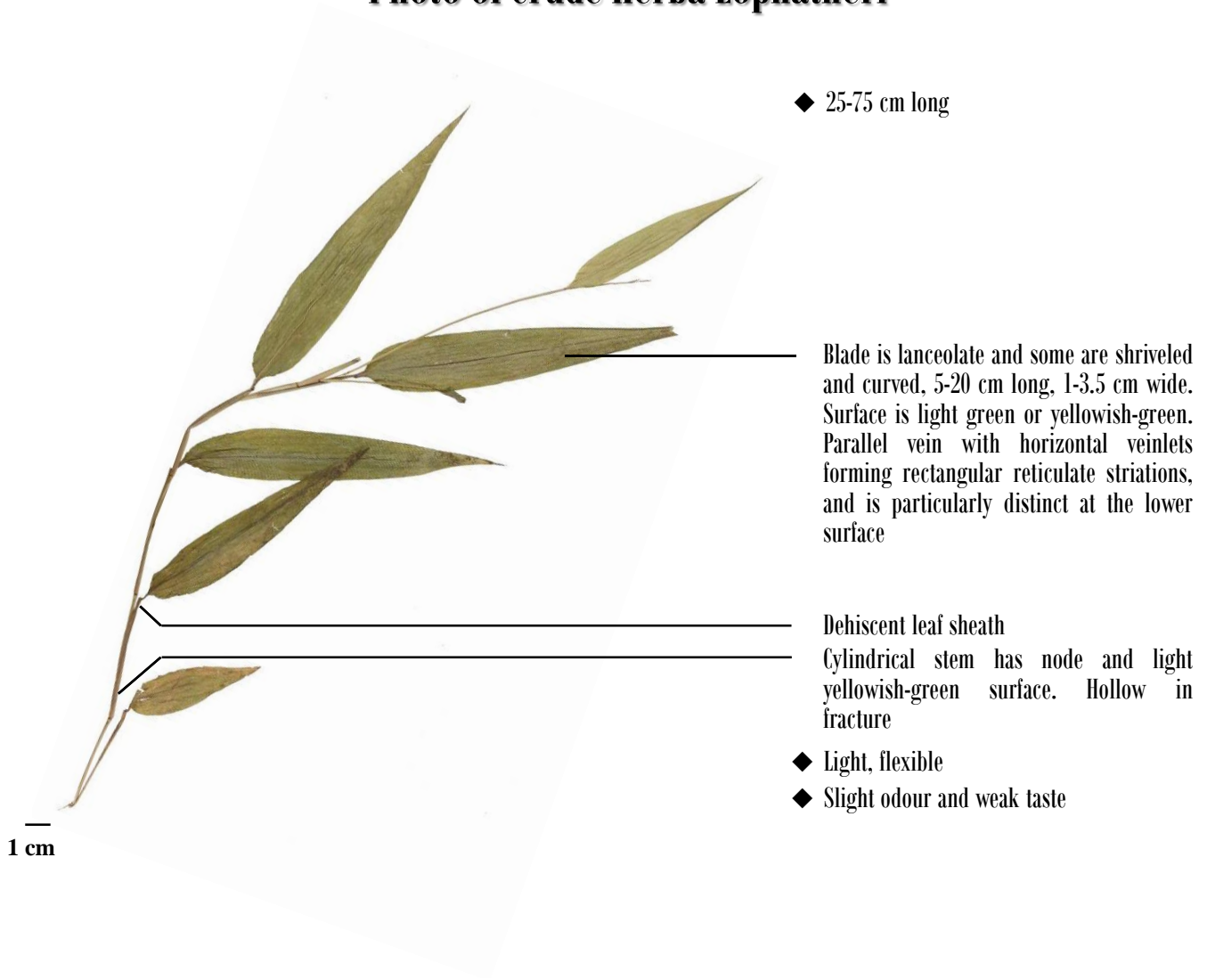
For more information, please refer to the [Hong Kong Chinese Materia Medica Standards website](#):



Lophatheri Herba - Hong Kong Chinese Materia Medica Standards (Volume 5)

## Additional information

### Photo of crude Herba Lophatheri



◆ 25-75 cm long

Blade is lanceolate and some are shriveled and curved, 5-20 cm long, 1-3.5 cm wide. Surface is light green or yellowish-green. Parallel vein with horizontal veinlets forming rectangular reticulate striations, and is particularly distinct at the lower surface

Dehiscent leaf sheath

Cylindrical stem has node and light yellowish-green surface. Hollow in fracture

◆ Light, flexible

◆ Slight odour and weak taste



Government Chinese Medicines Testing Institute  
Department of Health  
Enquiry Hotline: 3188 8079  
Website: [www.cmro.gov.hk](http://www.cmro.gov.hk)

*The information in this pamphlet may be re-disseminated or reproduced, provided that the Government Chinese Medicines Testing Institute (GCMTI), as the source of information, is acknowledged and that the re-dissemination or reproduction is for non-commercial use. Any other reproduction, adaptation, distribution, dissemination or making available of the information in this pamphlet for commercial use is strictly prohibited unless prior written authorization is obtained from the GCMTI.*