

Rhizoma Acori Tatarinowii versus Rhizoma Anemones Altaicae



Source

***Rhizoma Acori Tatarinowii**
is the dried rhizome of
Acorus tatarinowii Schott
in the family Araceae

Rhizoma Anemones Altaicae
is the dried rhizome of
Anemone altaica Fisch. ex C. A. Mey
in the family Ranunculaceae

Overview

The Chinese Materia Medica (CMM), Rhizoma Acori Tatarinowii, is listed in both Schedule 2 of the Chinese Medicine Ordinance and the Chinese Pharmacopoeia (2020). On the other hand, Rhizoma Anemones Altaicae is only listed in Schedule 2 of the Chinese Medicine Ordinance. According to the research by *Species Systematization and Quality Evaluation of Commonly Used Chinese Traditional Drugs*, the description of “not less than 9 nodes in 1 inch” refers to Rhizoma Acori Tatarinowii or plants belonging to the same genus. In fact, “*Jiu jie chang pu*” was the simplified CMM name used in prescription at that time. Confusion has arisen when recent literatures and some early editions of the Chinese Pharmacopoeia listed *Anemone altaica* in the name of Rhizoma Anemones Altaicae (*Jiu jie chang pu*). According to *Zhong hua ben cao*, both CMM can resolve phlegm to open the orifices. Rhizoma Acori Tatarinowii can disperse swelling to relieve pain, while Rhizoma Anemones Altaicae can diffuse dampness and enliven the spleen. Due to different functions, these two CMM should be used accordingly.

Note:

*Its name in the Chinese Pharmacopoeia (2020) is “Acori Tatarinowii Rhizoma”.

Key identification features

Macroscopic features of Rhizoma Acori Tatarinowii decoction pieces



- ◆ Long strip-shaped longitudinal slices, some with branches observable



Epidermis is deep brown or greyish-brown and rough

Some with uneven annulate nodes observable and with fine longitudinal striations



With rootlets remained or rounded root scars

Some with hairy and scaly remnants of leaf observable

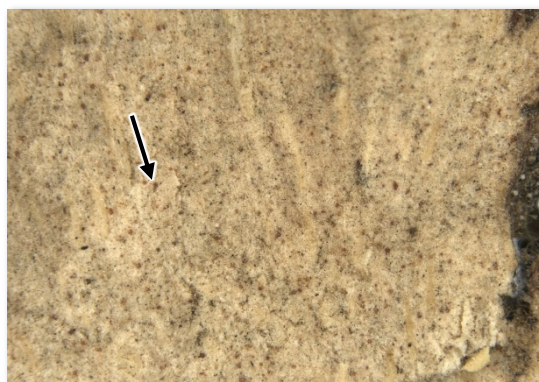


Fibrous, whitish or light brown in the cut surface, some with oil spots observable

1 cm

Micro-morphological feature

A: Densely distributed with brown oil spots



(Cut surface)

1 mm

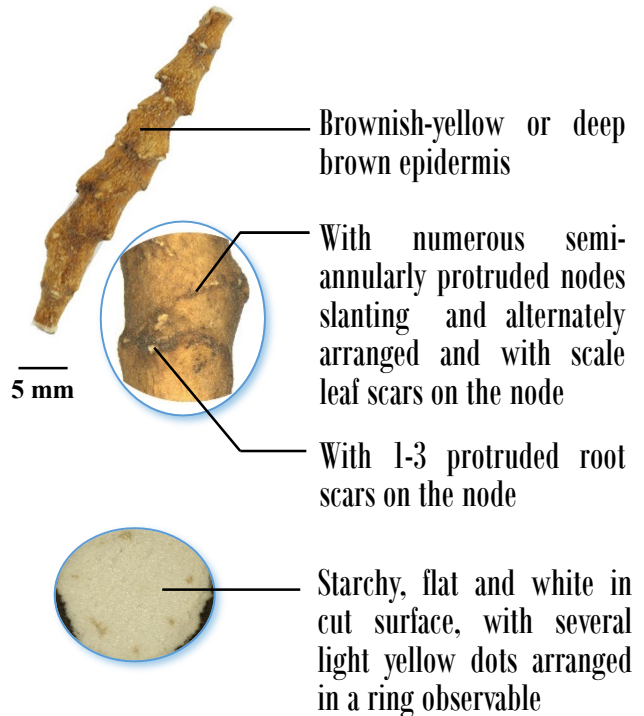
Macroscopic features of Rhizoma Anemones Altaicae



◆ Long fusiform, slightly curved



1 cm



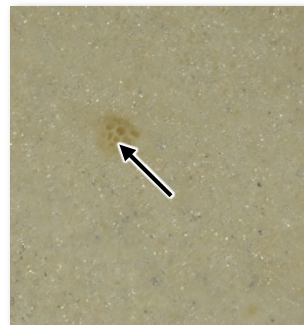
Micro-morphological features

A: With light yellow dotted vascular bundles intermittently arranged in a ring



(Cut surface)

1 mm

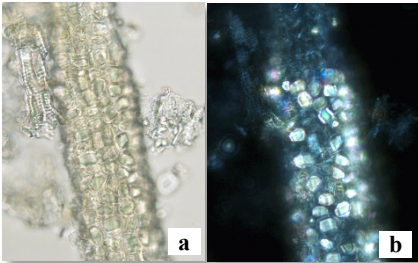

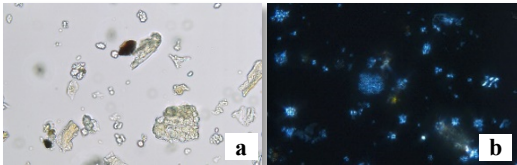
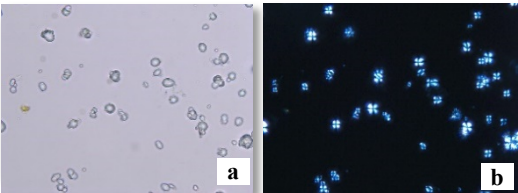




(Enlargement of
the cut surface)

0.5 mm

Microscopic feature comparison of Rhizoma Acori Tatarinowii decoction pieces and Rhizoma Anemones Altaicae powder



	Rhizoma Acori Tatarinowii decoction pieces	Rhizoma Anemones Altaicae
Crystal fibre	<div></div> <p>Crystal fibre is formed as a result of fibre bundle surrounded by cells which contain prisms of calcium oxalate; polychromatic under the polarized light microscope</p>	<div></div> <p>Absent</p>
Starch granule	<div></div> <p>Compound granule frequently found, consists of 2-20 (or more) units</p>	<div></div> <p>Mainly simple granule, compound granule barely found, consists of 2-3 units</p>
Secretory cell	<div></div> <p>Sub-rounded or oblong, lumen filled with orange-yellow or yellowish-brown secretions</p>	<div></div> <p>Absent</p>

a. features under bright field; b. features under polarized light

50 μm

Summary

Major differences in the features between Rhizoma Acori Tatarinowii decoction pieces and Rhizoma Anemones Altaicae:

		Rhizoma Acori Tatarinowii decoction pieces	Rhizoma Anemones Altaicae
Macroscopic and micro-morphological features	Shape	Long strip-shaped longitudinal slices	Long fusiform
	Surface	Deep brown or greyish- brown	Brownish-yellow or deep brown
	Cut surface	Densely distributed with brown oil spots	With light yellow dotted vascular bundles intermittently arranged in a ring
Microscopic features	Crystal fibre	Present	Absent
	Starch granule	Mostly compound granule	Mostly simple granule
	Secretory cell	Present	Absent

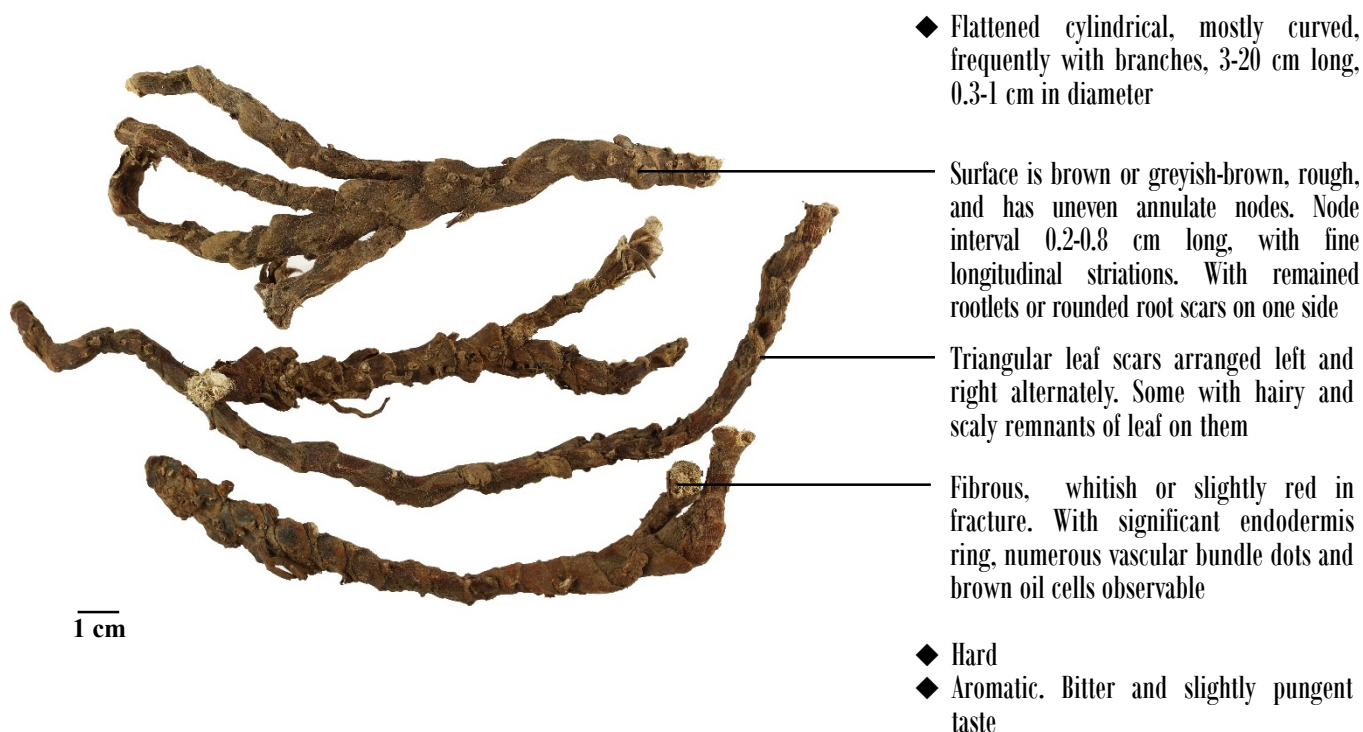
For more information, please refer to the [Hong Kong Chinese Materia Medica Standards website](#):



Acori Tatarinowii Rhizoma - Hong Kong Chinese Materia Medica Standards (Volume 5)

Additional information

Photo of crude Rhizoma Acori Tatarinowii



Government Chinese Medicines Testing Institute
Department of Health
Enquiry Hotline: 3188 8079
Website: www.cmro.gov.hk

The information in this pamphlet may be re-disseminated or reproduced, provided that the Government Chinese Medicines Testing Institute (GCMTI), as the source of information, is acknowledged and that the re-dissemination or reproduction is for non-commercial use. Any other reproduction, adaptation, distribution, dissemination or making available of the information in this pamphlet for commercial use is strictly prohibited unless prior written authorization is obtained from the GCMTI.