

Hedyotidis Diffusae Herba versus Herba Hedyotidis Corymbosae



Source

Hedyotidis Diffusae Herba
is the dried whole part of
Hedyotis diffusa Willd.
in the family Rubiaceae

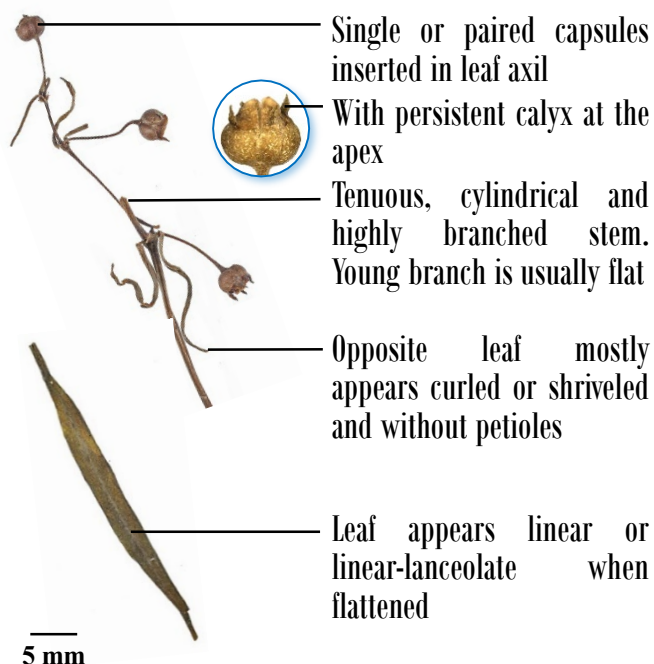
Herba Hedyotidis Corymbosae
is the dried whole part of
Hedyotis corymbosa (L.) Lam.
in the family Rubiaceae

Overview

Herba Hedyotidis Corymbosae is listed under Schedule 2 of the Chinese Medicine Ordinance. Neither Hedyotidis Diffusae Herba nor Herba Hedyotidis Corymbosae is listed in the Chinese Pharmacopoeia (2020). According to the *Species Systematization and Quality Evaluation of Commonly Used Chinese Traditional Drugs*, Hedyotidis Diffusae Herba is named “Bai hua she she cao” as its leaves look similar to a snake’s tongue. Herba Hedyotidis Corymbosae, belonging to the same genus as Hedyotidis Diffusae Herba, also has a similar appearance. Hedyotidis Diffusae Herba is mainly produced in the southeast coast of China and is widely used throughout China. On the other hand, Herba Hedyotidis Corymbosae is mainly produced in Guangdong, Guangxi and Fujian, and is mainly used in the Guangdong and Guangxi. According to the *Chinese Materia Medica Standards in Guangdong Province*, both Chinese Materia Medica (CMM) can clear heat and detoxify, while Hedyotidis Diffusae Herba can further disperse abscesses and nodules, as well as being water-draining and swelling-dispersing. Since the functions of these two CMM slightly differ, they should be used distinctly.

Key identification features

Macroscopic features of Hedyotidis Diffusae Herba decoction pieces



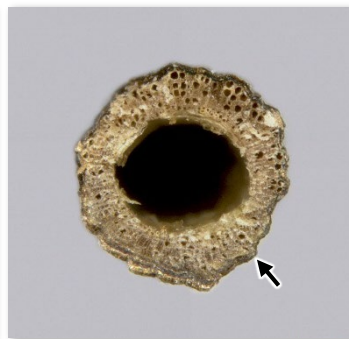
Micro-morphological feature

A: With fine longitudinal ridges



(Surface of the stem)

0.5 mm



(Transverse section of the stem)

200 μ m

Macroscopic features of Herba Hedyotidis Corymbosae decoction pieces



1 cm



5 mm

Capsules with tenuous fruit stalks are arranged in corymbiform shape in groups of 2-5 and are inserted in leaf axil

With persistent calyx at the apex

Tenuous, slightly tetragonal and highly branched stem. Young branch is usually flat

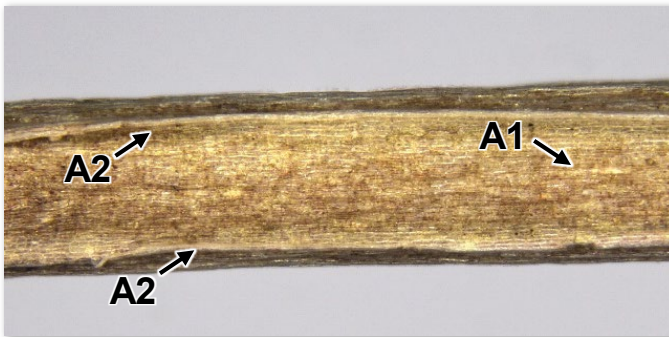
Opposite leaf mostly appears curled or shriveled leaves and without petioles

Leaf appears linear or lanceolate when flattened

Micro-morphological features

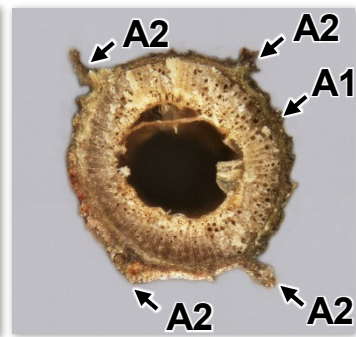
A1: With fine longitudinal ridges

A2: With 1 significant longitudinal ridge each at the 4 angles



(Surface of the stem)

0.5 mm







(Transverse section of the stem)

200 μ m

Microscopic feature comparison of Hedyotidis Diffusae Herba decoction pieces and Herba Hedyotidis Corymbosae decoction pieces powder



	Hedyotidis Diffusae Herba decoction pieces	Herba Hedyotidis Corymbosae decoction pieces
Epidermal cell of testa	 <p>Yellowish-brown to reddish brown, polygonal or sub-polygonal in surface view, anticlinal wall mostly straight, with fine and dense pits on the surface</p>	 <p>Yellowish-brown to light brown, irregular or sub-polygonal in surface view, anticlinal wall mostly sinuous, without pits on the surface</p>
Septal cell of fruit	 <p>Light yellow to light brown, sub-polygonal or polygonal in surface view, cell near to the margin slightly papillarily-protruded</p>	 <p>Colourless to light yellow, strip-shaped in surface view, cell near to the margin slightly papillarily-protruded</p>

50 μm

Summary

Major differences in the features between Hedyotidis Diffusae Herba decoction pieces and Herba Hedyotidis Corymbosae decoction pieces:

		Hedyotidis Diffusae Herba decoction pieces	Herba Hedyotidis Corymbosae decoction pieces
Macroscopic and micro-morphological features	Capsule	Single or paired	Arranged in corymbiform shape in groups of 2-5
	Stem	Only with fine longitudinal ridges	With fine longitudinal ridges and 4 significant longitudinal ridges
Microscopic features	Epidermal cell of testa	With fine and dense pits on the surface	Without pits on the surface
	Septal cell of fruit	Sub-polygonal or polygonal	Strip-shaped

For more information, please refer to the [Hong Kong Chinese Materia Medica Standards website](#):



Hedyotidis Diffusae Herba - Hong Kong Chinese Materia Medica Standards (Volume 9)

Additional information

Photo of crude Hedyotidis Diffusae Herba



- ◆ All twisted into greyish-green to greyish-brown masses
- ◆ Main root is slender, about 2 mm in diameter. Rootlet is tenuous and light greyish-brown
- ◆ Stem is fine, curled, fragile, easily broken and has white pith in the centre
- ◆ Leaf mostly shriveled, broken and easily fallen off; stipule 1-2 mm long
- ◆ Single or paired axillary flower and fruit. Flower usually has short and slightly thick pedicel. Capsule is oblate, 2-2.5 mm in diameter and loculicidal. Persistent calyx is 4-lobed at the upper part and has short and sharp hairs at the margin
- ◆ Slight odour and weak taste

1 cm

Photo of crude Herba Hedyotidis Corymbosae



- ◆ Mostly shriveled to masses
- ◆ Capsule is spherical and has smooth apex, persistent sepals and small and numerous seeds
- ◆ Opposite leaf is mostly shriveled. Intact leaf appears linear-lanceolate or linear when flattened, 1.5-3 cm long, 1.5-3.5 mm wide and has rough margin which usually curled towards the back side. Surface is deep greyish-green. Stipule is small, connate, membranous and without stalks or with short stalk
- ◆ Tetragonal stem is mostly branched, 15-50 cm long, fragile and easily broken
- ◆ Axillary inflorescence is mostly arranged in corymb with 2-5 flowers and occasionally solitary
- ◆ Slight odour and slightly bitter taste

1 cm



Government Chinese Medicines Testing Institute
Department of Health
Enquiry Hotline: 3188 8079
Website: www.cmro.gov.hk

The information in this pamphlet may be re-disseminated or reproduced, provided that the Government Chinese Medicines Testing Institute (GCMTI), as the source of information, is acknowledged and that the re-dissemination or reproduction is for non-commercial use. Any other reproduction, adaptation, distribution, dissemination or making available of the information in this pamphlet for commercial use is strictly prohibited unless prior written authorization is obtained from the GCMTI.