



**Identification of
Tiny Seed and Fruit
Types of Chinese
Materia Medica**

Fructus Broussonetiae*

1 cm

Source

The dried ripe fruit of *Broussonetia papyrifera* (L.) Vent. in the family Moraceae

Property and flavour

Cold; sweet

Meridian affinity

Liver and kidney meridians

Actions

To tonify the kidney and clear the liver; to brighten the eyes; to promote urination

Note:

* Its name in Chinese Pharmacopoeia (2020 Edition) is “Broussonetiae Fructus”.

Micro-morphological features

Shape

Appears sub-rounded in surface view

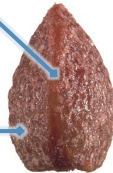


Surface view

With ridge on one side

Slightly flat or with groove on another side

Appears sub-ovate in lateral view, slightly flat



Lateral view

1 mm

Usually with a protuberance between the ridge and the groove



Groove stretches from one side to the base, sometimes with remnant of gynophore

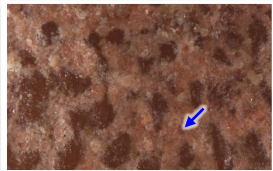
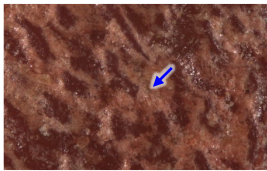
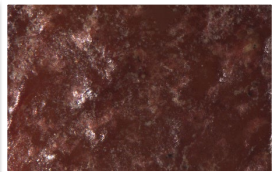
After being soaked in water, usually has diffusion of light orange pigment

Surface view

1 mm

Surface

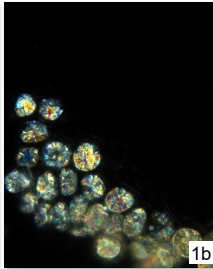
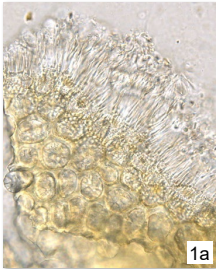
Reddish-brown or brown, with granular protuberances, sometimes with lighter coloured part (→) between the protuberances



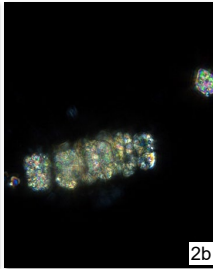
0.2 mm

Powder microscopic features

Crystal

Cluster of calcium oxalate

Numerous, sub-rounded, sub-elliptical (1) or sub-rectangular (2), with small angle and obtuse apex, usually present in crystalliferous sclerenchymatous cell or scattered; polychromatic or orange-yellow under polarized light microscope

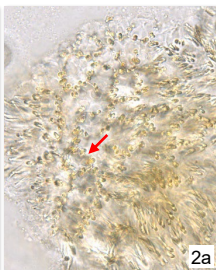
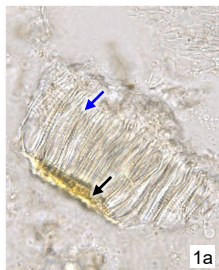


a. features under bright field; b. features under polarized light

50 μ m

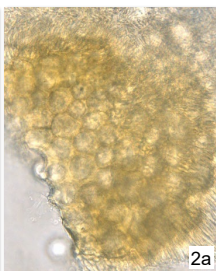
Pericarp

Palisade cell of pericarp



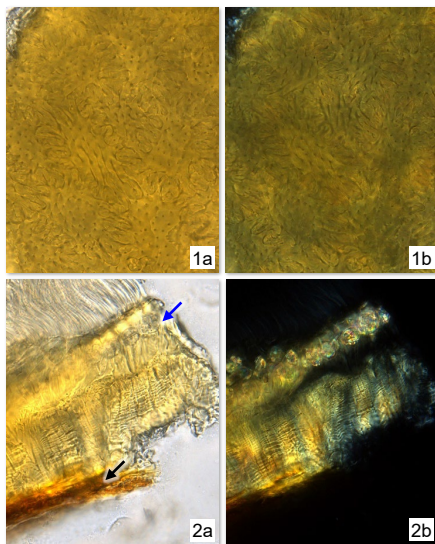
Colourless or light yellow, appears sub-rectangular in lateral view (1), with abundant, uneven and long strip-shaped thickening (→) on the wall, usually adheres to crystalliferous sclerenchymatous cell (→); cell appears sub-rounded or sub-polygonal in surface view (2), with dot-like thickening (→) on the wall

Crystalliferous sclerenchymatous cell



Light yellow, contains 1 cluster of calcium oxalate in lumen; cell appears sub-rectangular in lateral view (1), appears sub-polygonal in surface view (2), with slightly thick wall

Sclerenchymatous cell of endocarp



Yellow, appears sub-polygonal in surface view (1), wall is thick, deeply sinuous, with dotted pits; appears sub-rectangular in lateral view (2), extremely flat, cells are usually overlapped in multiple layers, usually adheres to crystalliferous sclerenchymatous cell (→) or epidermal cell of testa (→); orange-yellow, yellowish-brown or bright white under polarized light microscope

Testa

Epidermal cell of testa



Appears polygonal in surface view, with beaded-thickened wall, lumen contains light brown or yellowish-brown substances

Key identification features

Micro-morphology

- ⊙ Appears sub-rounded in surface view; sometimes has gynophore
- ⊙ With ridge on one side, slightly flat or with groove on another side
- ⊙ Surface has granular protuberances, sometimes with lighter coloured part between the protuberances

Powder microscopy

- ⊙ Cluster of calcium oxalate: numerous, with small angle and obtuse apex
- ⊙ Palisade cell of pericarp: with abundant, uneven and long strip-shaped thickening on the wall in lateral view; with dot-like thickening on the wall in surface view
- ⊙ Sclerenchymatous cell of endocarp: wall is thick in surface view, deeply sinuous, with dotted pits; extremely flat in lateral view, cells are usually overlapped in multiple layers

Government Chinese Medicines Testing Institute

Department of Health

Enquiry hotline: 3188 8079

Website: www.cmro.gov.hk

The information in this pamphlet may be re-disseminated or reproduced, provided that the Government Chinese Medicines Testing Institute (GCMTI), as the source of information, is acknowledged and that the re-dissemination or reproduction is for non-commercial use. Any reproduction, adaptation, distribution, dissemination or making available of the information in this pamphlet for commercial use is strictly prohibited unless prior written authorisation is obtained from the GCMTI.