



**Identification of
Tiny Seed and Fruit
Types of Chinese
Materia Medica**

Semen Platycladi*



Source

The dried ripe kernel of *Platycladus orientalis* (L.) Franco in the family Cupressaceae

Property and flavour

Neutral; sweet

Meridian affinity

Heart, kidney and large intestine meridians

Actions

To nourish the heart and calm the mind; to moisten the intestine and promote bowel movements; to stop sweating

Note:

* Its name in Chinese Pharmacopoeia (2020 Edition) is “Platycladi Semen”.

Micro-morphological features

Shape

Ovate or long ovate



2 mm

Apex is slightly pointed

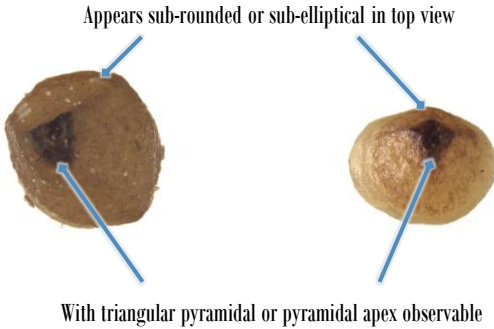


With membranous endotesta remained at the upper part

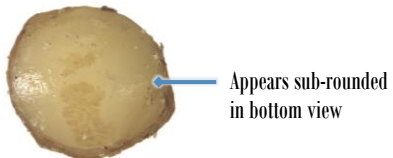
Base is obtuse

Surface view

1 mm

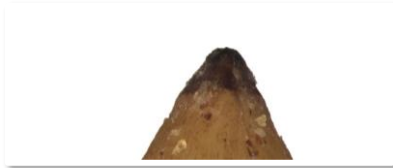


Top view



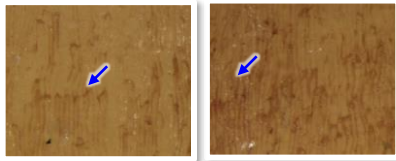
Bottom view

1 mm

Surface**Apex is deep brown**

0.5 mm

Surface of endotesta is light yellowish-brown or yellowish-brown, sometimes observable with irregularly distributed brown longitudinal striations (→)



0.2 mm

Kernel has lighter surface colour than endotesta, appears light yellow, yellowish-white or light yellowish-brown



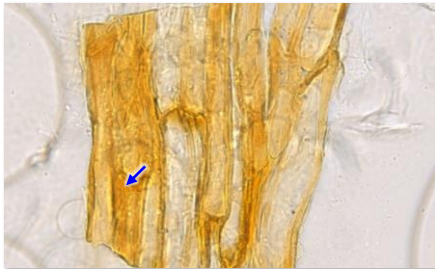
0.5 mm

Odour**Slight aroma**

Powder microscopic features

Testa

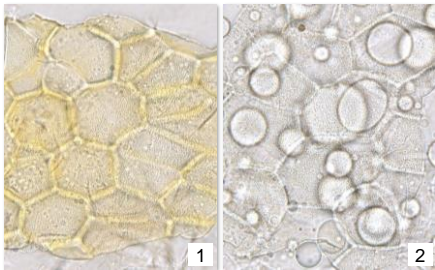
Endotesta cell



Appears long strip-shaped in surface view, usually adheres to hypodermal cell which has indistinct cell boundary and contains irregular brown pigment masses (→)

Endosperm

Epidermal cell of endosperm



Light yellow (1) or colourless (2), appears polygonal or sub-polygonal in surface view, with fine and dense reticulate striations, with slightly thick wall

Key identification features

Micro-morphology

- Ovate or long ovate, apex is slightly pointed, base is obtuse
- With membranous endotesta remained at the upper part
- Apex is deep brown, irregularly distributed brown longitudinal striations are sometimes observable on the surface of endotesta, kernel has lighter surface colour than endotesta

Powder microscopy

- Endotesta cell: appears long strip-shaped in surface view, usually adheres to hypodermal cell
- Epidermal cell of endosperm: with fine and dense reticulate striations in surface view, with slightly thick wall

For more information, please refer to [website of the Hong Kong Chinese Materia Medica Standards](#):

Platycladi Semen – HKCMMS (Vol 8)

Government Chinese Medicines Testing Institute

Department of Health

Enquiry hotline: 3188 8079

Website: www.cmro.gov.hk

The information in this pamphlet may be re-disseminated or reproduced, provided that the Government Chinese Medicines Testing Institute (GCMTI), as the source of information, is acknowledged and that the re-dissemination or reproduction is for non-commercial use. Any reproduction, adaptation, distribution, dissemination or making available of the information in this pamphlet for commercial use is strictly prohibited unless prior written authorisation is obtained from the GCMTI.