



**Identification of
Tiny Seed and Fruit
Types of Chinese
Materia Medica**

Semen Hygrophilae Salicifoliae



Source

The dried ripe seed of *Hygrophila salicifolia* (Vahl) Nees in the family Acanthaceae

Property and flavour

Cold; bitter

Meridian affinity

Spleen meridian

Actions

To clear heat and remove toxins; to resolve swelling and alleviate pain

Micro-morphological features

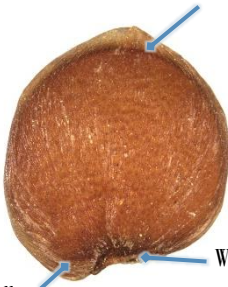
Shape

Flat, appears cordate or sub-oblong in surface view



0.5 mm

With translucent membranous trichomes on the surface



With linear hilum

Base is usually
oblique

Surface view

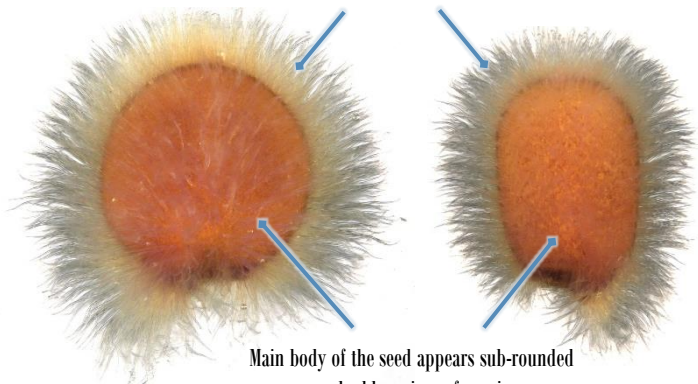


Bottom view

0.5 mm

Semen *Hygrophilae Salicifoliae*

Trichomes swell and spread out after
soaking in water

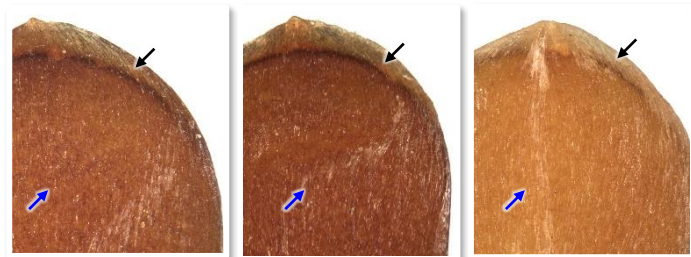


Surface view

0.5 mm

Surface

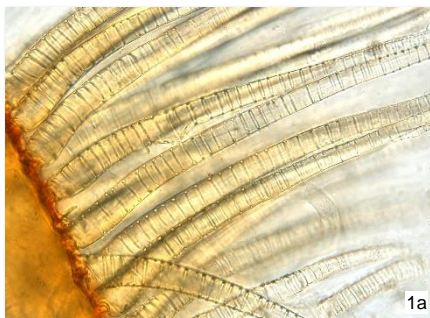
Membrane (→) is translucent, linear striations are faintly visible; main body of the seed (→) is brownish-red, dark brown or yellowish-brown



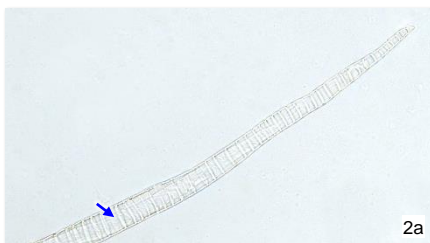
0.2 mm

Powder microscopic features

Trichome

Mucilaginous trichome

Numerous, light yellowish-brown or colourless, distributed on exotesta cell (1) or scattered (2), usually broken, with annular thickening, contains mucilage (→)

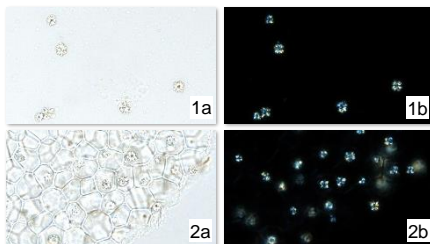


a. features under bright field; b. features under polarized light

50 µm

Crystal

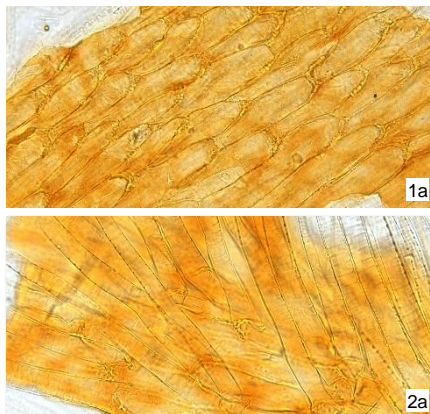
Cluster of calcium oxalate



Numerous, small, scattered (1) or present in cotyledon cell (2); polychromatic under polarized light microscope

Testa

Exotesta cell



Yellowish-brown, cell appears long-elliptical, sub-polygonal or sub-rectangular in surface view, some anticlinal walls are beaded-thickened (1), cell boundary is usually indistinct (2), with numerous trichomes on the surface

a. features under bright field; b. features under polarized light

50 μ m

Key identification features

Micro-morphology

- ⊙ Flat, appears cordate or sub-oblong in surface view
- ⊙ With translucent membranous trichomes on the surface, which swell and spread out after soaking in water

Powder microscopy

- ⊙ Mucilaginous trichome: with annular thickening, contains mucilage
- ⊙ Cluster of calcium oxalate: numerous and small
- ⊙ Exotesta cell: with numerous trichomes on the surface

Government Chinese Medicines Testing Institute

Department of Health

Enquiry hotline: 3188 8079

Website: www.cmro.gov.hk

The information in this pamphlet may be re-disseminated or reproduced, provided that the Government Chinese Medicines Testing Institute (GCMTI), as the source of information, is acknowledged and that the re-dissemination or reproduction is for non-commercial use. Any reproduction, adaptation, distribution, dissemination or making available of the information in this pamphlet for commercial use is strictly prohibited unless prior written authorisation is obtained from the GCMTI.