



**Identification of
Tiny Seed and Fruit
Types of Chinese
Materia Medica**

Fructus Evodiae*

1 cm

Source

The dried almost ripe fruit of *Evodia rutaecarpa* (Juss.) Benth., *E. rutaecarpa* (Juss.) Benth. var. *officinalis* (Dode) Huang or *E. rutaecarpa* (Juss.) Benth. var. *bodinieri* (Dode) Huang in the family Rutaceae

Property and flavour

Hot; pungent and bitter; slightly toxic

Meridian affinity

Liver, spleen, stomach and kidney meridians

Actions

To dissipate cold and alleviate pain; to downregulate counter-flow and stop vomiting; to assist yang and stop diarrhoea

Note:

* Its name in Chinese Pharmacopoeia (2020 Edition) is “Euodiae Fructus”.

Micro-morphological features

Shape

Slightly oblate, spherical or pentagonal-oblate



With 5-pointed stellate fissure at the apex



Top view

1 mm



Bottom view

Base has persistent calyx and fruit stalk or the scar of the latter

1 mm

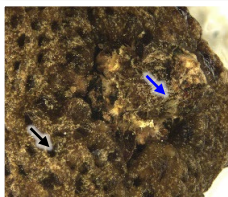


Lateral view

1 mm

Surface

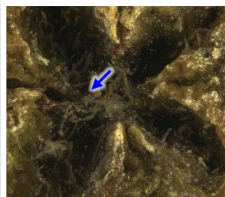
Dark yellowish-green or brown, rough, with densely dotted protuberances or dented oil spots (→), with pubescence (→) surrounding fissure, persistent calyx and fruit stalk scar or on fruit stalk



1 mm



1 mm



0.5 mm

Odour

With strong aroma

Powder microscopic features

Trichome

Non-glandular hair



Consists of 2-10 cells, straight or curved; smooth, with linear striations or warty protuberances, some contain brownish-yellow or brownish-red substances in lumina

Glandular hair



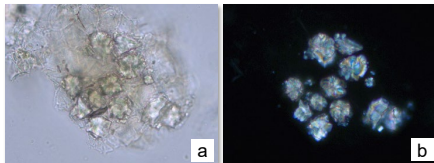
Head is elliptical or pear-shaped, consists of up to a dozen or more cells, usually contains yellowish-brown or reddish-brown substances; stalk consists of 2-5 cells

a. features under bright field; b. features under polarized light

50 μ m

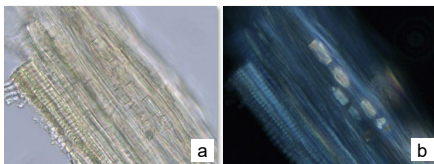
Crystal

Cluster of calcium oxalate



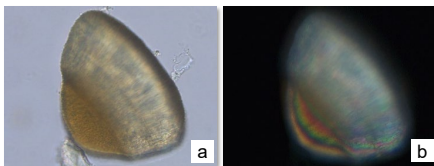
Usually present in pericarp cell; polychromatic under polarized light microscope

Prism of calcium oxalate



Absent or occasionally found; polychromatic under polarized light microscope

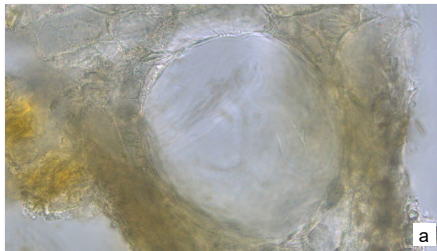
Crystal of hesperidin



Absent or occasionally found, light yellow, fan-shaped, with radial striations; polychromatic under polarized light microscope

Secretory tissue

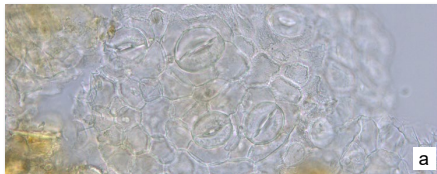
Oil-secretory cavity



Light yellow, intact ones are observable, sometimes also with fragments of oil-secretory cavity

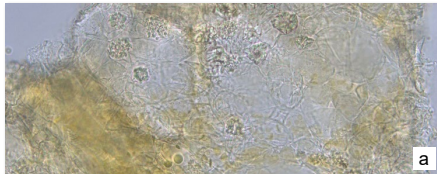
Pericarp

Exocarp cell



Colourless or light yellow, polygonal, usually with stoma, anomocytic or cyclocytic, with 4-6 subsidiary cells

Mesocarp cell



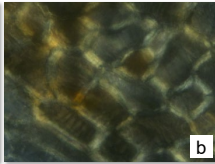
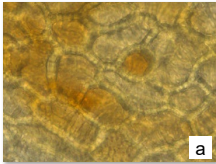
Light yellow, sub-rounded, with slightly thick wall, loosely arranged, usually with oil-secretory cavity and crystal of calcium oxalate

a. features under bright field; b. features under polarized light

50 μ m

Others

Stone cell



Sub-rounded or polygonal, consists of single or several cells or present in groups, lumen is relatively large, some contain yellowish-brown substances; bright white or polychromatic under polarized light microscope

a. features under bright field; b. features under polarized light

50 μ m

Key identification features

Micro-morphology

- ⊙ Slightly oblate, spherical or pentagonal-oblate, with 5-pointed stellate fissure at the apex
- ⊙ Dark yellowish-green or brown, rough, with densely dotted protuberances or dented oil spots
- ⊙ With pubescence surrounding fissure, persistent calyx and fruit stalk scar or on fruit stalk

Powder microscopy

- ⊙ Non-glandular hair: consists of 2-10 cells, straight or curved; smooth, with linear striations or warty protuberances, some contain brownish-yellow or brownish-red substances in lumina
- ⊙ Glandular hair: head is elliptical or pear-shaped, consists of up to a dozen or more cells, usually contains yellowish-brown or reddish-brown substances; stalk consists of 2-5 cells
- ⊙ Crystal of calcium oxalate: mainly is cluster of calcium oxalate, usually present in pericarp cell

For more information, please refer to [website of the Hong Kong Chinese Materia Medica Standards](#):

Fructus Evodiae — HKCMMS (Vol 3)

Government Chinese Medicines Testing Institute

Department of Health

Enquiry hotline: 3188 8079

Website: www.cmro.gov.hk

The information in this pamphlet may be re-disseminated or reproduced, provided that the Government Chinese Medicines Testing Institute (GCMTI), as the source of information, is acknowledged and that the re-dissemination or reproduction is for non-commercial use. Any reproduction, adaptation, distribution, dissemination or making available of the information in this pamphlet for commercial use is strictly prohibited unless prior written authorisation is obtained from the GCMTI.