

Fact sheet of reference DNA sequences of *Cervus nippon* (梅花鹿)

Summary	Information
<b>Scientific name</b>	<i>Cervus nippon</i> Temminck
<b>Type of reference material used for data generation</b>	Cornu Cervi Pantotrichum (鹿茸) and animal parts of certified species origin
<b>Cornu Cervi Pantotichum (鹿茸) (number of specimens / locality)</b>	<ul style="list-style-type: none"> <li>● 3 / Hong Kong SAR, China (local market)</li> <li>● 4 / Shuangyang, Jilin Province, China</li> <li>● 2 / Xingcheng, Liaoning Province, China</li> <li>● 1 / Xiuying, Hainan Province, China</li> </ul>
<b>Animal parts of certified species origin (number of specimens / locality)</b>	<ul style="list-style-type: none"> <li>● 3 / Shuangyang, Jilin Province, China</li> <li>● 2 / Xingcheng, Liaoning Province, China</li> <li>● 2 / Xiuying, Hainan Province, China</li> <li>● 3 / Changhua, Taiwan Province, China</li> </ul>
<b>Total number of specimen</b>	● 20
<b>Specimen source</b>	<ul style="list-style-type: none"> <li>● GCMTI collection</li> <li>● Hong Kong Chinese Materia Medica Standards (HKCMMS) Project</li> </ul>
<b>Method for data generation</b>	● GCMTI RD-6:2020
<b>Length of DNA barcode</b>	<ul style="list-style-type: none"> <li>● Mitochondrial cytochrome c oxidase subunit 1 (COI) is 658 bp</li> <li>● Mitochondrial cytochrome b (CYTB) is 421 bp</li> <li>● Mitochondrial 16S ribosomal RNA (16SrRNA) is from 449 to 453 bp</li> </ul>

# Reference DNA Sequence

## Chinese Materia Medica (CMM)

### DNA Information

#### Mitochondrial cytochrome c oxidase subunit I (COI)

Batch ID. BI191126

```
>RD351-1B_COI
TACTCTGTATCTACTATTGGTGCCTGAGCAGGCATAGTAG
GAACAGCCTTAAGCCTACTGATTCGTGCCGAAC TGGGCCA
ACCTGGTACTCTGCTTGGAGATGATCAAATTTATAATGTTA
TCGTAACCGCACATGCATTTCGTAATAATTTCTTTATAGTT
ATACCAATTATAATCGGAGGATTTGGTAATTGACTAGTTC
CCTAATAATTTGGTGCCTCAGACATAGCATTCCCTCGAATAA
ACAATATAAGCTTTTACTCCTCCCTCCTTCTTTACTAC
TTTTAGCATCATCTATAGTTGAAGCTGGCGCAGGAACAGG
CTGAACTGTATATCCCCCTTAGCTGGCAACTTAGCTCACG
CAGGGGCTTCAGTAGACCTGACCATTTTTTCTTTACACTTG
GCAGGTGTCTCCTCAATTCTAGGGGCCATTAAC TTTATTAC
AACAAATTATCAATATAAAACCCCTGCCATATCACAATATC
AAACCCCTCTATTTCGTGTGATCCCGTATTAGTCACTGCTGTA
CTACTACTTCTCTACTCCCTGACTAGCAGCCGGAATCAC
AATACTATTAACAGACCGAAACCTAAATACAACCTTTTTTTG
ACCCAGCAGGAGGCGGAGATCCTATTCTATATCAACACTT
GTTC
```

#### Mitochondrial cytochrome b (CYTB)

Batch ID. BI191126

```
>RD351-1B_CYTB
AGGAGCAACAGTCATCACCAACCTCCTCTCAGCAATTCCAT
ATATTGGCACAAAACCTAGTCGAATGAATCTGAGGAGGCTT
TTCAGTAGATAAAGCAACCCTAACCCGATTCTTCGCTTTCC
ACTTTATTTCTCCATTCATCATCGCAGCACTCGCTATAGTA
CACTTACTCTTCTCAGGACAGGATCCAACAACCCAAC
AGGAAATCCCATCGGACGCAGACAAAATCCCCTTCCATCCTT
ACTACACTATTAAGATATCCTGGGTATCTTACTTCTAATA
CTCTTCTAATATTACTAGTATTATTCGCACCAGACCTGCTT
GGAGATCCAGACAACTATAACCCAGCAAAATCCACTCAACA
CACCCCCYCACATCAAACCTGAATGATACTTCTATTGCA
TAGCAATCCTA
```

#### Mitochondrial 16S ribosomal RNA (16SrRNA)

Batch ID. BI191126

```
>RD351-1B_16SrRNA
TGTTYTYTAAATAGGGACTTGTATGAATGGCCACACGAGG
GTTTTACTGTCTTACTTCCAATCAGTGAAATTGACCTTCC
CGTGAAGAGGGCGGGAATATATTAATAAGACGAGAAGACCC
TATGGAGCTTTAACTACTTAGCCAAAAGAAAACAAATTTT
ATTACTAAGGAAACAACAACACTCTTTATGGGCTAACAGC
TTTGGTTGGGGTGACCTCGGAGAACAAAGAAATCCTCCGAG
CGATTTTAAAGACTAGACCTACAAGTCGAATCACACAATC
GTTTATTGATCCAAAAAATAATGATCAACGGAACAAGT
TACCCTAGGGATAACAGCGCAATCCTATTCAAGAGTCCAT
ATCGACAATAGGGTTTACGACCTCGATGTTGGATCAGGAC
ATCCCGATGGTGAACCGCTATCAAAGGTTCTGTTGTTCAA
CGATTAAGT
```

Remarks: observations at nucleotide positions 5 and 7

### Reference Detail

Description of reference material	Cornu Cervi Pantotrichum
Scientific name	<i>Cervus nippon</i> Temminck
Laboratory number	RD351
Sample mark	RD351-1B
Locality	Xingcheng, Liaoning Province, China
Authenticated	Yes
Remarks	16S: 5Y, 7Y

### Image



# Reference DNA Sequence

## Chinese Materia Medica (CMM)

### DNA Information

#### Mitochondrial cytochrome c oxidase subunit I (COI)

Batch ID. BI191126

```
>RD352-1B_COI
TACTCTGTATCTACTATTTGGTGCCTGAGCAGGCATAGTAG
GAACAGCCTTAAGCCTACTGATTCGTGCCGAAC TGGGCCA
ACCTGGTACTCTGCTTGGAGATGATCAAATTTATAATGTTA
TCGTAACCGCACATGCATTTCGTAATAATTTCTTTATAGTT
ATACCAATTATAATCGGAGGATTTGGTAATTGACTAGTTCC
CCTAATAATTTGGTGCCTCAGACATAGCATTCCCTCGAATAA
ACAATAAAGCTTTTACTCCTCCCTCCTTCTTTACTACTAC
TTTTAGCATCATCTATAGTTGAAGCTGGCGCAGGAACAGG
CTGAACTGTATATCCCCCTTAGCTGGCAACTTAGCTCACG
CAGGGGCTTCAGTAGACCTGACCATTTTTTCTTTACACTTG
GCAGGTGTCTCCTCAATTCTAGGGGCCATTAAC TTTATTAC
AACAATTATCAATATAAAACCCCTGCCATATCACAATATC
AAACCCCTCTATTTCGTGTGATCCCGTATTAGTCACTGCTGTA
CTACTACTTCTCTACTCCCTGACTAGCAGCCGGAATCAC
AATACTATTAACAGACCGAAACCTAAATACAACCTTTTTTG
ACCCAGCAGGAGGCGGAGATCCTATTCTATATCAACACTT
GTTT
```

#### Mitochondrial cytochrome b (CYTB)

Batch ID. BI191126

```
>RD352-1B_CYTB
AGGAGCAACAGTCATCACCAACCTCCTCTCAGCAATTCCAT
ATATTGGCACAAAACCTAGTCGAATGAATCTGAGGAGGCTT
TTCAGTAGATAAAGCAACCCTAACCCGATTCTTCGCTTTCC
ACTTTATTTCTTCCATTCATCATCGCAGCACTCGCTATAGTA
CACTTACTTCTCCTTCAGGACAGGATCCAACAACCCAAC
AGGAAATCCCATCGGACGCAGACAAAATCCCCTTCCATCCTT
ACTACACTATTAAGATATCCTGGGTATCTTACTTCTAATA
CTCTTCTAATATTACTAGTATTATTCGCACCAGACCTGCTT
GGAGATCCAGACAACTATAACCCAGCAAAATCCACTCAACA
CACCCCTCACATCAAACCTGAATGATACTTCTATTGCA
TAGCAATCCTA
```

#### Mitochondrial 16S ribosomal RNA (16SrRNA)

Batch ID. BI191126

```
>RD352-1B_16SrRNA
TGTTYTYTAAATAGGGACTTGTATGAATGGCCACACGAGG
GTTTTACTGTCTTACTTCCAATCAGTGAAATTGACCTTCC
CGTGAAGAGGCGGGAATATATTAATAAGACGAGAAGACCC
TATGGAGCTTTAACTACTTAGCCAAAAGAAAACAAATTTT
ATTACTAAGGAAACAACAACACTCTTTATGGGCTAACAGC
TTTGGTTGGGGTGACCTCGGAGAACAAAGAAATCCTCCGAG
CGATTTTAAAGACTAGACCTACAAGTCGAATCACACAATC
GTTTATTGATCCAAAAAATAATGATCAACGGAACAAGT
TACCCTAGGGATAACAGCGCAATCCTATTCAAGAGTCCAT
ATCGACAATAGGGTTTACGACCTCGATGTTGGATCAGGAC
ATCCCGATGGTGAACCGCTATCAAAGGTTTCGTTTGTCAA
CRATTAAGT
```

Remarks: observations at nucleotide positions 5, 7 and 445

### Reference Detail

Description of reference material	Cornu Cervi Pantotrichum
Scientific name	<i>Cervus nippon</i> Temminck
Laboratory number	RD352
Sample mark	RD352-1B
Locality	Xingcheng, Liaoning Province, China
Authenticated	Yes
Remarks	16S: 5Y, 7Y, 445R

### Image



# Reference DNA Sequence

## Chinese Materia Medica (CMM)

### DNA Information

#### Mitochondrial cytochrome c oxidase subunit I (COI)

Batch ID. BI191126

```
>RD354-1C_COI
TACTCTGTATCTACTATTGGTGCCTGAGCAGGCATAGTAG
GAACAGCCTTAAGCCTACTGATTCGTGCCGAAC TGGGCCA
ACCTGGTACTCTGCTTGGAGATGATCAAATTTATAATGTTA
TCGTAACCGCACATGCATTTCGTAATAATTTTCTTTATAGTT
ATACCAATTATAATCGGAGGATTTGGTAATTGACTAGTTCC
CCTAATAATTGGTGCCTCCAGACATAGCATTCCCTCGAATAA
ACAATATAAGCTTTTGACTCCTCCCTCCTTCTTTCTTACTAC
TTTTAGCATCATCTATAGTTGAAGCTGGCGCAGGAACAGG
CTGAAGTGTATATCCCCCTTAGCTGGCAACTTAGCTCACG
CAGGGGCTTCAGTAGACCTGACCATTTTTTCTTTACACTTG
GCAGGTGTCTCCTCAATTCTAGGGGCCATTAAC TTTATTAC
AACAAATTATCAATATAAAACCCCTGCCATATCACAATATC
AAACCCCTCTATTTCGTGTGATCCCGTATTAGTCACTGCTGTA
CTACTACTTCTCTACTCCCTGACTAGCAGCCGGAATCAC
AATACTATTAACAGACCCGAAACCTAAATACAACCTTTTTTTG
ACCCAGCAGGAGGCGGAGATCCTATTCTATATCAACACTT
GTTC
```

#### Mitochondrial cytochrome b (CYTB)

Batch ID. BI191126

```
>RD354-1C_CYTB
AGGAGCAACAGTCATCACCAACCTCCTCTCAGCAATTCCAT
ATATTGGCACAAAACCTAGTCGAATGAATCTGAGGAGGCTT
TTCAGTAGATAAAAGCAACCCTAACCCGATTCTTCGCTTTCC
ACTTTATTTCTTCCATTCATCATCGCAGCACTCGCTATAGTA
CACTTACTCTTCTTTCAGGACAGGATCCAACAACCCAAC
AGGAATCCCATCGGACGCAGACAAAATCCCTTCCATCCTT
ACTACACTATTAAGATATCCTGGGTATCTTACTTCTAATA
CTCTTCTAATATTACTAGTATTATTCGCACCAGACCTGCTT
GGAGATCCAGACAACTATAACCCAGCAAATCCACTCAACA
CACCCCTCACATCAAACCTGAATGATACTTCTATTTGCA
TACGCAATCCTA
```

#### Mitochondrial 16S ribosomal RNA (16SrRNA)

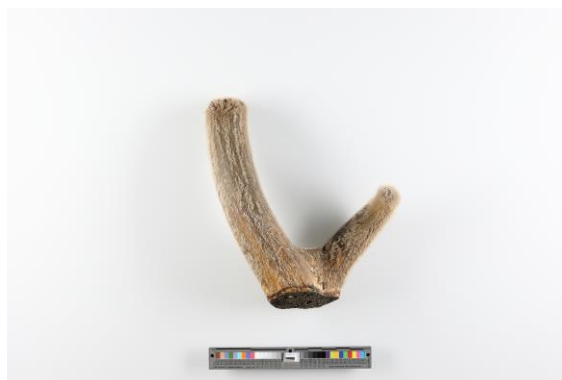
Batch ID. BI191126

```
>RD354-1C_16SrRNA
TGTTCTCTAAATAGGGACTTGTATGAATGGCCACACGAGG
GTTTTACTGTCTTACTTCCAATCAGTGAAATTGACCTTCC
CGTGAAGAGGGCGGGAATATATTAATAAGACGAGAAGACCC
TATGGAGCTTTAACTACTTAGCCCAAAAGAAAACAAATTTT
ATTACTAAGGAAACAACAACACTCTTTATGGGCTAACAGC
TTTGGTTGGGGTGACCTCGGAGAACAAAGAAATCCTCCGAG
CGATTTTAAAGACTAGACCTACAAGTCGAATCACACAATC
GTTTATTGATCCAAAAAATGATCAACGGAACAAGTTAC
CCTAGGGATAACAGCGCAATCCTATTCAAGAGTCCATATC
GACAATAGGGTTTACGACCTCGATGTTGGATCAGGACATC
CCGATGGTGAACCGCTATCAAAGGTTTCGTTTGTCAACGA
TTAAAGT
```

### Reference Detail

Description of reference material	Cornu Cervi Pantotrichum
Scientific name	<i>Cervus nippon</i> Temminck
Laboratory number	RD354
Sample mark	RD354-1C
Locality	Shuangyang, Jilin Province, China
Authenticated	Yes

### Image



# Reference DNA Sequence

## Chinese Materia Medica (CMM)

### DNA Information

#### Mitochondrial cytochrome c oxidase subunit I (COI)

Batch ID. BI191126

```
>RD355-1B_COI
TACTCTGTATCTACTATTGGTGCCTGAGCAGGCATAGTAG
GAACAGCCTTAAGCCTACTGATTCGTGCCGAAC TGGGCCA
ACCTGGTACTCTGCTTGGAGATGATCAAATTTATAATGTTA
TCGTAACCGCACATGCATTCTGTAATAATTTCTTTATAGTT
ATACCAATTATAATCGGAGGATTTGGTAATTGACTAGTTC
CCTAATAATTGGTGCCTCAGACATAGCATTCCCTCGAATAA
ACAATATAAGCTTTTACTCTCCCTCCTTCTTTCTTACTAC
TTTTAGCATCATCTATAGTTGAAGCTGGCGCAGGAACAGG
CTGAACTGTATATCCCCCTTAGCTGGCAACTTAGCTCACG
CAGGGGCTTCAGTAGACCTGACCATTTTTTCTTTACACTTG
GCAGGTGTCTCCTCAATTCTAGGGGCCATTAAC TTTATTAC
AACAATTATCAATATAAAACCCCTGCCATATCACAATATC
AAACCCCTCTATTTCGTGTGATCCCGTATTAGTCACTGCTGTA
CTACTACTTCTCTACTCCCTGACTAGCAGCCGGAATCAC
AATACTATTAACAGACCGAAACCTAAATACAACCTTTTTTTG
ACCCAGCAGGAGGCGGAGATCCTATTCTATATCAACACTT
GTTC
```

#### Mitochondrial cytochrome b (CYTB)

Batch ID. BI191126

```
>RD355-1B_CYTB
AGGAGCAACAGTCATCACCAACCTCCTCTCAGCAATTCCAT
ATATTGGCACAAAACCTAGTCGAATGAATCTGAGGAGGCTT
TTCAGTAGATAAAAGCAACCCTAACCCGATTCTTCGCTTTCC
ACTTTATTTCTTCCATTCATCATCGCAGCACTCGCTATAGTA
CACTTACTCTTCTTACGAGACAGGATCCAACAACCCAAC
AGGAAATCCCATCGGACGCAGACAAAATCCCCTTCCATCCTT
ACTACACTATTAAGATATCCTGGGTATCTTACTTCTAATA
CTCTTCTAATATTACTAGTATTATTCGCACCAGACCTGCTT
GGAGATCCAGACAACTATAACCCAGCAAATCCACTCAACA
CACCCCTCACATCAAACCTGAATGATACTTCTATTGCA
TACGCAATCCTA
```

#### Mitochondrial 16S ribosomal RNA (16SrRNA)

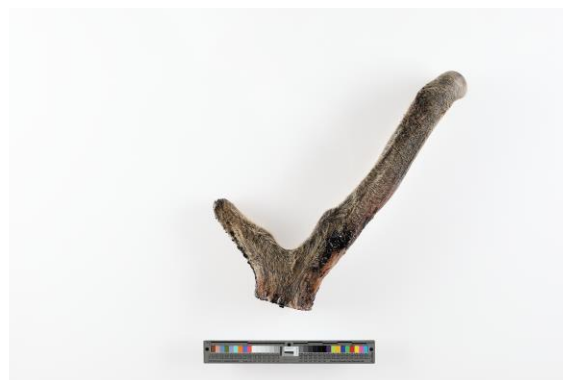
Batch ID. BI191126

```
>RD355-1B_16SrRNA
TGTTCTCTAAATAGGGACTTGTATGAATGGCCACACGAGG
GTTTTACTGTCTTACTTCCAATCAGTGAAATTGACCTTCC
CGTGAAGAGGGCGGGAATATATTAATAAGACGAGAAGACCC
TATGGAGCTTTAACTACTTAGCCCAAAGAAACAAAATTC
ATTACTAAGGAAACAACAACACTCTTTATGGGCTAACAGC
TTTGGTTGGGGTGACCTCGGAGAACAAAGAAATCCTCCGAG
CGATTTTAAAGACTAGACCTACAAGTCGAATCACACAATC
GTTTATTGATCCAAAAAATGATCAACGGAACAAGTT
ACCCTAGGGATAACAGCGCAATCCTATTCAAGAGTCCATA
TCGACAATAGGGTTTACGACCTCGATGTTGGATCAGGACA
TCCCAGTGGTGAACCGCTATCAAAGGTTCTGTTGTTCAAC
GATTAAGT
```

### Reference Detail

Description of reference material	Cornu Cervi Pantotrichum
Scientific name	<i>Cervus nippon</i> Temminck
Laboratory number	RD355
Sample mark	RD355-1B
Locality	Shuangyang, Jilin Province, China
Authenticated	Yes

### Image



# Reference DNA Sequence

## Chinese Materia Medica (CMM)

### DNA Information

#### Mitochondrial cytochrome c oxidase subunit I (COI)

Batch ID. BI191126-2

```
>RD356-1B_COI
TACTCTGTATCTACTATTGGTGCCTGAGCAGGCATAGTAG
GAACAGCCTTAAGCTACTGATTCGTGCCGAAC TGGGCCA
ACCTGGTACTCTGCTTGGAGATGATCAAATTTATAATGTTA
TCGTAACCGCACATGCATTCTGTAATAATTTTCTTTATAGTT
ATACCAATTATAATCGGAGGATTTGGTAATTGACTAGTTCC
CCTAATAATTTGGTGCCTCCAGACATAGCATTCCCTCGAATAA
ACAATATAAGCTTTTGACTCCTCCCTCCTTCTTTCTTACTAC
TTTTAGCATCATCTATAGTTGAAGCTGGCGCAGGAACAGG
CTGAACTGTATATCCCCCTTAGCTGGCAACTTAGCTCACG
CAGGGGCTTCAGTAGACCTGACCATTTTTCTTTACACTTG
GCAGGTGTCTCCTCAATTCTAGGGGCCATTAAC TTTATTAC
AACAAATTATCAATATAAAACCCCTGCCATATCACAATATC
AAACCCCTCTATTTCGTGTGATCCGATTAGTCACTGCTGTA
CTACTACTTCTCTACTCCCTGACTAGCAGCCGGAATCAC
AATACTATTAACAGACCCGAAACCTAAATACAACCTTTTTTT
ACCCAGCAGGAGGCGGAGATCCTATTCTATATCAACACTT
GTTT
```

#### Mitochondrial cytochrome b (CYTB)

Batch ID. BI191126-2

```
>RD356-1B_CYTB
AGGAGCAACAGTCATCACCAACCTCCTCTCAGCAATTCCAT
ATATTGGCACAAAACCTAGTCGAATGAATCTGAGGAGGCTT
TTCAGTAGATAAAAGCAACCCTAACCCGATTCTTCGCTTTCC
ACTTTATTTCTTCCATTCATCATCGCAGCACTCGCTATAGTA
CACTTACTTCTTCTCAGGAGACAGGATCCAACAACCCAAC
AGGAAATCCCATCGGACGCAGACAAAATCCCCTTCCATCCTT
ACTACACTATTAAGATATCCTGGGTATCTTACTTCTAATA
CTCTTCTAATATTACTAGTATTATTCGCACCAGACCTGCTT
GGAGATCCAGACAACTATAACCCAGCAAATCCACTCAACA
CACCCCTCACATCAAACCTGAATGATACTTCTATTGCA
TACGCAATCCTA
```

#### Mitochondrial 16S ribosomal RNA (16SrRNA)

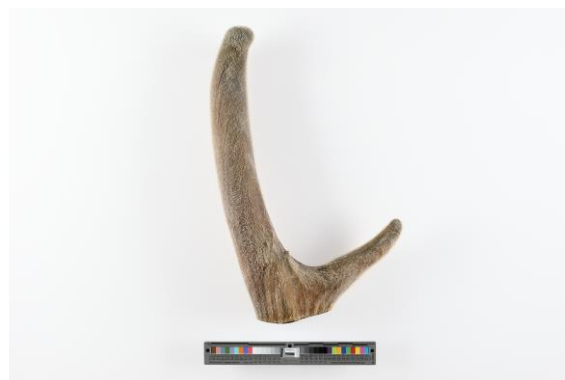
Batch ID. BI191126-2

```
>RD356-1B_16SrRNA
TGTTCTCTAAATAGGGACTTGTATGAATGGCCACACGAGG
GTTTTACTGTCTTACTTCCAATCAGTGAAATTGACCTTCC
CGTGAAGAGGGCGGGAATATATTAATAAGACGAGAAGACCC
TATGGAGCTTAACTACTTAGCCCAAAGAAACAAAATTTT
ATTACTAAGGAAACAACAACACTCTTTATGGGCTAACAGC
TTTGGTTGGGGTGACCTCGGAGAACAAAGAAATCCTCCGAG
CGATTTTAAAGACTAGACCTACAAGTCGAATCACACAATC
GTTTATTGATCCAAAAAATTGATCAACGGAACAAGTTAC
CCTAGGGATAACAGCGCAATCCTATTCAAGAGTCCATATC
GACAATAGGGTTTACGACCTCGATGTTGGATCAGGACATC
CCGATGGTGAACCGCTATCAAAGGTTCTGTTTGTCAACGA
TTAAAGT
```

### Reference Detail

Description of reference material	Cornu Cervi Pantotrichum
Scientific name	<i>Cervus nippon</i> Temminck
Laboratory number	RD356
Sample mark	RD356-1B
Locality	Shuangyang, Jilin Province, China
Authenticated	Yes

### Image



# Reference DNA Sequence

## Chinese Materia Medica (CMM)

### DNA Information

#### Mitochondrial cytochrome c oxidase subunit I (COI)

Batch ID. BI191126-2

```
>RD357-1C_COI
TACTCTGTATCTACTATTGGTGCCTGAGCAGGCATAGTAG
GAACAGCCTTAAGCTACTGATTCGTGCCGAAC TGGGCCA
ACCTGGTACTCTGCTTGGAGATGATCAAATTTATAATGTTA
TCGTAACCGCACATGCATTCTGTAATAATTTCTTTATAGTT
ATACCAATTATAATCGGAGGATTTGGTAATTGACTAGTTC
CCTAATAATTTGGTGCCTCAGACATAGCATTCCCTCGAATAA
ACAATATAAGCTTTTACTCTCCCTCCTTCTTTCTTACTAC
TTTTAGCATCATCTATAGTTGAAGCTGGCGCAGGAACAGG
CTGAACTGTATATCCCCCTTAGCTGGCAACTTAGCTCACG
CAGGGGCTTCAGTAGACCTGACCATTTTTCTTTACACTTG
GCAGGTGTCTCCTCAATTCTAGGGGCCATTAAC TTTATTAC
AACAAATTATCAATATAAAACCCCTGCCATATCACAATATC
AAACCCCTCTATTTCGTGTGATCCCGTATTAGTCACTGCTGA
CTACTACTTCTCTACTCCCTGTACTAGCAGCCGGAATCAC
AATACTATTAACAGACCCGAAACCTAAATACAACCTTTTTTT
ACCCAGCAGGAGGCGGAGATCCTATTCTATATCAACACTT
GTTC
```

#### Mitochondrial cytochrome b (CYTB)

Batch ID. BI191126-2

```
>RD357-1C_CYTB
AGGAGCAACAGTCATCACCAACCTCCTCTCAGCAATTCCAT
ATATTGGCACAAAACCTAGTCGAATGAATCTGAGGAGGCTT
TTCAGTAGATAAAAGCAACCCTAACCCGATTCTTCGCTTTCC
ACTTTATTTCTTCCATTCATCATCGCAGCACTCGCTATAGTA
CACTTACTCTTCTTACGAGACAGGATCCAACAACCCAAC
AGGAAATCCCATCGGACGCAGACAAAATCCCCTTCCATCCTT
ACTACACTATTAAGATATCCTGGGTATCTTACTTCTAATA
CTCTTCTAATATTACTAGTATTATTCGCACCAGACCTGCTT
GGAGATCCAGACAACTATAACCCAGCAAATCCACTCAACA
CACCCCTCACATCAAACCTGAATGATACTTCTATTTGCA
TACGCAATCCTA
```

#### Mitochondrial 16S ribosomal RNA (16SrRNA)

Batch ID. BI191126-2

```
>RD357-1C_16SrRNA
TGTTCTCTAAATAGGGACTTGTATGAATGGCCACACGAGG
GTTTTACTGTCTTACTTCCAATCAGTGAAATTGACCTTCC
CGTGAAGAGGGCGGGAATATATTAATAAGACGAGAAGACCC
TATGGAGCTTAACTACTTAGCCCAAAGAAACAAAATTTT
ATTACTAAGGAAACAACAACACTCTTTATGGGCTAACAGC
TTTGGTTGGGGTGACCTCGGAGAACAAAGAAATCCTCCGAG
CGATTTTAAAGACTAGACCTACAAGTCGAATCACACAATC
GTTTATTGATCCAAAAAATTGATCAACGGAACAAGTTAC
CCTAGGGATAACAGCGCAATCCTATTCAAGAGTCCATATC
GACAATAGGGTTTACGACCTCGATGTTGGATCAGGACATC
CCGATGGTGAACCGCTATCAAAGGTTCTGTTTGTCAACGA
TTAAAGT
```

### Reference Detail

Description of reference material	Cornu Cervi Pantotrichum
Scientific name	<i>Cervus nippon</i> Temminck
Laboratory number	RD357
Sample mark	RD357-1C
Locality	Shuangyang, Jilin Province, China
Authenticated	Yes

### Image



# Reference DNA Sequence

## Chinese Materia Medica (CMM)

### DNA Information

#### Mitochondrial cytochrome c oxidase subunit I (COI)

Batch ID. BI191126-2

```
>RD360-1C_COI
TACTCTGTATCTACTGTTTGGTGCCTGAGCAGGCATAGTAG
GAACAGCCTTAAGCCTACTGATTCGTGCCGAAC TGGGCCA
ACCCGGTACTCTGCTTGGAGATGACCAAATTTATAATGTTA
TCGTAACCGCACATGCATTTCGTAATAATTTTCTTTATAGTT
ATACCAATTATAATTGGAGGGTTTGGTAATTGACTAGTCCC
CCTAATAATTGGTGCCTCAGACATAGCATTCCCTCGAATAA
ATAATATAAGCTTCTGACTCCTCCCTCTTCTTACTACTAC
TTTTAGCATCATCCATAGTTGAAGCTGGCGCAGGAACAGG
CTGAACTGTATATCCCCCTTAGCTGGCAACTTAGCTCAGC
CAGGGGCTTCAGTAGACCTGACCATTTTTTCTTTACACTTA
GCAGGTGTCTCCTCAATTCTAGGGGCCATTAAC TTTATTAC
AACAAATTATCAATATAAAACCCCTGCCATATCACAATATC
AAACCCCTCTATTTCGTGTGATCCCGTATTAGTCACTGCTGTA
CTACTACTTCTCTACTCCCTGACTAGCAGCCGGAATTAC
AATACTATTAACAGACCGAAACCTAAATACAACCTTTTTTTG
ACCCAGCAGGAGGCGGAGATCCTATTCTATATCAACACTT
GTTT
```

#### Mitochondrial cytochrome b (CYTB)

Batch ID. BI191126-2

```
>RD360-1C_CYTB
AGGAGCAACAGTCATCACCAACCTCCTCTCAGCAATTCCAT
ACATTGGCACAAAACCTAGTCGAATGAATCTGAGGGGGCTT
TTCAGTAGATAAAGCAACCCTGACCCGATTTTTCGCTTTCC
ACTTTATTTCTCCATTCATCATCGCAGCACTCGCTATAGTA
CACTTACTCTTCTCAGGACAGGATCCAATAACCCAAC
AGGAATCCCATCGGACGACAGACAAAATCCCTTCCATCCTT
ACTATACTATTAAGATATCTTAGGCATCTTACTTCTAATA
CTCTTCTAATATTACTAGTACTATTCGCACCAGACCTGCT
TGGAGACCCAGACAACTATAACCCAGCAAATCCACTCAAC
ACACCCCTCACATCAAACCCGAATGATACTTCTATTGTC
ATACGCAATCCTA
```

#### Mitochondrial 16S ribosomal RNA (16SrRNA)

Batch ID. BI191126-2

```
>RD360-1C_16SrRNA
TGTTCTYTAAATAGGGACTTGTATGAATGGCCACACGAGG
GTTTTACTGTCTTACTTCCAATCAGTGAAATTGACCTTCC
CGTGAAGAGGGCGGGAATATATTAATAAGACGAGAAGACCC
TATGGAGCTTTAACTACTTAGCCAAAAGAAAACAAATTTT
ACTACTAAGGAAACAACAACACTCTTTATGGGCTAACAGC
TTTGGTTGGGGTGACCTCGGAGAACAAAGAAATCCCTCCGAG
CGATTTTAAAGACTAGACCTACAAGTCGAATCACACAATC
GTTTATTGATCCAAAAAATTGATCAACGGAACAAGTTACC
CTAGGGATAACAGCGCAATCCTATTCAAGAGTCCATATCG
ACAATAGGGTTTACGACCTCGATGTTGGATCAGGACATCC
CGATGGTGCAACCGCTATCAAAGTTCTGTTTGTCAACGAT
TAAAGT
```

Remarks: observation at nucleotide position 7

### Reference Detail

Description of reference material	Cornu Cervi Pantotrichum
Scientific name	<i>Cervus nippon</i> Temminck
Laboratory number	RD360
Sample mark	RD360-1C
Locality	Xiuying, Hainan Province, China
Authenticated	Yes
Remarks	16S: 7Y

### Image





# Reference DNA Sequence

## Chinese Materia Medica (CMM)

### DNA Information

#### Mitochondrial cytochrome c oxidase subunit I (COI)

Batch ID. BI180801

```
>RD119-F_COI
TACTCTGTACTACTATTGGTGCCTGAGCAGGCATAGTAG
GAACAGCCTTAAGCCTACTGATTCGTGCCGAAC TGGGCCA
ACCTGGTACTCTGCTTGGAGATGATCAAATTTATAATGTTA
TCGTAACCGCACATGCATTTCGTAATAATTTCTTTATAGTT
ATACCAATTATAATCGGAGGATTTGGTAATTGACTAGTTCC
CCTAATAATTTGGTGCCTCAGACATAGCATTCCCTCGAATAA
ACAATATAAGCTTTTACTCCTCCCTCTCTTTACTACTAC
TTTTAGCATCATCTATAGTTGAAGCTGGCGCAGGAACAGG
CTGAACTGTATATCCCCCTTAGCTGGCAACTTAGCTCACG
CAGGGGCTTCAGTAGACTGACCATTTTTCTTTACACTTG
GCAGGTGTCTCCTCAATTCTAGGGGCCATTAAC TTTATTAC
AACAAATTATCAATATAAAACCCCTGCCATATCACAATATC
AAACCCCTCTATTTCGTGTGATCCCGTATTAGTCACTGCTGTA
CTACTACTTCTCTACTCCCTGTACTAGCAGCCGGAATCAC
AATACTATTAACAGACCGAAACCTAAATACAACCTTTTTTTG
ACCCAGCAGGAGGCGGAGATCCTATTCTATATCAACACTT
GTTC
```

#### Mitochondrial cytochrome b (CYTB)

Batch ID. BI180801

```
>RD119-F_CYTB
AGGAGCAACAGTCATCACCAACCTCCTCTCAGCAATTCCAT
ATATTGGCACAAAACCTAGTCGAATGAATCTGAGGAGGCTT
TTCAGTAGATAAAGCAACCCTAACCCGATTCTTCGCTTTCC
ACTTTATTTCTCCATTCATCATCGCAGCACTCGCTATAGTA
CACTTACTCTTCTCAGGACAGGATCCAACAACCCCAAC
AGGAATCCCATCGGACGCAGACAAAATCCCCTTCCATCCTT
ACTACACTATTAAGATATCCTGGGTATCTTACTTCTAATA
CTCTTCTAATATTACTAGTATTATTCGCACCAGACCTGCTT
GGAGATCCAGACAACTATAACCCAGCAAATCCACTCAACA
CACCCCTCATCAAAACCTGAATGATAYTTCTATTTGCA
TACGCAATCCTA
```

#### Mitochondrial 16S ribosomal RNA (16SrRNA)

Batch ID. BI180801

```
>RD119-F_16SrRNA
TGTTCTCTAAATAGGGACTTGTATGAATGGCCACACGAGG
GTTTTACTGTCTTACTTCCAATCAGTGAAATTGACCTTCC
CGTGAAGAGGGCGGGAATATATTAATAAGACGAGAAGACCC
TATGGAGCTTAACTACTTAGCCCAAAAGAAAACAAATTTT
ATTACTAAGGAAACAACAACACTCTTTATGGGCTAACAGC
TTTGGTTGGGGTGACCTCGGAGAACAAGAAATCCTCCGAG
CGATTTTAAAGACTAGACCTACAAGTCGAATCACACAATC
GTTTATTGATCCAAAAAATTGATCAACGGAACAAGTTAC
CCTAGGGATAACAGCGCAATCCTATTCAAGAGTCCATATC
GACAATAGGGTTTACGACCTCGATGTTGGATCAGGACATC
CCGATGGTGAACCGCTATCAAGGTTTCGTTTGTCAACGA
TTAAAGT
```

### Reference Detail

Description of reference material	Cornu Cervi Pantotrichum
Scientific name	<i>Cervus nippon</i> Temminck
Laboratory number	RD119
Sample mark	RD119-F
Locality	Hong Kong SAR, China (local market sample, imported from Jilin Province, China)
Authenticated	Yes

### Image



## Reference DNA Sequence

### Chinese Materia Medica (CMM)

#### DNA Information

#### Mitochondrial cytochrome c oxidase subunit I (COI)

Batch ID. BI180801

```
>RD117-A_COI
TACTCTGTATCTACTATTGGTGCCTGAGCAGGCATAGTAG
GAACAGCCTTAAGCCTACTGATTCGTGCCGAAC TGGGCCA
ACCTGGTACTCTGCTTGGAGATGATCAAATTTATAATGTTA
TCGTAACCGCACATGCATTTCGTAATAATTTCTTTATAGTT
ATACCAATTATAATCGGAGGATTTGGTAATTGACTAGTTCC
CCTAATAATTTGGTGCCTCAGACATAGCATTCCCTCGAATAA
ACAATATAAGCTTTTACTCCTCCCTCCTTCTTTACTACTAC
TTTTAGCATCATCTATAGTTGAAGCTGGCGCAGGAACAGG
CTGAAGTGTATATCCCCCTTAGCTGGCAACTTAGCTCACG
CAGGGGCTTCAGTAGACCTGACCATTTTTCTTTACACTTG
GCAGGTGTCTCCTCAATTCTAGGGGCCATTAAC TTTATTAC
AACAAATTATCAATATAAAACCCCTGCCATATCACAATATC
AAACCCCTCTATTTCGTGTGATCCCGTATTAGTCACTGCTGA
CTACTACTTCTCTACTCCCTGACTAGCAGCCGGAATCAC
AATACTATTAACAGACCCGAAACCTAAATACAACCTTTTTTT
ACCCAGCAGGAGGCGGAGATCCTATTCTATATCAACACTT
GTTC
```

#### Mitochondrial cytochrome b (CYTB)

Batch ID. BI180801

```
>RD117-A_CYTB
AGGAGCAACAGTCATCACCAACCTCCTCTCAGCAATTCCAT
ATATTGGCACAAAACCTAGTCGAATGAATCTGAGGAGGCTT
TTCAGTAGATAAAAGCAACCCTAACCCGATTCTTCGCTTTCC
ACTTTATTTCTCCATTCATCATCGCAGCACTCGCTATAGTA
CACTTACTCTTCTCAGGACAGGATCCAACAACCCCAAC
AGGAATCCCATCGGACGACAGACAAAATCCCTTCCATCCTT
ACTACACTATTAAGATATCCTGGGTATCTTACTTCTAATA
CTCTTCTAATATTACTAGTATTATTCGCACCAGACCTGCTT
GGAGATCCAGACAACTATAACCCAGCAAATCCACTCAACA
CACCCCTCACATCAAACCTGAATGATACTTCTATTTGCA
TACGCAATCCTA
```

#### Mitochondrial 16S ribosomal RNA (16SrRNA)

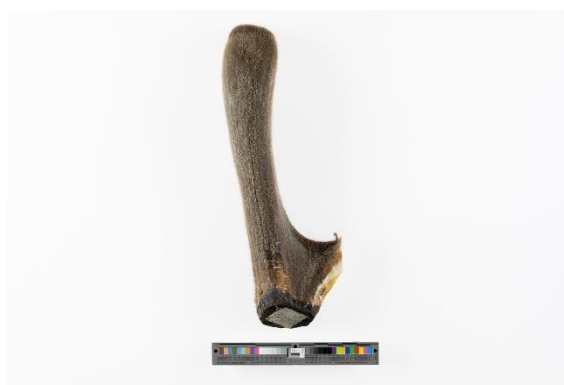
Batch ID. BI180801

```
>RD117-A_16SrRNA
TGTTCTCTAAATAGGGACTTGTATGAATGGCCACACGAGG
GTTTTACTGTCTTACTTCCAATCAGTGAAATTGACCTTCC
CGTGAAGAGGGCGGGAATATATTAATAAGACGAGAAGACCC
TATGGAGCTTAACTACTTAGCCCAAAGAAACAAAATTC
ATTACTAAGGAAACAACAACACTCTTTATGGGCTAACAGC
TTTGGTTGGGGTGACCTCGGAGAACAAAGAAATCCCTCCGAG
CGATTTTAAAGACTAGACCTACAAGTCGAATCACACAATC
GTTTATTGATCCAAAAAATTGATCAACGGAACAAGTTAC
CCTAGGGATAACAGCGCAATCCTATTCAAGAGTCCATATC
GACAATAGGGTTACGACCTCGATGTTGGATCAGGACATC
CCGATGGTGAACCGCTATCAAAGGTTCTGTTTGTCAACGA
TTAAAGT
```

#### Reference Detail

Description of reference material	Cornu Cervi Pantotrichum
Scientific name	<i>Cervus nippon</i> Temminck
Laboratory number	RD117
Sample mark	RD117-A
Locality	Hong Kong SAR, China (local market sample, imported from Jilin Province, China)
Authenticated	Yes

#### Image



## Reference DNA Sequence

### Chinese Materia Medica (CMM)

#### DNA Information

#### Mitochondrial cytochrome c oxidase subunit I (COI)

Batch ID. BI180801

```
>RD118-A_COI
TACTCTGTATCTACTATTGGTGCCTGAGCAGGCATAGTAG
GAACAGCCTTAAGCCTACTGATTCGTGCCGAAC TGGGCCA
ACCTGGTACTCTGCTTGGAGATGATCAAATTTATAATGTTA
TCGTAACCGCACATGCATTCGTAATAATTTCTTTATAGTT
ATACCAATTATAATCGGAGGATTTGGTAATTGACTAGTTCC
CCTAATAATTTGGTGCCTCAGACATAGCATTCCCTCGAATAA
ACAATATAAGCTTTTGACTCCTCCCTCCTTCTTTCTACTAC
TTTTAGCATCATCTATAGTTGAAGCTGGCGCAGGAACAGG
CTGAACTGTATATCCCCCTTAGCTGGCAACTTAGCTCACG
CAGGGGCTTCAGTAGACCTGACCATTTTTCTTTACACTTG
GCAGGTGTCTCCTCAATTCTAGGGGCCATTAAC TTTATTAC
AACAATTATCAATATAAAACCCCTGCCATATCACAATATC
AAACCCCTCTATTTCGTGTGATCCCGTATTAGTCACTGCTGA
CTACTACTTCTCTCACTCCCTGACTAGCAGCCGGAATCAC
AATACTATTAACAGACCGAAACCTAAATACAACCTTTTTTTG
ACCCAGCAGGAGGCGGAGATCCTATTCTATATCAACACTT
GTTC
```

#### Mitochondrial cytochrome b (CYTB)

Batch ID. BI180801

```
>RD118-A_CYTB
AGGAGCAACAGTCATCACCAACCTCCTCTCAGCAATTCCAT
ATATTGGCACAAAACCTAGTCGAATGAATCTGAGGAGGCTT
TTCAGTAGATAAAAGCAACCCTAACCCGATTCTTCGCTTTCC
ACTTTATTTCTCCATTCATCATCGCAGCACTCGCTATAGTA
CACTTACTTTCCTTCACGAGACAGGATCCAACAACCCAAC
AGGAATCCCATCGGACGCAGACAAAATCCCCTTCCATCCTT
ACTACACTATTAAGATATCCTGGGTATCTTACTTCTAATA
CTCTTCTAATATTACTAGTATTATTCGCACCAGACCTGCTT
GGAGATCCAGACAACTATAACCCAGCAAATCCACTCAACA
CACCCCTCACATCAAACCTGAATGATACTTCTATTTGCA
TAGCAATCCTA
```

#### Mitochondrial 16S ribosomal RNA (16SrRNA)

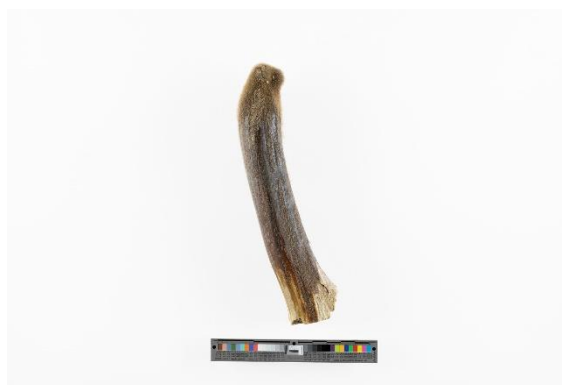
Batch ID. BI180801

```
>RD118-A_16SrRNA
TGTTCTCTAAATAGGGACTTGTATGAATGGCCACACGAGG
GTTTTACTGTCTTACTTCCAATCAGTGAAATTGACCTTCC
CGTGAAGAGGGCGGGAATATATTAATAAGACGAGAAGACCC
TATGGAGCTTTAACTACTTAGCCCAAAGAAACAAAATTC
ATTACTAAGGAAACAACAACACTCTTTATGGGCTAACAGC
TTTGGTTGGGGTGACCTCGGAGAACAAAGAAATCCTCCGAG
CGATTTTAAAGACTAGACCTACAAGTCGAATCACACAATC
GTTTATTGATCCAAAAAATGATCAACGGAACAAGTT
ACCCTAGGGATAACAGCGCAATCCTATTCAAGAGTCCATA
TCGACAATAGGGTTTACGACCTCGATGTTGGATCAGGACA
TCCCAGTGGTGCAACCGCTATCAAAGTTGCTTTGTTCAAC
GATTAAGT
```

#### Reference Detail

Description of reference material	Cornu Cervi Pantotrichum
Scientific name	<i>Cervus nippon</i> Temminck
Laboratory number	RD118
Sample mark	RD118-A
Locality	Hong Kong SAR, China (local market sample, imported from Heilongjiang Province, China)
Authenticated	Yes

#### Image



# Reference DNA Sequence

## Animal Part

### DNA Information

#### Mitochondrial cytochrome c oxidase subunit I (COI)

Batch ID. BI191203

```
>RD373-B_COI
TACTCTGTATCTACTATTGGTGCCTGAGCAGGCATAGTAG
GAACAGCCTTAAGCCTACTGATTCGTGCCGAAC TGGGCCA
ACCTGGTACTCTGCTTGGAGATGATCAAATTTATAATGTTA
TCGTAACCGCACATGCATTTCGTAATAATTTCTTTATAGTT
ATACCAATTATAATCGGAGGATTTGGTAATTGACTAGTTCC
CCTAATAATTTGGTGCCTCAGACATAGCATTCCCTCGAATAA
ACAATATAAGCTTTTGACTCCTCCCTCCTTCTTTACTAC
TTTTAGCATCATCTATAGTTGAAGCTGGCGCAGGAACAGG
CTGAACTGTATATCCCCCTTAGCTGGCAACTTAGCTCAGC
CAGGGGCTTCAGTAGACCTGACCATTTTTCTTTACACTTG
GCAGGTGTCTCCTCAATTCTAGGGGCCATTAAC TTTATTAC
AACAATTATCAATATAAAACCCCTGCCATATCACAATATC
AAACCCCTCTATTTCGTGTGATCCGTAATTAGTCACTGCTGA
CTACTACTTCTCTACTCCCTGACTAGCAGCCGGAATCAC
AATACTATTAACAGACCCGAAACCTAAATACAACCTTTTTTG
ACCCAGCAGGAGGCGGAGATCCTATTCTATATCAACACTT
GTTC
```

#### Mitochondrial cytochrome b (CYTB)

Batch ID. BI191203

```
>RD373-B_CYTB
AGGAGCAACAGTCATCACCAACCTCCTCTCAGCAATTCCAT
ATATTGGCACAAAACCTAGTCGAATGAATCTGAGGAGGCTT
TTCAGTAGATAAAAGCAACCCTAACCCGATTCTTCGCTTTCC
ACTTTATTTCTCCATTCATCATCGCAGCACTCGCTATAGTA
CACTTACTTTCTTTCACGAGACAGGATCCAACAACCCAAC
AGGAAATCCCATCGGACGACAGACAAAATCCCTTCCATCCTT
ACTACACTATAAAGATATCCTGGGTATCTTACTTCTAATA
CTCTTCTAATATTACTAGTATTATTCGCACCAGACCTGCTT
GGAGATCCAGACAACTATAACCCAGCAAAATCCACTCAACA
CACCCCTCACATCAAACCTGAATGATACTTCTATTGCA
TACGCAATCCTA
```

#### Mitochondrial 16S ribosomal RNA (16SrRNA)

Batch ID. BI191203

```
>RD373-B_16SrRNA
TGTTCTYTAAATAGGGACTTGTATGAATGGCCACACGAGG
GTTTTACTGTCTTACTTCCAATCAGTGAAATTGACCTTCC
CGTGAAGAGGGCGGGAATATATTAATAAGACGAGAAGACCC
TATGGAGCTTTAACTACTTAGCCCAAAAGAAAACAAATTC
ATTACTAAGGAAACAACAACACTCTTTATGGGCTAACAGC
TTTGGTTGGGGTGACCTCGGAGAACAAAGAAATCCCTCCGAG
CGATTTTAAAGACTAGACCTACAAGTCGAATCACACAATC
GTTTATTGATCCAAAAAATGATCAACGGAACAAGTT
ACCCTAGGGATAACAGCGCAATCCTATTCAAGAGTCCATA
TCGACAATAGGGTTTACGACCTCGATGTTGGATCAGGACA
TCCCAGTGGTGAACCGCTATCAAAGGTTCTGTTGTTCAAC
GATTAAGT
```

Remarks: observation at nucleotide position 7

### Reference Detail

Description of reference material	Hair of <i>C. nippon</i>
Scientific name	<i>Cervus nippon</i> Temminck
Laboratory number	RD373
Sample mark	RD373-B
Locality	Xingcheng, Liaoning Province, China
Authenticated	Yes
Remarks	16S: 7Y

### Image



## Reference DNA Sequence

### Animal Part

#### DNA Information

#### Mitochondrial cytochrome c oxidase subunit I (COI)

Batch ID. BI191203

```
>RD374-C_COI
TACTCTGTATCTACTATTGGTGCCTGAGCAGGCATAGTAG
GAACAGCCTTAAGCCTACTGATTCGTGCCGAAC TGGGCCA
ACCTGGTACTCTGCTTGGAGATGATCAAATTTATAATGTTA
TCGTAACCGCACATGCATTTCGTAATAATTTCTTTATAGTT
ATACCAATTATAATCGGAGGATTTGGTAATTGACTAGTTCC
CCTAATAATTTGGTGCCTCAGACATAGCATTCCCTCGAATAA
ACAATATAAGCTTTTGACTCCTCCCTCCTTCTTTACTACT
TTTTAGCATCATCTATAGTTGAAGCTGGCGCAGGAACAGG
CTGAACTGTATATCCCCCTTAGCTGGCAACTTAGCTCACG
CAGGGGCTTCAGTAGACTGACCATTTTTTCTTTACACTTG
GCAGGTGTCTCCTCAATTCTAGGGGCCATTAAC TTTATTAC
AACAATTATCAATATAAAACCCCTGCCATATCACAATATC
AAACCCCTCTATTTCGTGTGATCCGTATTAGTCACTGCTGA
CTACTACTTCTCTACTCCCTGACTAGCAGCCGGAATCAC
AATACTATTAACAGACCGAAACCTAAATACAACCTTTTTTT
ACCCAGCAGGAGCGGAGATCCTATTCTATATCAACACTT
GTTT
```

#### Mitochondrial cytochrome b (CYTB)

Batch ID. BI191203

```
>RD374-C_CYTB
AGGAGCAACAGTCATCACCAACCTCCTCTCAGCAATTCCAT
ATATTGGCACAAAACCTAGTCGAATGAATCTGAGGAGGCTT
TTCAGTAGATAAAGCAACCCTAACCCGATTCTTCGCTTTCC
ACTTTATTTCTCCATTCATCATCGCAGCACTCGCTATAGTA
CACTTACTTTCCTTCACGAGACAGGATCCAACAACCCAAC
AGGAATCCCATCGGACGCAGACAAAATCCCCTTCCATCCTT
ACTACACTATAAAGATATCCTGGGTATCTTACTTCTAATA
CTCTTCTAATATTACTAGTATTATTCGCACCAGACCTGCTT
GGAGATCCAGACAACTATAACCCAGCAAAATCCACTCAACA
CACCCCTCACATCAAACCTGAATGATACTTCTATTGCA
TAGCAATCCTA
```

#### Mitochondrial 16S ribosomal RNA (16SrRNA)

Batch ID. BI191203

```
>RD374-C_16SrRNA
TGTTYTYTAAATAGGGACTTGTATGAATGGCCMCMCGAGG
GTTTTACTGTCTTACTTCCAATCAGTGAAATTGACCTTCC
CGTGAAGAGGGCGGGAATATATTAATAAGACGAGAAGACCC
TATGGAGCTTAACTACTTAGCCAAAAGAAAACAAATTTT
ATTACTAAGGAAACAACAACACTCTTTATGGGCTAACAGC
TTTGGTTGGGGTGACCTCGGAGAACAAAGAAATCCTCCGAG
CGATTTTAAAGACTAGACCTACAAGTCGAATCACACAATC
GTTTATTGATCCAAAAAATAATGATCAACGGAACAAGT
TACCCTAGGGATAACAGCGCAATCCTATTCAAGAGTCCAT
ATCGACAATAGGGTTTACGACCTCGATGTTGGATCAGGAC
ATCCCGATGGKGAACCGCTATCAAAGGTTTCGTTTGTCAA
CGATTAAGT
```

Remarks: observations at nucleotide positions 5, 7, 33, 35 and 413

### Reference Detail

Description of reference material	Hair of <i>C. nippon</i>
Scientific name	<i>Cervus nippon</i> Temminck
Laboratory number	RD374
Sample mark	RD374-C
Locality	Xingcheng, Liaoning Province, China
Authenticated	Yes
Remarks	16S: 5Y, 7Y, 33M, 35M, 413K

### Image



## Reference DNA Sequence

### Animal Part

#### DNA Information

#### Mitochondrial cytochrome c oxidase subunit I (COI)

Batch ID. BI191203

```
>RD376-B_COI
TACTCTGTATCTACTATTGGTGCCTGAGCAGGCATAGTAG
GAACAGCCTTAAGCCTACTGATTCGTGCCGAAC TGGGCCA
ACCTGGTACTCTGCTTGGAGATGATCAAATTTATAATGTTA
TCGTAACCGCACATGCATTCTGTAATAATTTCTTTATAGTT
ATACCAATTATAATCGGAGGATTTGGTAATTGACTAGTTCC
CCTAATAATTGGTGGCCAGACATAGCATTCCCTCGAATAA
ACAATATAAGCTTTTGACTCCTCCCTCCTTCTTTCTTACTAC
TTTTAGCATCATCTATAGTTGAAGCTGGCGCAGGAACAGG
CTGAACTGTATATCCCCCTTAGCTGGCAACTTAGCTCACG
CAGGGGCTTCAGTAGACCTGACCATTTTTTCTTTACACTTG
GCAGGTGTCTCCTCAATTCTAGGGGCCATTAAC TTTATTAC
AACAATTATCAATATAAAACCCCTGCCATATCACAATATC
AAACCCCTCTATTTCGTGTGATCCGTAATTAGTCACTGCTGA
CTACTACTTCTCTACTCCCTGACTAGCAGCCGGAATCAC
AATACTATTAACAGACCCGAAACCTAAATACAACCTTTTTTT
ACCCAGCAGGAGGCGGAGATCCTATTCTATATCAACACTT
GTTT
```

#### Mitochondrial cytochrome b (CYTB)

Batch ID. BI191203

```
>RD376-B_CYTB
AGGAGCAACAGTCATCACCAACCTCCTCTCAGCAATTCCAT
ATATTGGCACAAAACCTAGTCGAATGAATCTGAGGAGGCTT
TTCAGTAGATAAAGCAACCCTAACCCGATTCTTCGCTTTCC
ACTTTATTTCTCCATTCATCATCGCAGCACTCGCTATAGTA
CACTTACTCTTCTCAGGACAGGATCCAACAACCCCAAC
AGGAAATCCCATCGGACGCAGACAAAATCCCCTTCCATCCTT
ACTACACTATTAAGATATCCTGGGTATCTTACTTCTAATA
CTCTTCTAATATTACTAGTATTATTCGCACCAGACCTGCTT
GGAGATCCAGACAACCTATAACCCAGCAAATCCACTCAACA
CACCCCTCACATCAAACCTGAATGATACTTCTATTGCA
TACGCAATCCTA
```

#### Mitochondrial 16S ribosomal RNA (16SrRNA)

Batch ID. BI191203

```
>RD376-B_16SrRNA
TGTTCTCTAAATAGGGACTTGTATGAATGGCCACACGAGG
GTTTTACTGTCTTACTTCCAATCAGTGAAATTGACCTTCC
CGTGAAGAGGCGGGAATATATTAATAAGACGAGAAGACCC
TATGGAGCTTAACTACTTAGCCCAAAGAAACAAAATTC
ATTACTAAGGAAACAACAACACTCTTTATGGGCTAACAGC
TTTGGTTGGGGTGACCTCGGAGAACAAAGAAATCCTCCGAG
CGATTTTAAAGACTAGACCTACAAGTCGAATCACACAATC
GTTTATTGATCCAAAAAATGATCAACGGAACAAGTTAC
CCTAGGGATAACAGCGCAATCCTATTCAAGAGTCCATATC
GACAATAGGGTTTACGACCTCGATGTTGGATCAGGACATC
CCGATGGTGAACCGCTATCAAAGGTTCTGTTTGTCAACGA
TTAAAGT
```

### Reference Detail

Description of reference material	Hair of <i>C. nippon</i>
Scientific name	<i>Cervus nippon</i> Temminck
Laboratory number	RD376
Sample mark	RD376-B
Locality	Shuangyang, Jilin Province, China
Authenticated	Yes

### Image





## Reference DNA Sequence

### Animal Part

#### DNA Information

#### Mitochondrial cytochrome c oxidase subunit I (COI)

Batch ID. BI191203

```
>RD377-B_COI
TACTCTGTATCTACTGTTTGGTGCCTGAGCAGGCATAGTAG
GAACAGCCTTAAGCCTACTGATTCGTGCCGAAC TGGGCCA
ACCCGGTACTCTGCTTGGAGATGACCAAATTTATAATGTTA
TCGTAACCGCACATGCATTCTGTAATAATTTTCTTTATAGTT
ATACCAATTATAATTGGAGGGTTTGGTAATTGACTAGTCCC
CCTAATAATTGGTGCCTCAGACATAGCATTCCCTCGAATAA
ATAATATAAGCTTCTGACTCCTCCCTCCTTCTTTCTTACTAC
TTTTAGCATCATCCATAGTTGAAGCTGGCGCAGGAACAGG
CTGAAGTGTATATCCCCCTTAGCTGGCAACTTAGCTCACG
CAGGGGCTTCAGTAGACCTGACCATTTTTTCTTTACACTTA
GCAGGTGTCTCCTCAATTCTAGGGGCCATTAAC TTTATTAC
AACAATTATCAATATAAAACCCCTGCCATATCACAATATC
AAACCCCTCTATTTCGTGTGATCCGTAATTAGTCACTGCTGTA
CTACTACTTCTCTACTCCCTGACTAGCAGCCGGAATTAC
AATACTATTAACAGACCGAAACCTAAATACAACCTTTTTTTG
ACCCAGCAGGAGGCGGAGATCCTATTCTATATCAACACTT
GTTC
```

#### Mitochondrial cytochrome b (CYTB)

Batch ID. BI191203

```
>RD377-B_CYTB
AGGAGCAACAGTCATCACCAACCTCCTCTCAGCAATTCCAT
ACATTGGCACAAAACCTAGTCGAATGAATCTGAGGGGGCTT
TTCAGTAGATAAAGCAACCCTGACCCGATTTTTCGCTTTCC
ACTTTATTTCTCCATTCATCATCGCAGCACTCGCTATAGTA
CACTTACTCTTCTCAGGACAGGATCCAATAACCCAAC
AGGAATCCCATCGGACGCAGACAAAATCCCTTCCATCCTT
ACTATACTATTAAGATATCTTAGGCATCTTACTTCTAATA
CTCTTCTAATATTACTAGTACTATTCGACCCAGACCTGCT
TGGAGACCCAGACAACTATACCCAGCAAATCCACTCAAC
ACACCCCTCACATCAAACCCGAATGATACTTCTATTGTC
ATACGCAATCCTA
```

#### Mitochondrial 16S ribosomal RNA (16SrRNA)

Batch ID. BI191203

```
>RD377-B_16SrRNA
TGTTCTCTAAATAGGGACTTGTATGAATGGCCACACGAGG
GTTTTACTGTCTTACTTCCAATCAGTGAAATTGACCTTCC
CGTGAAGAGGGCGGGAATATATTAATAAGACGAGAAGACCC
TATGGAGCTTAACTACTTAGCCAAAAGAAAACAAATTTT
ACTACTAAGGAAACAACAACACTCTTTATGGGCTAACAGC
TTTGGTTGGGGTGACCTCGGAGAACAAAGAAATCCTCCGAG
CGATTTTAAAGACTAGACCTACAAGTCGAATCACACAATC
GTTTATTGATCCAAAAAATTGATCAACGGAACAAGTTACC
CTAGGGATAACAGCGCAATCCTATTCAAGAGTCCATATCG
ACAATAGGGTTTACGACCTCGATGTTGGATCAGGACATCC
CGATGGTGCAACCGCTATCAAAGTTCTGTTTGTCAACGAT
TAAAGT
```

### Reference Detail

Description of reference material	Hair of <i>C. nippon</i>
Scientific name	<i>Cervus nippon</i> Temminck
Laboratory number	RD377
Sample mark	RD377-B
Locality	Shuangyang, Jilin Province, China
Authenticated	Yes

### Image



## Reference DNA Sequence

### Animal Part

#### DNA Information

#### Mitochondrial cytochrome c oxidase subunit I (COI)

Batch ID. BI191203

```
>RD378-C_COI
TACTCTGTACTACTATTGGTGCCTGAGCAGGCATAGTAG
GAACAGCCTTAAGCCTACTGATTCGTGCCGAAC TGGGCCA
ACCTGGTACTCTGCTTGGAGATGATCAAATTTATAATGTTA
TCGTAACCGCACATGCATTTCGTAATAATTTTCTTTATAGTT
ATACCAATTATAATCGGAGGATTTGGTAATTGACTAGTTCC
CCTAATAATTTGGTGCCTCCAGACATAGCATTCCCTCGAATAA
ACAATATAAGCTTTTGACTCCTCCCTCCTTCTTTACTACTAC
TTTTAGCATCATCTATAGTTGAAGCTGGCGCAGGAACAGG
CTGAACTGTATATCCCCCTTAGCTGGCAACTTAGCTCACG
CAGGGGCTTCAGTAGACTGACCATTTTTTCTTTACACTTG
GCAGGTGTCTCCTCAATTCTAGGGGCCATTAAC TTTATTAC
AACAAATTATCAATATAAAACCCCTGCCATATCACAATATC
AAACCCCTCTATTTCGTGTGATCCGTAATTAGTCACTGCTGTA
CTACTACTTCTCTACTCCCTGACTAGCAGCCGGAATCAC
AATACTATTAACAGACCGAAACCTAAATACAACCTTTTTTTG
ACCCAGCAGGAGGCGGAGATCCTATTCTATATCAACACTT
GTTC
```

#### Mitochondrial cytochrome b (CYTB)

Batch ID. BI191203

```
>RD378-C_CYTB
AGGAGCAACAGTCATCACCAACCTCCTCTCAGCAATTCCAT
ATATTGGCACAAAACCTAGTCGAATGAATCTGAGGAGGCTT
TTCAGTAGATAAAGCAACCCTAACCCGATTCTTCGCTTTCC
ACTTTATTCTTCCATTCATCATCGCAGCACTCGCTATAGTA
CACTTACTCTTCTCAGGACAGGATCCAACAACCCCAAC
AGGAATCCCATCGGACGCAGACAAAATCCCTTCCATCCTT
ACTACACTATAAAGATATCCTGGGTATCTTACTTCTAATA
CTCTTCTAATATTACTAGTATTATTCGCACCAGACCTGCTT
GGAGATCCAGACAACTATAACCCAGCAAAATCCACTCAACA
CACCCCTCACATCAAACCTGAATGATACTTCTATTGCA
TACGCAATCCTA
```

#### Mitochondrial 16S ribosomal RNA (16SrRNA)

Batch ID. BI191203

```
>RD378-C_16SrRNA
TGTTYTYTAAATAGGGACTTGTATGAATGGCCMCMCGAGG
GTTTTACTGYTYTTACTTCCAATCAGTGAAATTGACCTTC
CCGTGAAGAGGGCGGGAATATATTAATAAGACGAGAAGACC
CTATGGAGCTTAACTACTTAGCCAAAAGAAAACAAATTTCT
ATTACTAAGGAAACAACAACACTCTTTATGGGCTAACAGC
TTTGGTTGGGGTGACCTCGGAGAACAAAGAAATCCTCCGAG
CGATTTTAAAGACTAGACCTACAAGTCGAATCACACAATC
GTTTATTGATCCAAAAAATAATGATCAACGGAACAAGT
TACCCTAGGGATAACAGCGCAATCCTATTCAAGAGTCCAT
ATCGACAATAGGGTTTACGACCTCGATGTTGGATCAGGAC
ATCCCGATGGKGAACCGCTATCAAAGGTTCTGTTTGTCAA
CGATTAAGT
```

Remarks: observations at nucleotide positions 5, 7, 33, 35, 51, 53 and 413

### Reference Detail

Description of reference material	Hair of <i>C. nippon</i>
Scientific name	<i>Cervus nippon</i> Temminck
Laboratory number	RD378
Sample mark	RD378-C
Locality	Shuangyang, Jilin Province, China
Authenticated	Yes
Remarks	16S: 5Y, 7Y, 33M, 35M, 51Y, 53Y, 413K

### Image





## Reference DNA Sequence

### Animal Part

#### DNA Information

#### Mitochondrial cytochrome c oxidase subunit I (COI)

Batch ID. BI191203-2

```
>RD381-C_COI
TACTCTGTACTACTATTTGGTGCCTGAGCAGGCATAGTAG
GAACAGCCTTAAGCCTACTGATTCGTGCCGAAC TGGGCCA
ACCTGGTACTCTGCTTGGAGATGATCAAATTTATAATGTTA
TCGTAACCGCACATGCATTTCGTAATAATTTCTTTATAGTT
ATACCAATTATAATCGGAGGATTTGGTAATTGACTAGTTCC
CCTAATAATTTGGTGCCTCAGACATAGCATTCCCTCGAATAA
ACAATATAAGCTTTTACTCTCCCTCCTTCTTTACTACTAC
TTTTAGCATCATCTATAGTTGAAGCTGGCGCAGGAACAGG
CTGAACTGTATATCCCCCTTAGCTGGCAACTTAGCTCACG
CAGGGGCTTCAGTAGACCTGACCATTTTTCTTTACACTTG
GCAGGTGTCTCTCAATTCTAGGGGCCATTAAC TTTATTAC
AACAATTATCAATATAAAACCCCTGCCATATCACAATATC
AAACCCCTCTATTTCGTGTGATCCGTAATTAGTCACTGCTGTA
CTACTACTTCTCTACTCCCTGTAAGCAGCCGGAATCAC
AATACTATTAACAGACCCGAAACCTAAATACAACCTTTTTTG
ACCCAGCAGGAGGCGGAGATCCTATTCTATATCAACACTT
GTTT
```

#### Mitochondrial cytochrome b (CYTB)

Batch ID. BI191203-2

```
>RD381-C_CYTB
AGGAGCAACAGTCATCACCAACCTCCTCTCAGCAATTCCAT
ATATTGGCACAAAACCTAGTCGAATGAATCTGAGGAGGCTT
TTCAGTAGATAAAGCAACCCTAACCCGATTCTTCGCTTTCC
ACTTTATTTCTCCATTCATCATCGCAGCACTCGCTATAGTA
CACTTACTCTTCTCAGGACAGGATCCAACAACCCCAAC
AGGAATCCCATCGGACGCAGACAAAATCCCTTCCATCCTT
ACTACACTATTAAGATATCCTGGGTATCTTACTTCTAATA
CTCTTCTAATATTACTAGTATTATTCGCACCAGACCTGCTT
GGAGATCCAGACAACTATAACCCAGCAAAATCCACTCAACA
CACCCCTCACATCAAACCTGAATGATACTTCTATTGCA
TACGCAATCCTA
```

#### Mitochondrial 16S ribosomal RNA (16SrRNA)

Batch ID. BI191203-2

```
>RD381-C_16SrRNA
TGTTCTCTAAATAGGGACTTGTATGAATGGCCACACGAGG
GTTTTACTGTCTYTTACTTCCAATCAGTGAAATTGACCTTCC
CGTGAAGAGGGCGGGAATATATTAATAAGACGAGAAGACCC
TATGGAGCTTTAACTACTTAGCCCAAAAGAAAACAAATTTT
ATTACTAAGGAAACAACAACACTCTTTATGGGCTAACAGC
TTTGGTTGGGGTGACCTCGGAGAACAAAGAAATCCCTCCGAG
CGATTTTAAAGACTAGACCTACAAGTCGAATCACACAATC
GTTTATTGATCCAAAAAATGATCAACGGAACAAGTT
ACCCTAGGGATAACAGCGCAATCCTATTCAAGAGTCCATA
TCGACAATAGGGTTTACGACCTCGATGTTGGATCAGGACA
TCCCAGTGGTGAACCGCTATCAAAGTTCTGTTTGTCAAC
GATTAAGT
```

Remarks: observation at nucleotide position 53

### Reference Detail

Description of reference material	Hair of <i>C. nippon</i>
Scientific name	<i>Cervus nippon</i> Temminck
Laboratory number	RD381
Sample mark	RD381-C
Locality	Xiuying, Hainan Province, China
Authenticated	Yes
Remarks	16S: 53Y

### Image



## Reference DNA Sequence

### Animal Part

#### DNA Information

#### Mitochondrial cytochrome c oxidase subunit I (COI)

Batch ID. BI191203-2

```
>RD382-C_COI
TACTCTGTACTACTATTGGTGCCTGAGCAGGCATAGTAG
GAACAGCCTTAAGCCTACTGATTCGTGCCGAAC TGGGCCA
ACCTGGTACTCTGCTTGGAGATGATCAAATTTATAATGTTA
TCGTAACCGCACATGCATTTCGTAATAATTTTCTTTATAGTT
ATACCAATTATAATCGGAGGATTTGGTAATTGACTAGTTCC
CCTAATAATTGGTGCCTCCAGACATAGCATTCCCTCGAATAA
ACAATAAAGCTTTTGACTCCTCCCTCCTTCTTTCTACTAC
TTTTAGCATCATCTATAGTTGAAGCTGGCGCAGGAACAGG
CTGAACTGTATATCCCCCTTAGCTGGCAACTTAGCTCACG
CAGGGGCTTCAGTAGACTGACCATTTTTTCTTTACACTTG
GCAGGTGTCTCCTCAATTCTAGGGGCCATTAAC TTTATTAC
AACAAATTATCAATATAAAACCCCTGCCATATCACAATATC
AAACCCCTCTATTTCGTGTGATCCGTAATTAGTCACTGCTGTA
CTACTACTTCTCTCACTCCCTGTAAGCAGCCGGAATCAC
AATACTATTAACAGACCGAAACCTAAATACAACCTTTTTTTG
ACCCAGCAGGAGGCGGAGATCCTATTCTATATCAACACTT
GTTCC
```

#### Mitochondrial cytochrome b (CYTB)

Batch ID. BI191203-2

```
>RD382-C_CYTB
AGGAGCAACAGTCATCACCAACCTCCTCTCAGCAATTCCAT
ATATTGGCACAAAACCTAGTCGAATGAATCTGAGGAGGCTT
TTCAGTAGATAAAGCAACCCTAACCCGATTCTTCGCTTTCC
ACTTTATTTCTCCATTCATCATCGCAGCACTCGCTATAGTA
CACTTACTTTCCTTCACGAGACAGGATCCAACAACCCCAAC
AGGAATCCCATCGGACGCAGACAAAATCCCTTCCATCCTT
ACTACACTATTAAGATATCCTGGGTATCTTACTTCTAATA
CTCTTCTAATATTACTAGTATTATTCGCACCAGACCTGCTT
GGAGATCCAGACAACTATAACCCAGCAAAATCCACTCAACA
CACCCCTCACATCAAACCTGAATGATACTTCTATTTTGCA
TACGCAATCCTA
```

#### Mitochondrial 16S ribosomal RNA (16SrRNA)

Batch ID. BI191203-2

```
>RD382-C_16SrRNA
TGTTYTYTAAATAGGGACTTGTATGAATGGCCMCMCGAGG
GTTTTACTGYTYTTACTTCCAATCAGTGAAATTGACCTTC
CCGTGAAGAGGGCGGGAATATATTAATAAGACGAGAAGACC
CTATGGAGCTTAACTACTTAGCCAAAAGAAAACAAATTTCC
ATTACTAAGGAAACAACAACACTCTTTATGGGCTAACAGC
TTTGGTTGGGGTGACCTCGGAGAACAAAGAAATCCTCCGAG
CGATTTTAAAGACTAGACCTACAAGTCGAATCACACAATC
GTTTATTGATCCAAAAAATAATTGATCAACGGAACAAGT
TACCCTAGGGATAACAGCGCAATCCTATTCAAGAGTCCAT
ATCGACAATAGGGTTTACGACCTCGATGTTGGATCAGGAC
ATCCCGATGGKGAACCGCTATCAAAGGTTTCGTTTGTCAA
CGATTAAGT
```

Remarks: observations at nucleotide positions 5, 7, 33, 35, 51, 53 and 413

### Reference Detail

Description of reference material	Hair of <i>C. nippon</i>
Scientific name	<i>Cervus nippon</i> Temminck
Laboratory number	RD382
Sample mark	RD382-C
Locality	Xiuying, Hainan Province, China
Authenticated	Yes
Remarks	16S: 5Y, 7Y, 33M, 35M, 51Y, 53Y, 413K

### Image



## Reference DNA Sequence

### Animal Part

#### DNA Information

#### Mitochondrial cytochrome c oxidase subunit I (COI)

Batch ID. BI191213

```
>RD416-B_COI
TACTCTGTATCTACTATTGGTGCCTGAGCAGGCATAGTAG
GAACAGCCTTAAGCCTACTGATTCGTGCCGAAC TGGGCCA
ACCCGGTACTCTGCTTGGAGATGACCAAATTTATAATGTTA
TCGTAACCGCACATGCATTTGTAATAATTTCTTTATAGTT
ATACCAATTATAATTGGAGGATTTGGTAATTGACTAGTTCC
CCTAATAATTGGTGCCTCAGACATAGCATTCCCTCGAATAA
ATAATATAAGCTTTTGACTCCTCCCTCCTTCTTTCTTACTAC
TTTTAGCATCATCTATAGTTGAAGCTGGCGCAGGAACAGG
CTGAACTGTATATCCCTCCTAGCTGGCAACTTAGCTCACG
CAGGGGCTTCAGTAGACCTGACCATTTTTCTTTACACTTA
GCAGGTGTCTCCTCAATTCTAGGGGCCATTAAC TTTATTAC
AACAATTATCAATATAAAACCCCTGCCATATCACAATATC
AAACCCCTTTATTTCGTGTGATCCGTAATTAGTCACTGTGTA
CTACTACTTCTCTACTCCCTGTAAGCAGCCGGAATTAC
AATACTATTAACAGACCCGAAACCTAAATACAACCTTTTTTG
ACCCAGCAGGAGGCGGAGATCCTATTCTATATCAACACTT
GTTT
```

#### Mitochondrial cytochrome b (CYTB)

Batch ID. BI191213

```
>RD416-B_CYTB
AGGAGCAACAGTCATCACCAACCTCCTCTCAGCAATTCCAT
ACATTGGCACAAACCTAGTCGAATGAATCTGAGGGGGCTT
TTCAGTAGATAAAAGCAACCCTAACCCGATTTTTCGCTTTCC
ACTTTATTTTCCATTCATCATCGCAGCACTCGTATAGTAC
ATTTACTCTTCTTCACGAGACAGGATCCAACAACCCAACA
GGAATCCCATCGGACGACAGACAAAATCCCTTCCATCCTTA
CTATACTATCAAAGATATCTTAGGCATCTTACTTCTAATAC
TCTTCTAATATACTAGTATTATTCGCACCAGACCTGCTT
GGAGATCCAGACAACTATAACCCAGCAAAATCCACTCAGCA
CACCCCTCACATCAAACCCGAATGATACTTCTATTGCA
TACGCAATCCTA
```

#### Mitochondrial 16S ribosomal RNA (16SrRNA)

Batch ID. BI191213

```
>RD416-B_16SrRNA
TGTTCTCTAAATAGGGACTTGTATGAATGGCCACACGAGG
GTTTTACTGTCTTACTTCCAATCAGTGAAATTGACCTTCC
CGTGAAGAGGGCGGAATATATTAATAAGACGAGAAGACCC
TATGGAGCTTAACTACTTAGCCAAAAGAAAACAAATTC
ATTACTAAGGAAACAACAACACTCTTTATGGGCTAACAGC
TTTGGTTGGGGTGACCTCGGAGAACAAAGAAATCCTCCGAG
CGATTTTAAAGACTAGACCTACAAGTCGAATCACACAATC
GTTTATTGATCCAAAAAATTGATCAACGGAACAAGTTACC
CTAGGGATAACAGCGCAATCCTATTCAAGAGTCCATATCG
ACAATAGGGTTTACGACCTCGATGTTGGATCAGGACATCC
CGATGGTGCAACCGCTATCAAAGTTCTGTTTGTCAACGAT
TAAAGT
```

### Reference Detail

Description of reference material	Hair of <i>C. nippon</i>
Scientific name	<i>Cervus nippon</i> Temminck
Laboratory number	RD416
Sample mark	RD416-B
Locality	Changhua, Taiwan Province, China
Authenticated	Yes

### Image



## Reference DNA Sequence

### Animal Part

#### DNA Information

#### Mitochondrial cytochrome c oxidase subunit I (COI)

Batch ID. BI191213

```
>RD417-B_COI
TACTCTGTATCTACTATTGGTGCCTGAGCAGGCATAGTAG
GAACAGCCTTAAGCCTACTGATTCGTGCCGAAC TGGGCCA
ACCCGGTACTCTGCTTGGAGATGACCAAATTTATAATGTTA
TCGTAACCGCACATGCATTTGTAATAATTTCTTTATAGTT
ATACCAATTATAATTGGAGGATTTGGTAATTGACTAGTTCC
CCTAATAATTGGTGCCTCAGACATAGCATTCCCTCGAATAA
ATAATATAAGCTTTTGACTCCTCCCTCCTTCTTTCTTACTAC
TTTTAGCATCATCTATAGTTGAAGCTGGCGCAGGAACAGG
CTGAACTGTATATCCCCCTTAGCTGGCAACTTAGCTCACG
CAGGGGCTTCAGTAGACCTGACCATTTTTTCTTTACACTTA
GCAGGTGTCTCCTCAATTCTAGGGGCCATTAAC TTTATTAC
AACAATTATCAATATAAAACCCCTGCCATATCACAATATC
AAACCCCTTTATTTCGTGTGATCCGTATTAGTCACTGTGTA
CTACTACTTCTCTACTCCCTGTACTAGCAGCCGGAATTAC
AATACTATTAACAGACCGAAACCTAAATACAACCTTTTTTG
ACCCAGCAGGAGGCGGAGATCCTATTCTATATCAACACTT
GTTCC
```

#### Mitochondrial cytochrome b (CYTB)

Batch ID. BI191213

```
>RD417-B_CYTB
AGGAGCAACAGTCATCACCAACCTCCTCTCAGCAATTCCAT
ACATTGGCACAAAACCTAGTCGAATGAATCTGAGGGGCTT
TTCAGTAGATAAAAGCAACCCTAACCCGATTTTTCGCTTTCC
ACTTTATTTTCCATTCATCATCGCAGCACTCGTATAGTAC
ATTTACTCTTCTTCACGAGACAGGATCCAACAACCCAACA
GGAATCCCATCGGACGCGAGACAAAATCCCTTCCATCCTTA
CTATACTATCAAAGATATCTTAGGCATCTTACTTCTAATAC
TCTTCTAATATACTAGTATTATTCGCACCAGACCTGCTT
GGAGATCCAGACAACTATAACCCAGCAAATCCACTCAGCA
CACCCCTCACATCAAACCCGAATGATACTTCTATTGCA
TACGCAATCCTA
```

#### Mitochondrial 16S ribosomal RNA (16SrRNA)

Batch ID. BI191213

```
>RD417-B_16SrRNA
TGTTCTCTAAATAGGGACTTGTATGAATGGCCACACGAGG
GTTTTACTGTCTTACTTCCAATCAGTGAAATTGACCTTCC
CGTGAAGAGGGCGGGAATATATTAATAAGACGAGAAGACCC
TATGGAGCTTAACTACTTAGCCAAAAGAAAACAAATTTT
ATTACTAAGGAAACAACAACACTCTTTATGGGCTAACAGC
TTTGGTTGGGGTGACCTCGGAGAACAAAGAAATCCTCCGAG
CGATTTTAAAGACTAGACCTACAAGTCGAATCACACAATC
GTTTATTGATCCAAAAAATTGATCAACGGAACAAGTTACC
CTAGGGATAACAGCGCAATCCTATTCAAGAGTCCATATCG
ACAATAGGGTTTACGACCTCGATGTTGGATCAGGACATCC
CGATGGTGCAACCGCTATCAAAGTTGTTTGTTCACAGAT
TAAAGT
```

### Reference Detail

Description of reference material	Hair of <i>C. nippon</i>
Scientific name	<i>Cervus nippon</i> Temminck
Laboratory number	RD417
Sample mark	RD417-B
Locality	Changhua, Taiwan Province, China
Authenticated	Yes

### Image



# Reference DNA Sequence

## Animal Part

### DNA Information

#### Mitochondrial cytochrome c oxidase subunit I (COI)

Batch ID. BI191213

```
>RD418-B_COI
TACTCTGTATCTACTATTGGTGCCTGAGCAGGCATAGTAG
GAACAGCCTTAAGCCTACTGATTCGTGCCGAAC TGGGCCA
ACCCGGTACTCTGCTTGGAGATGACCAAATTTATAATGTTA
TCGTAACCGCACATGCATTTGTAATAATTTCTTTATAGTT
ATACCAATTATAATTGGAGGATTTGGTAATTGACTAGTTCC
CCTAATAATTGGTGCCTCAGACATAGCATTCCCTCGAATAA
ATAATATAAGCTTTTGACTCCTCCCTCCTTCTTTCTTACTAC
TTTTAGCATCATCTATAGTTGAAGCTGGCGCAGGAACAGG
CTGAACTGTATATCCCCCTTAGCTGGCAACTTAGCTCACG
CAGGGGCTTCAGTAGACCTGACCATTTTTCTTTACACTTA
GCAGGTGTCTCCTCAATTCTAGGGGCCATTAAC TTTATTAC
AACAATTATCAATATAAAACCCCTGCCATATCACAATATC
AAACCCCTTTATTTCGTGTGATCCGTATTAGTCACTGTGTA
CTACTACTTCTCTACTCCCTGACTAGCAGCCGGAATTAC
AATACTATTAACAGACCCGAAACCTAAATACAACCTTTTTTG
ACCCAGCAGGAGCGGAGATCCTATTCTATATCAACACTT
GTTC
```

#### Mitochondrial cytochrome b (CYTB)

Batch ID. BI191213

```
>RD418-B_CYTB
AGGAGCAACAGTCATCACCAACCTCCTCTCAGCAATTCCAT
ACATTGGCACAAACCTAGTCGAATGAACTGAGGGGGCTT
TTCAGTAGATAAAGCAACCCTAACCCGATTTTTCGCTTTCC
ACTTTATTTTTCCATTCATCATCGCAGCACTCGTATAGTAC
ATTTACTTCTCCTTCAGGACAGGATCCAACAACCCAACA
GGAATCCCATCGGACGCAGACAAAAATCCCTTCCATCCTTA
CTATACTATCAAAGATATCTTAGGCATCTTACTTCTAATAC
TCTTCTAATATTAAGTATTATTTCGCACCAGACCTGCTT
GGAGATCCAGACAACTATAACCCAGCAAATCCACTCAGCA
CACCCCTCACATCAAACCCGAATGATACTTCTATTGCA
TACGCAATCCTA
```

#### Mitochondrial 16S ribosomal RNA (16SrRNA)

Batch ID. BI191213

```
>RD418-B_16SrRNA
TGTTCTCTAAATAGGGACTTGTATGAATGGCCACACGAGG
GTTTTACTGTCTTACTTCCAATCAGTGAAATTGACCTTCC
CGTGAAGAGGGCGGAATATATTAATAAGACGAGAAGACCC
TATGGAGCTTTAACTACTTAGCCAAAAAGAAACAAATTC
ATTACTAAGGAAACAACAACACTCTTTATGGGCTAACAGC
TTTGGTTGGGGTGACCTCGGAGAACAAAGAAATCCTCCGAG
CGATTTTAAAGACTAGACCTACAAGTCGAATCACACAATC
GTTTATTGATCCAAAAAATTGATCAACGGAACAAGTTACC
CTAGGGATAACAGCGCAATCCTATTCAAGAGTCCATATCG
ACAATAGGGTTTACGACCTCGATGTTGGATCAGGACATCC
CGATGGTGCAACCGCTATCAAAGGTTGTTTGTTCACGAT
TAAAGT
```

### Reference Detail

Description of reference material	Hair of <i>C. nippon</i>
Scientific name	<i>Cervus nippon</i> Temminck
Laboratory number	RD418
Sample mark	RD418-B
Locality	Changhua, Taiwan Province, China
Authenticated	Yes

### Image



## Reference DNA sequences in FASTA format

Partial mitochondrial cytochrome c oxidase subunit I (COI) of authenticated parts of *Cervus nippon* and Cornu Cervi Pantotrichum (*C. nippon*)

>RD351-1B\_COI

TACTCTGTATCTACTATTTGGTGCCTGAGCAGGCATAGTAGGAACAGCCTTAAGCCTACTGATTCGTGCCGAACCTGGGCCAAC  
CTGGTACTCTGCTTGGAGATGATCAAATTTATAATGTTATCGTAACCGCACATGCATTTCGTAATAATTTTCTTTATAGTTATAC  
CAATTATAATCGGAGGATTTGGTAATTGACTAGTTCGCCCTAATAAATTTGGTGCCCCAGACATAGCATTCCCTCGAATAAACAAT  
ATAAGCTTTTGACTCCTCCCTCCTTCTTTCTTACTACTTTTAGCATCATCTATAGTTGAAGCTGGCGCAGGAACAGGCTGAACT  
GTATATCCCCCTTAGCTGGCAACTTAGCTCACGCAGGGGCTTCAGTAGACCTGACCATTTTTTCTTTACACTTGGCAGGTGT  
CTCCTCAATTCTAGGGGCCATTAACCTTTATTACAACAATTATCAATATAAAAACCCCTGCCATATCACAATATCAAACCCCTC  
TATTCGTGTGATCCGTATTAGTCACTGCTGTACTACTTCTCTCACTCCCTGTACTAGCAGCCGGAATCACAATACTATTAA  
CAGACCGAAACCTAAATACAACCTTTTTTTGACCCAGCAGGAGGGCGGAGATCCTATTCTATATCAACACTTGTTC

>RD352-1B\_COI

TACTCTGTATCTACTATTTGGTGCCTGAGCAGGCATAGTAGGAACAGCCTTAAGCCTACTGATTCGTGCCGAACCTGGGCCAAC  
CTGGTACTCTGCTTGGAGATGATCAAATTTATAATGTTATCGTAACCGCACATGCATTTCGTAATAATTTTCTTTATAGTTATAC  
CAATTATAATCGGAGGATTTGGTAATTGACTAGTTCGCCCTAATAAATTTGGTGCCCCAGACATAGCATTCCCTCGAATAAACAAT  
ATAAGCTTTTGACTCCTCCCTCCTTCTTTCTTACTACTTTTAGCATCATCTATAGTTGAAGCTGGCGCAGGAACAGGCTGAACT  
GTATATCCCCCTTAGCTGGCAACTTAGCTCACGCAGGGGCTTCAGTAGACCTGACCATTTTTTCTTTACACTTGGCAGGTGT  
CTCCTCAATTCTAGGGGCCATTAACCTTTATTACAACAATTATCAATATAAAAACCCCTGCCATATCACAATATCAAACCCCTC  
TATTCGTGTGATCCGTATTAGTCACTGCTGTACTACTTCTCTCACTCCCTGTACTAGCAGCCGGAATCACAATACTATTAA  
CAGACCGAAACCTAAATACAACCTTTTTTTGACCCAGCAGGAGGGCGGAGATCCTATTCTATATCAACACTTGTTC

>RD354-1C\_COI

TACTCTGTATCTACTATTTGGTGCCTGAGCAGGCATAGTAGGAACAGCCTTAAGCCTACTGATTCGTGCCGAACCTGGGCCAAC  
CTGGTACTCTGCTTGGAGATGATCAAATTTATAATGTTATCGTAACCGCACATGCATTTCGTAATAATTTTCTTTATAGTTATAC  
CAATTATAATCGGAGGATTTGGTAATTGACTAGTTCGCCCTAATAAATTTGGTGCCCCAGACATAGCATTCCCTCGAATAAACAAT  
ATAAGCTTTTGACTCCTCCCTCCTTCTTTCTTACTACTTTTAGCATCATCTATAGTTGAAGCTGGCGCAGGAACAGGCTGAACT  
GTATATCCCCCTTAGCTGGCAACTTAGCTCACGCAGGGGCTTCAGTAGACCTGACCATTTTTTCTTTACACTTGGCAGGTGT  
CTCCTCAATTCTAGGGGCCATTAACCTTTATTACAACAATTATCAATATAAAAACCCCTGCCATATCACAATATCAAACCCCTC  
TATTCGTGTGATCCGTATTAGTCACTGCTGTACTACTTCTCTCACTCCCTGTACTAGCAGCCGGAATCACAATACTATTAA  
CAGACCGAAACCTAAATACAACCTTTTTTTGACCCAGCAGGAGGGCGGAGATCCTATTCTATATCAACACTTGTTC

>RD355-1B\_COI

TACTCTGTATCTACTATTTGGTGCCTGAGCAGGCATAGTAGGAACAGCCTTAAGCCTACTGATTCGTGCCGAACCTGGGCCAAC  
CTGGTACTCTGCTTGGAGATGATCAAATTTATAATGTTATCGTAACCGCACATGCATTTCGTAATAATTTTCTTTATAGTTATAC  
CAATTATAATCGGAGGATTTGGTAATTGACTAGTTCGCCCTAATAAATTTGGTGCCCCAGACATAGCATTCCCTCGAATAAACAAT  
ATAAGCTTTTGACTCCTCCCTCCTTCTTTCTTACTACTTTTAGCATCATCTATAGTTGAAGCTGGCGCAGGAACAGGCTGAACT  
GTATATCCCCCTTAGCTGGCAACTTAGCTCACGCAGGGGCTTCAGTAGACCTGACCATTTTTTCTTTACACTTGGCAGGTGT  
CTCCTCAATTCTAGGGGCCATTAACCTTTATTACAACAATTATCAATATAAAAACCCCTGCCATATCACAATATCAAACCCCTC  
TATTCGTGTGATCCGTATTAGTCACTGCTGTACTACTTCTCTCACTCCCTGTACTAGCAGCCGGAATCACAATACTATTAA  
CAGACCGAAACCTAAATACAACCTTTTTTTGACCCAGCAGGAGGGCGGAGATCCTATTCTATATCAACACTTGTTC

>RD356-1B\_COI

TACTCTGTATCTACTATTTGGTGCCTGAGCAGGCATAGTAGGAACAGCCTTAAGCCTACTGATTCGTGCCGAACCTGGGCCAAC  
CTGGTACTCTGCTTGGAGATGATCAAATTTATAATGTTATCGTAACCGCACATGCATTTCGTAATAATTTTCTTTATAGTTATAC  
CAATTATAATCGGAGGATTTGGTAATTGACTAGTTCGCCCTAATAAATTTGGTGCCCCAGACATAGCATTCCCTCGAATAAACAAT  
ATAAGCTTTTGACTCCTCCCTCCTTCTTTCTTACTACTTTTAGCATCATCTATAGTTGAAGCTGGCGCAGGAACAGGCTGAACT  
GTATATCCCCCTTAGCTGGCAACTTAGCTCACGCAGGGGCTTCAGTAGACCTGACCATTTTTTCTTTACACTTGGCAGGTGT  
CTCCTCAATTCTAGGGGCCATTAACCTTTATTACAACAATTATCAATATAAAAACCCCTGCCATATCACAATATCAAACCCCTC  
TATTCGTGTGATCCGTATTAGTCACTGCTGTACTACTTCTCTCACTCCCTGTACTAGCAGCCGGAATCACAATACTATTAA  
CAGACCGAAACCTAAATACAACCTTTTTTTGACCCAGCAGGAGGGCGGAGATCCTATTCTATATCAACACTTGTTC

>RD357-1C\_COI

TACTCTGTATCTACTATTTGGTGCCTGAGCAGGCATAGTAGGAACAGCCTTAAGCCTACTGATTCGTGCCGAACCTGGGCCAAC  
CTGGTACTCTGCTTGGAGATGATCAAATTTATAATGTTATCGTAACCGCACATGCATTTCGTAATAATTTTCTTTATAGTTATAC  
CAATTATAATCGGAGGATTTGGTAATTGACTAGTTCGCCCTAATAAATTTGGTGCCCCAGACATAGCATTCCCTCGAATAAACAAT  
ATAAGCTTTTGACTCCTCCCTCCTTCTTTCTTACTACTTTTAGCATCATCTATAGTTGAAGCTGGCGCAGGAACAGGCTGAACT  
GTATATCCCCCTTAGCTGGCAACTTAGCTCACGCAGGGGCTTCAGTAGACCTGACCATTTTTTCTTTACACTTGGCAGGTGT  
CTCCTCAATTCTAGGGGCCATTAACCTTTATTACAACAATTATCAATATAAAAACCCCTGCCATATCACAATATCAAACCCCTC  
TATTCGTGTGATCCGTATTAGTCACTGCTGTACTACTTCTCTCACTCCCTGTACTAGCAGCCGGAATCACAATACTATTAA  
CAGACCGAAACCTAAATACAACCTTTTTTTGACCCAGCAGGAGGGCGGAGATCCTATTCTATATCAACACTTGTTC

>RD360-1C\_COI

TACTCTGTATCTACTGTTGGTGCCTGAGCAGGCATAGTAGGAACAGCCTTAAGCCTACTGATTCGTGCCGAACCTGGGCCAAC  
CCGGTACTCTGCTTGGAGATGACCAAATTTATAATGTTATCGTAACCGCACATGCATTTCGTAATAATTTTCTTTATAGTTATAC  
CAATTATAATGGAGGGTTGGTAATTGACTAGTTCGCCCTAATAAATTTGGTGCCCCAGACATAGCATTCCCTCGAATAAATAAT  
ATAAGCTTCTGACTCCTCCCTCCTTCTTTCTTACTACTTTTAGCATCATCTATAGTTGAAGCTGGCGCAGGAACAGGCTGAACT  
GTATATCCCCCTTAGCTGGCAACTTAGCTCACGCAGGGGCTTCAGTAGACCTGACCATTTTTTCTTTACACTTGGCAGGTGT  
CTCCTCAATTCTAGGGGCCATTAACCTTTATTACAACAATTATCAATATAAAAACCCCTGCCATATCACAATATCAAACCCCTC  
TATTCGTGTGATCCGTATTAGTCACTGCTGTACTACTTCTCTCACTCCCTGTACTAGCAGCCGGAATCACAATACTATTAA  
CAGACCGAAACCTAAATACAACCTTTTTTTGACCCAGCAGGAGGGCGGAGATCCTATTCTATATCAACACTTGTTC

>RD119-F\_COI

TACTCTGTATCTACTATTTGGTGCCTGAGCAGGCATAGTAGGAACAGCCTTAAGCCTACTGATTCGTGCCGAACCTGGGCCAAC  
CTGGTACTCTGCTTGGAGATGATCAAATTTATAATGTTATCGTAACCGCACATGCATTTCGTAATAATTTTCTTTATAGTTATAC  
CAATTATAATCGGAGGATTTGGTAATTGACTAGTTCGCCCTAATAAATTTGGTGCCCCAGACATAGCATTCCCTCGAATAAACAAT  
ATAAGCTTTTGACTCCTCCCTCCTTCTTTCTTACTACTTTTAGCATCATCTATAGTTGAAGCTGGCGCAGGAACAGGCTGAACT  
GTATATCCCCCTTAGCTGGCAACTTAGCTCACGCAGGGGCTTCAGTAGACCTGACCATTTTTTCTTTACACTTGGCAGGTGT





>RD382-C\_COI

TACTCTGTATCTACTATTTGGTGCCTGAGCAGGCATAGTAGGAACAGCCTTAAGCCTACTGATTCGTGCCGAACCTGGGCCAAC  
CTGGTACTCTGCTTGGAGATGACCAAATTTATAATGTTATCGTAACCGCACATGCATTTGTAATAATTTCTTTTATAGTTATAC  
CAATTATAATCGGAGGATTTGGTAATTGACTAGTTCCTTAATAAATTGGTGCCCCAGACATAGCATTCCCTCGAATAAACAAT  
ATAAGCTTTTGACTCCTCCCTCCTTCTTTCTTACTACTTTTAGCATCATCTATAGTTGAAGCTGGCGCAGGAACAGGCTGAAC  
GTATATCCCCCTCTAGCTGGCAACTTAGCTCACGCAGGGGCTTCAGTAGACCTGACCATTTTTCTTTACACTTGGCAGGTGT  
CTCCTCAATTCTAGGGGCCATTAACCTTTATTACAACAATTATCAATATAAAAACCCCTGCCATATCACAATATCAAACCCCTC  
TATTCGTGTGATCCGTATTAGTCACTGCTGTACTACTACTTCTCTCACTCCCTGTACTAGCAGCCGGAATCACAATACTATTAA  
CAGACCGAAACCTAAATACAACCTTTTTTGACCCAGCAGGAGGGCGGAGATCCTATTCTATATCAACACTTGTTT

>RD416-B\_COI

TACTCTGTATCTACTATTTGGTGCCTGAGCAGGCATAGTAGGAACAGCCTTAAGCCTACTGATTCGTGCCGAACCTGGGCCAAC  
CCGGTACTCTGCTTGGAGATGACCAAATTTATAATGTTATCGTAACCGCACATGCATTTGTAATAATTTCTTTTATAGTTATAC  
CAATTATAATTGGAGGATTTGGTAATTGACTAGTTCCTTAATAAATTGGTGCCCCAGACATAGCATTCCCTCGAATAAATAAT  
ATAAGCTTTTGACTCCTCCCTCCTTCTTTCTTACTACTTTTAGCATCATCTATAGTTGAAGCTGGCGCAGGAACAGGCTGAAC  
GTATATCCCCCTCTAGCTGGCAACTTAGCTCACGCAGGGGCTTCAGTAGACCTGACCATTTTTCTTTACACTTAGCAGGTGT  
CTCCTCAATTCTAGGGGCCATTAACCTTTATTACAACAATTATCAATATAAAAACCCCTGCCATATCACAATATCAAACCCCTT  
TATTCGTGTGATCCGTATTAGTCACTGCTGTACTACTACTTCTCTCACTCCCTGTACTAGCAGCCGGAATTACAATACTATTAA  
CAGACCGAAACCTAAATACAACCTTTTTTGACCCAGCAGGAGGGCGGAGATCCTATTCTATATCAACACTTGTTT

>RD417-B\_COI

TACTCTGTATCTACTATTTGGTGCCTGAGCAGGCATAGTAGGAACAGCCTTAAGCCTACTGATTCGTGCCGAACCTGGGCCAAC  
CCGGTACTCTGCTTGGAGATGACCAAATTTATAATGTTATCGTAACCGCACATGCATTTGTAATAATTTCTTTTATAGTTATAC  
CAATTATAATTGGAGGATTTGGTAATTGACTAGTTCCTTAATAAATTGGTGCCCCAGACATAGCATTCCCTCGAATAAATAAT  
ATAAGCTTTTGACTCCTCCCTCCTTCTTTCTTACTACTTTTAGCATCATCTATAGTTGAAGCTGGCGCAGGAACAGGCTGAAC  
GTATATCCCCCTCTAGCTGGCAACTTAGCTCACGCAGGGGCTTCAGTAGACCTGACCATTTTTCTTTACACTTAGCAGGTGT  
CTCCTCAATTCTAGGGGCCATTAACCTTTATTACAACAATTATCAATATAAAAACCCCTGCCATATCACAATATCAAACCCCTT  
TATTCGTGTGATCCGTATTAGTCACTGCTGTACTACTACTTCTCTCACTCCCTGTACTAGCAGCCGGAATTACAATACTATTAA  
CAGACCGAAACCTAAATACAACCTTTTTTGACCCAGCAGGAGGGCGGAGATCCTATTCTATATCAACACTTGTTT

>RD418-B\_COI

TACTCTGTATCTACTATTTGGTGCCTGAGCAGGCATAGTAGGAACAGCCTTAAGCCTACTGATTCGTGCCGAACCTGGGCCAAC  
CCGGTACTCTGCTTGGAGATGACCAAATTTATAATGTTATCGTAACCGCACATGCATTTGTAATAATTTCTTTTATAGTTATAC  
CAATTATAATTGGAGGATTTGGTAATTGACTAGTTCCTTAATAAATTGGTGCCCCAGACATAGCATTCCCTCGAATAAATAAT  
ATAAGCTTTTGACTCCTCCCTCCTTCTTTCTTACTACTTTTAGCATCATCTATAGTTGAAGCTGGCGCAGGAACAGGCTGAAC  
GTATATCCCCCTCTAGCTGGCAACTTAGCTCACGCAGGGGCTTCAGTAGACCTGACCATTTTTCTTTACACTTAGCAGGTGT  
CTCCTCAATTCTAGGGGCCATTAACCTTTATTACAACAATTATCAATATAAAAACCCCTGCCATATCACAATATCAAACCCCTT  
TATTCGTGTGATCCGTATTAGTCACTGCTGTACTACTACTTCTCTCACTCCCTGTACTAGCAGCCGGAATTACAATACTATTAA  
CAGACCGAAACCTAAATACAACCTTTTTTGACCCAGCAGGAGGGCGGAGATCCTATTCTATATCAACACTTGTTT



Partial mitochondrial cytochrome b (CYTB) of authenticated parts of *Cervus nippon* and *Cornu Cervi Pantotrichum* (*C. nippon*)

>RD351-1B\_CYTb

AGGAGCAACAGTCATCACCAACCTCCTCTCAGCAATTCCATATATTGGCACAAACCTAGTCGAATGAATCTGAGGAGGCTTT  
TCAGTAGATAAAGCAACCCTAACCCGATTCTTCGCTTTCCACTTTATTCTTCCATTTCATCATCGCAGCACTCGCTATAGTACAC  
TTACTCTTCCTTCACGAGACAGGATCCAACAACCCAACAGGAATCCCATCGGACGCAGACAAAAATCCCTTCCATCCTTACTA  
CACTATTTAAAGATATCCTGGGTATCTTACTTCTAATACTCTTCCTAATAATTACTAGTATTATTCGCACCAGACCTGCTTGGAGA  
TCCAGACAACTATAACCCAGCAAATCCACTCAACACACCCCCCYACATCAAACCTGAATGATACTTCTATTTGCATACGCA  
ATCCTA

>RD352-1B\_CYTb

AGGAGCAACAGTCATCACCAACCTCCTCTCAGCAATTCCATATATTGGCACAAACCTAGTCGAATGAATCTGAGGAGGCTTT  
TCAGTAGATAAAGCAACCCTAACCCGATTCTTCGCTTTCCACTTTATTCTTCCATTTCATCATCGCAGCACTCGCTATAGTACAC  
TTACTCTTCCTTCACGAGACAGGATCCAACAACCCAACAGGAATCCCATCGGACGCAGACAAAAATCCCTTCCATCCTTACTA  
CACTATTTAAAGATATCCTGGGTATCTTACTTCTAATACTCTTCCTAATAATTACTAGTATTATTCGCACCAGACCTGCTTGGAGA  
TCCAGACAACTATAACCCAGCAAATCCACTCAACACACCCCCCTCACATCAAACCTGAATGATACTTCTATTTGCATACGCAA  
TCCTA

>RD354-1C\_CYTb

AGGAGCAACAGTCATCACCAACCTCCTCTCAGCAATTCCATATATTGGCACAAACCTAGTCGAATGAATCTGAGGAGGCTTT  
TCAGTAGATAAAGCAACCCTAACCCGATTCTTCGCTTTCCACTTTATTCTTCCATTTCATCATCGCAGCACTCGCTATAGTACAC  
TTACTCTTCCTTCACGAGACAGGATCCAACAACCCAACAGGAATCCCATCGGACGCAGACAAAAATCCCTTCCATCCTTACTA  
CACTATTTAAAGATATCCTGGGTATCTTACTTCTAATACTCTTCCTAATAATTACTAGTATTATTCGCACCAGACCTGCTTGGAGA  
TCCAGACAACTATAACCCAGCAAATCCACTCAACACACCCCCCTCACATCAAACCTGAATGATACTTCTATTTGCATACGCAA  
TCCTA

>RD355-1B\_CYTb

AGGAGCAACAGTCATCACCAACCTCCTCTCAGCAATTCCATATATTGGCACAAACCTAGTCGAATGAATCTGAGGAGGCTTT  
TCAGTAGATAAAGCAACCCTAACCCGATTCTTCGCTTTCCACTTTATTCTTCCATTTCATCATCGCAGCACTCGCTATAGTACAC  
TTACTCTTCCTTCACGAGACAGGATCCAACAACCCAACAGGAATCCCATCGGACGCAGACAAAAATCCCTTCCATCCTTACTA  
CACTATTTAAAGATATCCTGGGTATCTTACTTCTAATACTCTTCCTAATAATTACTAGTATTATTCGCACCAGACCTGCTTGGAGA  
TCCAGACAACTATAACCCAGCAAATCCACTCAACACACCCCCCTCACATCAAACCTGAATGATACTTCTATTTGCATACGCAA  
TCCTA

>RD356-1B\_CYTb

AGGAGCAACAGTCATCACCAACCTCCTCTCAGCAATTCCATATATTGGCACAAACCTAGTCGAATGAATCTGAGGAGGCTTT  
TCAGTAGATAAAGCAACCCTAACCCGATTCTTCGCTTTCCACTTTATTCTTCCATTTCATCATCGCAGCACTCGCTATAGTACAC  
TTACTCTTCCTTCACGAGACAGGATCCAACAACCCAACAGGAATCCCATCGGACGCAGACAAAAATCCCTTCCATCCTTACTA  
CACTATTTAAAGATATCCTGGGTATCTTACTTCTAATACTCTTCCTAATAATTACTAGTATTATTCGCACCAGACCTGCTTGGAGA  
TCCAGACAACTATAACCCAGCAAATCCACTCAACACACCCCCCTCACATCAAACCTGAATGATACTTCTATTTGCATACGCAA  
TCCTA

>RD357-1C\_CYTb

AGGAGCAACAGTCATCACCAACCTCCTCTCAGCAATTCCATATATTGGCACAAACCTAGTCGAATGAATCTGAGGAGGCTTT  
TCAGTAGATAAAGCAACCCTAACCCGATTCTTCGCTTTCCACTTTATTCTTCCATTTCATCATCGCAGCACTCGCTATAGTACAC  
TTACTCTTCCTTCACGAGACAGGATCCAACAACCCAACAGGAATCCCATCGGACGCAGACAAAAATCCCTTCCATCCTTACTA  
CACTATTTAAAGATATCCTGGGTATCTTACTTCTAATACTCTTCCTAATAATTACTAGTATTATTCGCACCAGACCTGCTTGGAGA  
TCCAGACAACTATAACCCAGCAAATCCACTCAACACACCCCCCTCACATCAAACCTGAATGATACTTCTATTTGCATACGCAA  
TCCTA

>RD360-1C\_CYTb

AGGAGCAACAGTCATCACCAACCTCCTCTCAGCAATTCCATACATTGGCACAAACCTAGTCGAATGAATCTGAGGGGGCTTT  
TCAGTAGATAAAGCAACCCTGACCCGATTTTCGCTTTCCACTTTATTCTTCCATTTCATCATCGCAGCACTCGCTATAGTACAC  
TTACTCTTCCTTCACGAGACAGGATCCAATAACCCAACAGGAATCCCATCGGACGCAGACAAAAATCCCTTCCATCCTTACTA  
TACTATTTAAAGATATCTTAGGCATCTTACTTCTAATACTCTTCCTAATAATTACTAGTATTATTCGCACCAGACCTGCTTGGAGA  
CCCAGACAACTATAACCCAGCAAATCCACTCAACACACCCCCCTCACATCAAACCCGAATGATACTTCTATTTGCATACGCAA  
ATCCTA

>RD119-F\_CYTb

AGGAGCAACAGTCATCACCAACCTCCTCTCAGCAATTCCATATATTGGCACAAACCTAGTCGAATGAATCTGAGGAGGCTTT  
TCAGTAGATAAAGCAACCCTAACCCGATTCTTCGCTTTCCACTTTATTCTTCCATTTCATCATCGCAGCACTCGCTATAGTACAC  
TTACTCTTCCTTCACGAGACAGGATCCAACAACCCAACAGGAATCCCATCGGACGCAGACAAAAATCCCTTCCATCCTTACTA  
CACTATTTAAAGATATCCTGGGTATCTTACTTCTAATACTCTTCCTAATAATTACTAGTATTATTCGCACCAGACCTGCTTGGAGA  
TCCAGACAACTATAACCCAGCAAATCCACTCAACACACCCCCCTCACATCAAACCTGAATGATAYTCTTATTTGCATACGCAA  
TCCTA

>RD117-A\_CYTb

AGGAGCAACAGTCATCACCAACCTCCTCTCAGCAATTCCATATATTGGCACAAACCTAGTCGAATGAATCTGAGGAGGCTTT  
TCAGTAGATAAAGCAACCCTAACCCGATTCTTCGCTTTCCACTTTATTCTTCCATTTCATCATCGCAGCACTCGCTATAGTACAC  
TTACTCTTCCTTCACGAGACAGGATCCAACAACCCAACAGGAATCCCATCGGACGCAGACAAAAATCCCTTCCATCCTTACTA  
CACTATTTAAAGATATCCTGGGTATCTTACTTCTAATACTCTTCCTAATAATTACTAGTATTATTCGCACCAGACCTGCTTGGAGA  
TCCAGACAACTATAACCCAGCAAATCCACTCAACACACCCCCCTCACATCAAACCTGAATGATACTTCTATTTGCATACGCAA  
TCCTA

>RD118-A\_CYTb

AGGAGCAACAGTCATCACCAACCTCCTCTCAGCAATTCCATATATTGGCACAAACCTAGTCGAATGAATCTGAGGAGGCTTT  
TCAGTAGATAAAGCAACCCTAACCCGATTCTTCGCTTTCCACTTTATTCTTCCATTTCATCATCGCAGCACTCGCTATAGTACAC  
TTACTCTTCCTTCACGAGACAGGATCCAACAACCCAACAGGAATCCCATCGGACGCAGACAAAAATCCCTTCCATCCTTACTA  
CACTATTTAAAGATATCCTGGGTATCTTACTTCTAATACTCTTCCTAATAATTACTAGTATTATTCGCACCAGACCTGCTTGGAGA  
TCCAGACAACTATAACCCAGCAAATCCACTCAACACACCCCCCTCACATCAAACCTGAATGATACTTCTATTTGCATACGCAA  
TCCTA

>RD373-B\_CYTb



Partial mitochondrial 16S ribosomal RNA (16SrRNA) of authenticated parts of *Cervus nippon* and *Cornu Cervi Pantotrichum* (*C. nippon*)

>RD351-1B\_16SrRNA

TGTTYTYTAAATAGGGACTTGTATGAATGGCCACACGAGGGTTTACTGTCTCTTACTTCCAATCAGTGAAATTGACCTTCCC  
GTGAAGAGGCGGGAATATATTAATAAGACGAGAAGACCCTATGGAGCTTAACTACTTAGCCCAAAAAGAAACAAATTCATT  
ACTAAGGAAACAACAACACTCTTTATGGGCTAACAGCTTTGGTTGGGGTGACCTCGGAGAACAAGAAATCTCCGAGCGATT  
TTAAAGACTAGACCTACAAGTCGAATCACACAATCGTTTATTGATCCAAAAAATAATTGATCAACGGAACAAGTTACCCTA  
GGGATAACAGCGCAATCCTATTCAAGAGTCCATATCGACAATAGGGTTTACGACCTCGATGTTGGATCAGGACATCCCGATG  
GTGCAACCGCTATCAAAGGTTTCGTTTGTTC AACGATTAAGT

>RD352-1B\_16SrRNA

TGTTYTYTAAATAGGGACTTGTATGAATGGCCACACGAGGGTTTACTGTCTCTTACTTCCAATCAGTGAAATTGACCTTCCC  
GTGAAGAGGCGGGAATATATTAATAAGACGAGAAGACCCTATGGAGCTTAACTACTTAGCCCAAAAAGAAACAAATTCATT  
ACTAAGGAAACAACAACACTCTTTATGGGCTAACAGCTTTGGTTGGGGTGACCTCGGAGAACAAGAAATCTCCGAGCGATT  
TTAAAGACTAGACCTACAAGTCGAATCACACAATCGTTTATTGATCCAAAAAATAATTGATCAACGGAACAAGTTACCCTA  
GGGATAACAGCGCAATCCTATTCAAGAGTCCATATCGACAATAGGGTTTACGACCTCGATGTTGGATCAGGACATCCCGATG  
GTGCAACCGCTATCAAAGGTTTCGTTTGTTC AACRATTAAGT

>RD354-1C\_16SrRNA

TGTTCTCTAAATAGGGACTTGTATGAATGGCCACACGAGGGTTTACTGTCTCTTACTTCCAATCAGTGAAATTGACCTTCCC  
GTGAAGAGGCGGGAATATATTAATAAGACGAGAAGACCCTATGGAGCTTAACTACTTAGCCCAAAAAGAAACAAATTCATT  
ACTAAGGAAACAACAACACTCTTTATGGGCTAACAGCTTTGGTTGGGGTGACCTCGGAGAACAAGAAATCTCCGAGCGATT  
TTAAAGACTAGACCTACAAGTCGAATCACACAATCGTTTATTGATCCAAAAAATAATTGATCAACGGAACAAGTTACCCTAGGG  
ATAACAGCGCAATCCTATTCAAGAGTCCATATCGACAATAGGGTTTACGACCTCGATGTTGGATCAGGACATCCCGATGGT  
CAACCGCTATCAAAGGTTTCGTTTGTTC AACGATTAAGT

>RD355-1B\_16SrRNA

TGTTCTCTAAATAGGGACTTGTATGAATGGCCACACGAGGGTTTACTGTCTCTTACTTCCAATCAGTGAAATTGACCTTCCC  
GTGAAGAGGCGGGAATATATTAATAAGACGAGAAGACCCTATGGAGCTTAACTACTTAGCCCAAAAAGAAACAAATTCATT  
ACTAAGGAAACAACAACACTCTTTATGGGCTAACAGCTTTGGTTGGGGTGACCTCGGAGAACAAGAAATCTCCGAGCGATT  
TTAAAGACTAGACCTACAAGTCGAATCACACAATCGTTTATTGATCCAAAAAATAATTGATCAACGGAACAAGTTACCCTAG  
GGATAACAGCGCAATCCTATTCAAGAGTCCATATCGACAATAGGGTTTACGACCTCGATGTTGGATCAGGACATCCCGATGG  
TGCAACCGCTATCAAAGGTTTCGTTTGTTC AACGATTAAGT

>RD356-1B\_16SrRNA

TGTTCTCTAAATAGGGACTTGTATGAATGGCCACACGAGGGTTTACTGTCTCTTACTTCCAATCAGTGAAATTGACCTTCCC  
GTGAAGAGGCGGGAATATATTAATAAGACGAGAAGACCCTATGGAGCTTAACTACTTAGCCCAAAAAGAAACAAATTCATT  
ACTAAGGAAACAACAACACTCTTTATGGGCTAACAGCTTTGGTTGGGGTGACCTCGGAGAACAAGAAATCTCCGAGCGATT  
TTAAAGACTAGACCTACAAGTCGAATCACACAATCGTTTATTGATCCAAAAAATAATTGATCAACGGAACAAGTTACCCTAGGG  
ATAACAGCGCAATCCTATTCAAGAGTCCATATCGACAATAGGGTTTACGACCTCGATGTTGGATCAGGACATCCCGATGGT  
CAACCGCTATCAAAGGTTTCGTTTGTTC AACGATTAAGT

>RD357-1C\_16SrRNA

TGTTCTCTAAATAGGGACTTGTATGAATGGCCACACGAGGGTTTACTGTCTCTTACTTCCAATCAGTGAAATTGACCTTCCC  
GTGAAGAGGCGGGAATATATTAATAAGACGAGAAGACCCTATGGAGCTTAACTACTTAGCCCAAAAAGAAACAAATTCATT  
ACTAAGGAAACAACAACACTCTTTATGGGCTAACAGCTTTGGTTGGGGTGACCTCGGAGAACAAGAAATCTCCGAGCGATT  
TTAAAGACTAGACCTACAAGTCGAATCACACAATCGTTTATTGATCCAAAAAATAATTGATCAACGGAACAAGTTACCCTAGGG  
ATAACAGCGCAATCCTATTCAAGAGTCCATATCGACAATAGGGTTTACGACCTCGATGTTGGATCAGGACATCCCGATGGT  
CAACCGCTATCAAAGGTTTCGTTTGTTC AACGATTAAGT

>RD360-1C\_16SrRNA

TGTTCTYTAATAGGGACTTGTATGAATGGCCACACGAGGGTTTACTGTCTCTTACTTCCAATCAGTGAAATTGACCTTCCC  
GTGAAGAGGCGGGAATATATTAATAAGACGAGAAGACCCTATGGAGCTTAACTACTTAGCCCAAAAAGAAACAAATTCAC  
TACTAAGGAAACAACAACACTCTTTATGGGCTAACAGCTTTGGTTGGGGTGACCTCGGAGAACAAGAAATCTCCGAGCGAT  
TTAAAGACTAGACCTACAAGTCGAATCACACAATCGTTTATTGATCCAAAAAATAATTGATCAACGGAACAAGTTACCCTAGGG  
ATAACAGCGCAATCCTATTCAAGAGTCCATATCGACAATAGGGTTTACGACCTCGATGTTGGATCAGGACATCCCGATGGT  
CAACCGCTATCAAAGGTTTCGTTTGTTC AACGATTAAGT

>RD119-F\_16SrRNA

TGTTCTCTAAATAGGGACTTGTATGAATGGCCACACGAGGGTTTACTGTCTCTTACTTCCAATCAGTGAAATTGACCTTCCC  
GTGAAGAGGCGGGAATATATTAATAAGACGAGAAGACCCTATGGAGCTTAACTACTTAGCCCAAAAAGAAACAAATTCATT  
ACTAAGGAAACAACAACACTCTTTATGGGCTAACAGCTTTGGTTGGGGTGACCTCGGAGAACAAGAAATCTCCGAGCGATT  
TTAAAGACTAGACCTACAAGTCGAATCACACAATCGTTTATTGATCCAAAAAATAATTGATCAACGGAACAAGTTACCCTAGGG  
ATAACAGCGCAATCCTATTCAAGAGTCCATATCGACAATAGGGTTTACGACCTCGATGTTGGATCAGGACATCCCGATGGT  
CAACCGCTATCAAAGGTTTCGTTTGTTC AACGATTAAGT

>RD117-A\_16SrRNA

TGTTCTCTAAATAGGGACTTGTATGAATGGCCACACGAGGGTTTACTGTCTCTTACTTCCAATCAGTGAAATTGACCTTCCC  
GTGAAGAGGCGGGAATATATTAATAAGACGAGAAGACCCTATGGAGCTTAACTACTTAGCCCAAAAAGAAACAAATTCATT  
ACTAAGGAAACAACAACACTCTTTATGGGCTAACAGCTTTGGTTGGGGTGACCTCGGAGAACAAGAAATCTCCGAGCGATT  
TTAAAGACTAGACCTACAAGTCGAATCACACAATCGTTTATTGATCCAAAAAATAATTGATCAACGGAACAAGTTACCCTAGGG  
ATAACAGCGCAATCCTATTCAAGAGTCCATATCGACAATAGGGTTTACGACCTCGATGTTGGATCAGGACATCCCGATGGT  
CAACCGCTATCAAAGGTTTCGTTTGTTC AACGATTAAGT

>RD118-A\_16SrRNA

TGTTCTCTAAATAGGGACTTGTATGAATGGCCACACGAGGGTTTACTGTCTCTTACTTCCAATCAGTGAAATTGACCTTCCC  
GTGAAGAGGCGGGAATATATTAATAAGACGAGAAGACCCTATGGAGCTTAACTACTTAGCCCAAAAAGAAACAAATTCATT  
ACTAAGGAAACAACAACACTCTTTATGGGCTAACAGCTTTGGTTGGGGTGACCTCGGAGAACAAGAAATCTCCGAGCGATT  
TTAAAGACTAGACCTACAAGTCGAATCACACAATCGTTTATTGATCCAAAAAATAATTGATCAACGGAACAAGTTACCCTAG  
GGATAACAGCGCAATCCTATTCAAGAGTCCATATCGACAATAGGGTTTACGACCTCGATGTTGGATCAGGACATCCCGATGG  
TGCAACCGCTATCAAAGGTTTCGTTTGTTC AACGATTAAGT

>RD373-B\_16SrRNA

