




新界沙田香港科學園第2期  
科技大道西11號  
生物科技中心2座7樓


7/F, Biotech Centre 2,  
No. 11 Science Park West Avenue,  
Hong Kong Science Park,  
Shatin, NT


只供預約參觀  
By Appointments Only

聯絡我們 Contact Us



 : <https://cmro.gov.hk/>

 : (852) 2209 9476

 : [gcmti\\_herbarium@dh.gov.hk](mailto:gcmti_herbarium@dh.gov.hk)

## INTRODUCTION

The Department of Health is actively working on the establishment of the permanent Government Chinese Medicines Testing Institute (GCMTI). One of the key tasks of the GCMTI is to display and digitise Chinese medicines specimens to support the research, development and education of Chinese medicines. To achieve this, the GCMTI is now collecting specimens of Chinese materia medica (CMM) and medicinal plant by category. Our collection will include Chinese medicines commonly used in Hong Kong, *Daodi* medicinal materials of China, Hong Kong indigenous herbal medicines, *Lingnan* herbal medicines, traditional herbal medicines used in Southeast Asia, and western herbal medicines.

The GCMTI, with reference to study of Hong Kong market and comments of the trade, has embarked on collection of specimens of Chinese medicines commonly used in Hong Kong. To ensure these specimens are authoritative, scientific and allow full traceability, CMM specimens are collected together with their corresponding origin plants and decoction pieces, which in turn will facilitate accurate identification of source species of Chinese medicines, and allow contrast of morphological characteristics from multiple aspects.

This exhibition highlights some CMM commonly used in Hong Kong with their corresponding origin plants and decoction pieces. We hope that you can know more about the Chinese medicines regarding their origin plants, CMM and decoction pieces.

## 引言

衛生署正加緊籌建永久政府中藥檢測中心（檢測中心）。檢測中心其一項重要工作是要展示及數碼化中藥標本，作為對中藥研發及教育工作的支持。為此，檢測中心正收集不同來源的藥材及藥用植物標本，當中包括香港常用中藥、中國道地藥材、香港地方草藥、嶺南草藥、東南亞傳統草藥和西草藥等。

檢測中心經參考香港市場情況及業界意見後，展開了「香港常用中藥」標本收集的工作。而為使標本具備權威性、科學性和可追溯性，檢測中心亦一併收集藥材標本及其對應的原植物和飲片，以助準確鑒定中藥的來源品種，及多方面比對標本形態特徵。

本展覽為大家展示部分較有特色的香港常用中藥材，以及對應的原植物標本和飲片，讓大家從原植物、藥材和飲片三個方面認識中藥，促進對中藥的瞭解。



衛生署

Department of Health

香港常用中藥標本展

政府中藥檢測中心

GCMTI  
Thematic Exhibition on  
Specimens of Chinese Medicines  
Commonly Used  
in Hong Kong

本小冊子內的資訊，可供發布或複製作非商業用途，但必須註明有關資訊是由衛生署中醫藥規管辦公室提供的。除非事先得到衛生署中醫藥規管辦公室的書面授權，否則嚴禁複製、改編、分發、發布或提供本小冊子內的資訊作商業用途。

The information in this pamphlet may be re-disseminated or reproduced, provided that the Chinese Medicine Regulatory Office (CMRO), as the source of information, is acknowledged and that the re-dissemination or reproduction is for non-commercial use. Any other reproduction, adaptation, distribution, dissemination or making available of the information in this pamphlet for commercial use is strictly prohibited unless prior written authorization is obtained from the CMRO.



## 展覽內容

為了讓市民、業界和學術界更形象地瞭解香港常用中藥，中藥標本館設有5個展櫃專題：

### 地黃專題

展示地黃的原植物、藥材以及飲片標本；

### 黃芪專題

展示黃芪的原植物、藥材以及其斜切和縱切飲片標本；

### 桔梗專題

展示桔梗的原植物、去外皮和不去外皮的藥材以及其橫切和縱切飲片標本；

### 厚樸專題

展示厚樸的原植物、藥材以及其斜切、橫切和縱切飲片標本；

### 赤芍專題

展示赤芍的原植物、藥材以及其斜切、橫切和縱切飲片標本。

## EXHIBITION CONTENTS

To allow the public, trade and academia a more intuitive understanding of Chinese medicines commonly used in Hong Kong, we showcase 5 themes:

**Radix Rehmanniae** - showing specimens of its origin plant, CMM and decoction pieces;

**Radix Astragali** - showing specimens of its origin plants, CMM, along with the oblique and longitudinal slices;

**Radix Platycodi** - showing specimens of its origin plant, CMM with and without outer bark, along with the transverse and longitudinal slices;

**Cortex Magnoliae Officinalis** - showing specimens of its origin plants, CMM, along with the oblique, transverse and longitudinal slices;

**Radix Paeoniae Rubra** - showing specimens of its origin plants, CMM, along with the oblique, transverse and longitudinal slices.



原植物標本  
Origin Plant Specimen



EXHIBITION ON  
**Radix Rehmanniae**

地黃  
Radix Rehmanniae



熟地黃  
Radix Rehmanniae  
Praeparata

地黃壓片  
Pressed Radix  
Rehmanniae



熟地黃壓片  
Pressed Radix Rehman-  
niae Praeparata



地黃縱切片  
Longitudinal slices of  
Radix Rehmanniae

熟地黃縱切片  
Longitudinal slices of  
Radix Rehmanniae  
Praeparata



原植物標本  
Origin Plant Specimen



EXHIBITION ON  
**Radix Platycodi**

桔梗縱切片  
Longitudinal slices of  
Radix Platycodi



桔梗(去皮)  
Radix Platycodi without  
outer bark



EXHIBITION ON  
**Radix Astragali**



原植物標本  
Origin Plant Specimen



黃芪縱切片  
Longitudinal slices  
of Radix Astragali

黃芪  
Radix Astragali

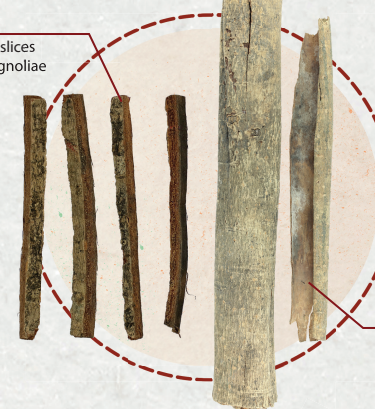


原植物標本  
Origin Plant Specimen



EXHIBITION ON  
**Cortex Magnoliae  
Officinalis**

厚樸縱切片  
Longitudinal slices  
of Cortex Magnoliae  
Officinalis



厚樸  
Cortex Magnoliae  
Officinalis



EXHIBITION ON  
**Radix Paeoniae  
Rubra**



原植物標本  
Origin Plant Specimen



赤芍縱切片  
Longitudinal slices of  
Radix Paeoniae Rubra

赤芍  
Radix Paeoniae  
Rubra